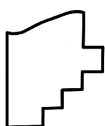
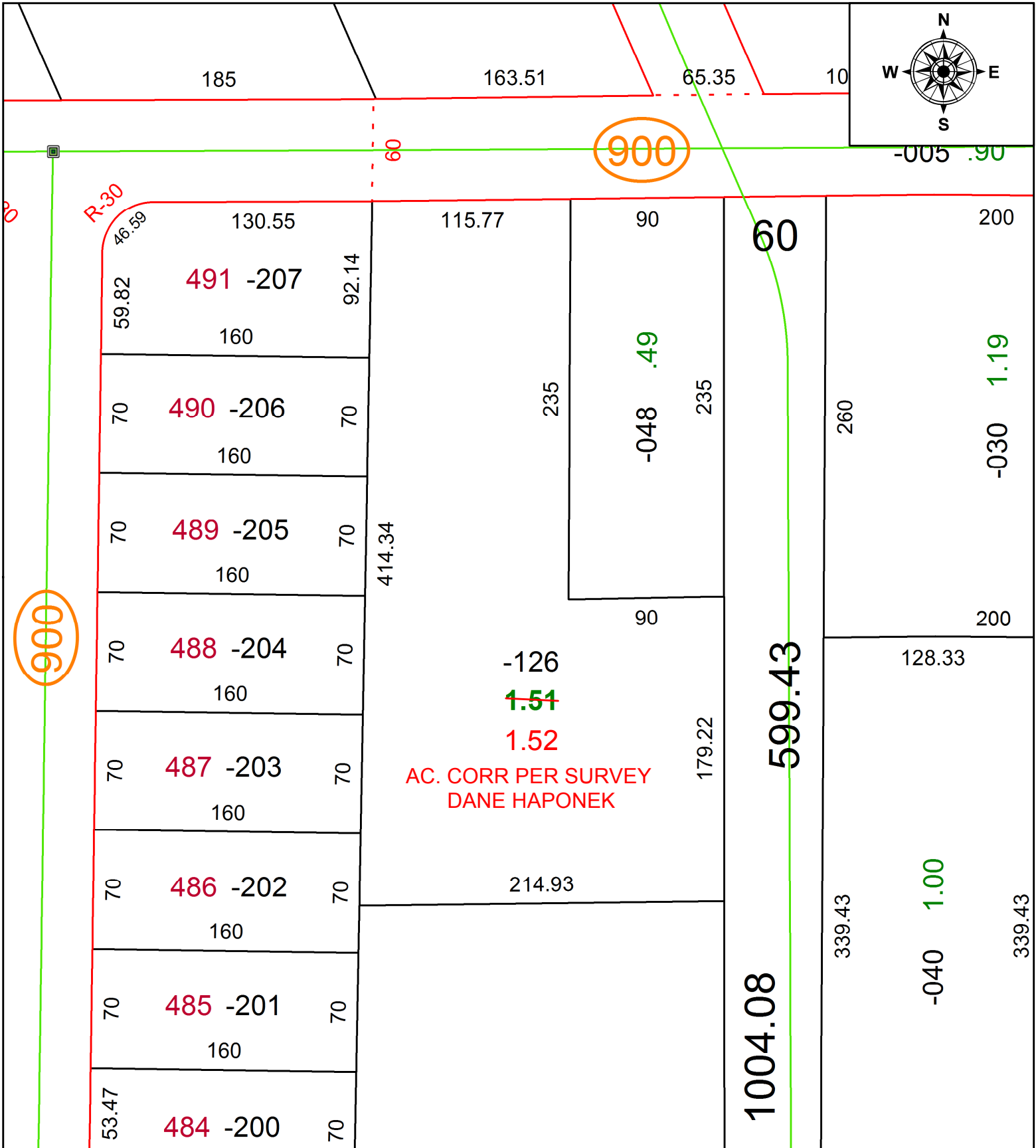


PARENT PARCEL: 07-00-035-102-126

CHILD PARCEL: _____

STARTING POINT: INTERSECTION OF C/L OF LINE AND SHADY DRIVE

21-04537-A



SPLITS/DEEDS PROCESSED
 LORAIN COUNTY TAX MAP DEPARTMENT
 226 MIDDLE AVE. ELYRIA, OH

SURVEYED BY: DANE A. HAPONEK
 CLOSURE: 1: 506096
 MAP PAGE(S): 07-00-035
 APPROVED BY: AC DATE: 4-29-21
 SCALE: 1" = 75' PRIOR INSTRUMENT: 2008-0277402