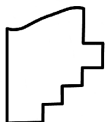
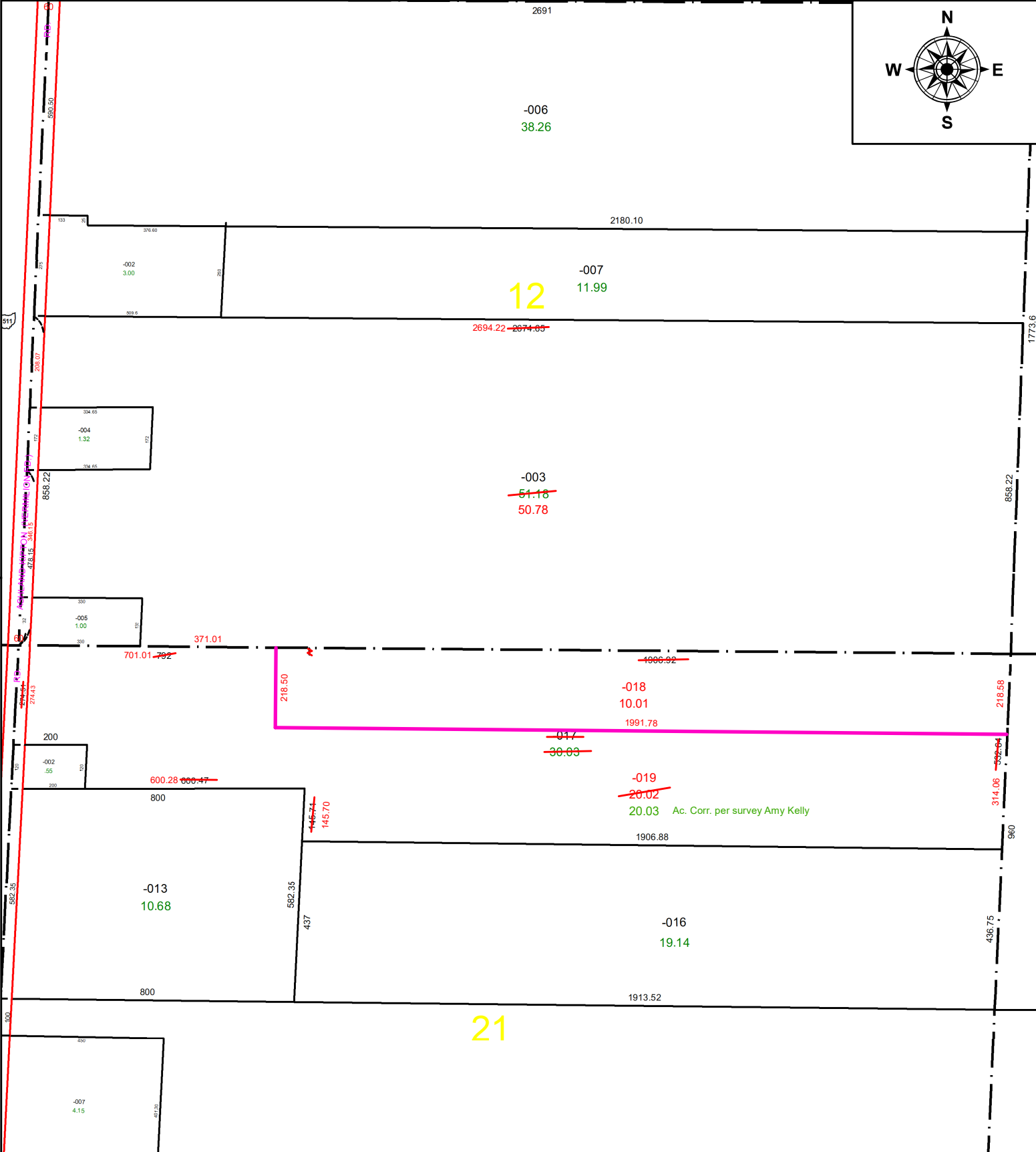


PARENT PARCEL: 13-10-021-000-017 & 13-10-012-000-003

CHILD PARCEL: 13-10-021-000-018 & -019 & 13-10-012-000-003 STR. TRNS.

STARTING POINT: CL OF S.R. 511 & COMMON CORNER CAMDEN TWP. O.L. 12,13, 20 & 21 TRACT 10

22-04532



SPLITS/DEEDS PROCESSED
 LORAIN COUNTY TAX MAP DEPARTMENT
 226 MIDDLE AVE. ELYRIA, OH

SURVEYED BY: AMY KELLY **SURVEY #:** 50655
CLOSURE: 1:519021
MAP PAGE(S): 13-10-021 & 13-10-012
APPROVED BY: DMA **DATE:** 8/1/2022
SCALE: 1" = 350' **PRIOR INSTRUMENT:** 2010-0354607