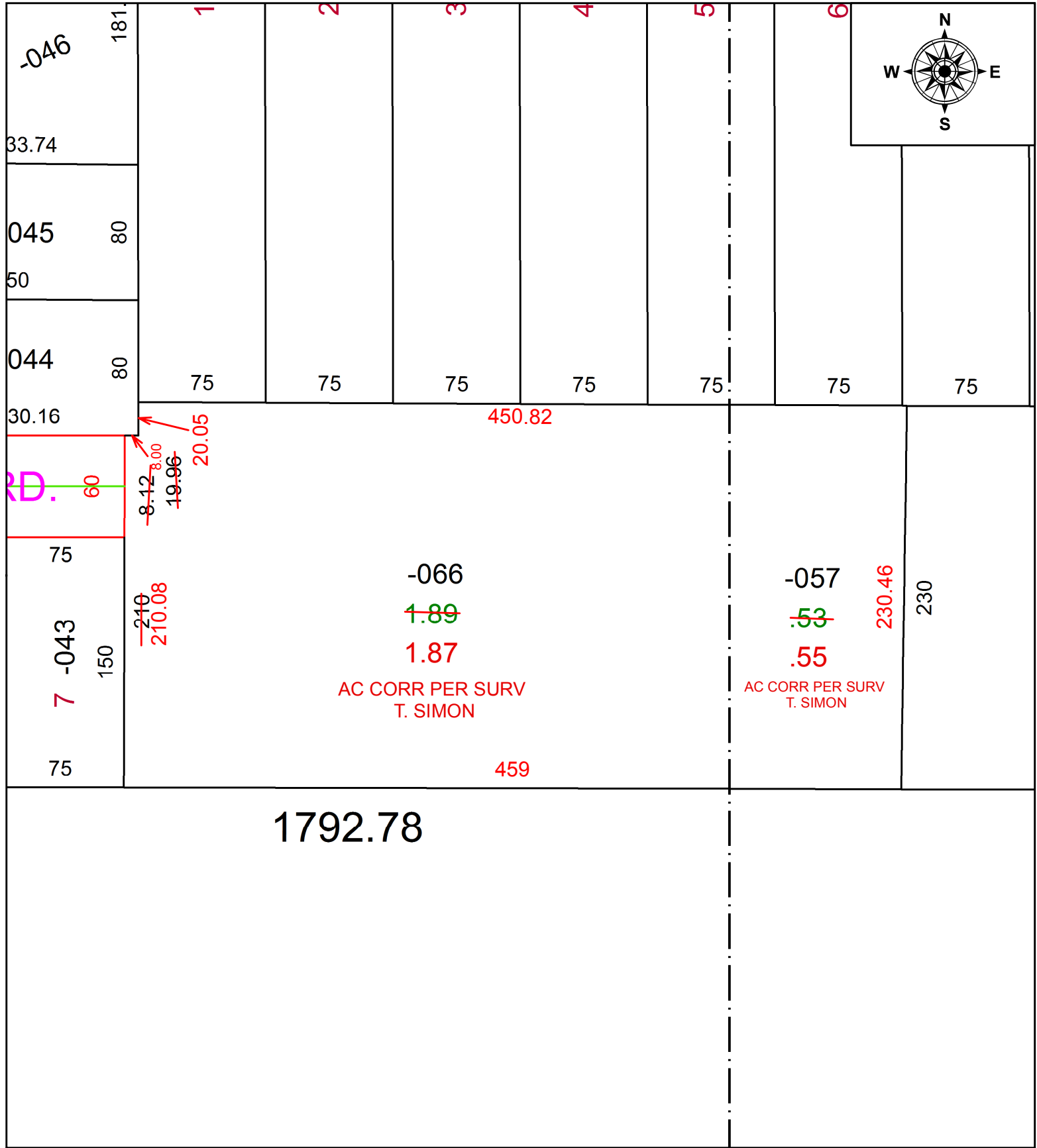


PARENT PARCEL: 11-00-081-102-057, 11-00-100-102-066

CHILD PARCEL: \_\_\_\_\_

STARTING POINT: SOUTHEASTERLY CORNER OF SUBLOT NO. 7 IN THE PINEGROVE SUBDIVISION IN PLAT VOLUME 27 PAGE 21

21-04532-C



**SPLITS/DEEDS PROCESSED**  
 LORAIN COUNTY TAX MAP DEPARTMENT  
 226 MIDDLE AVE. ELYRIA, OH

SURVEYED BY: THOMAS A. SIMON  
 CLOSURE: 1: 357698  
 MAP PAGE(S): 11-00-100  
 APPROVED BY: AC DATE: 4-26-21  
 SCALE: 1" = 75 PRIOR INSTRUMENT: OR 460/929