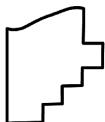
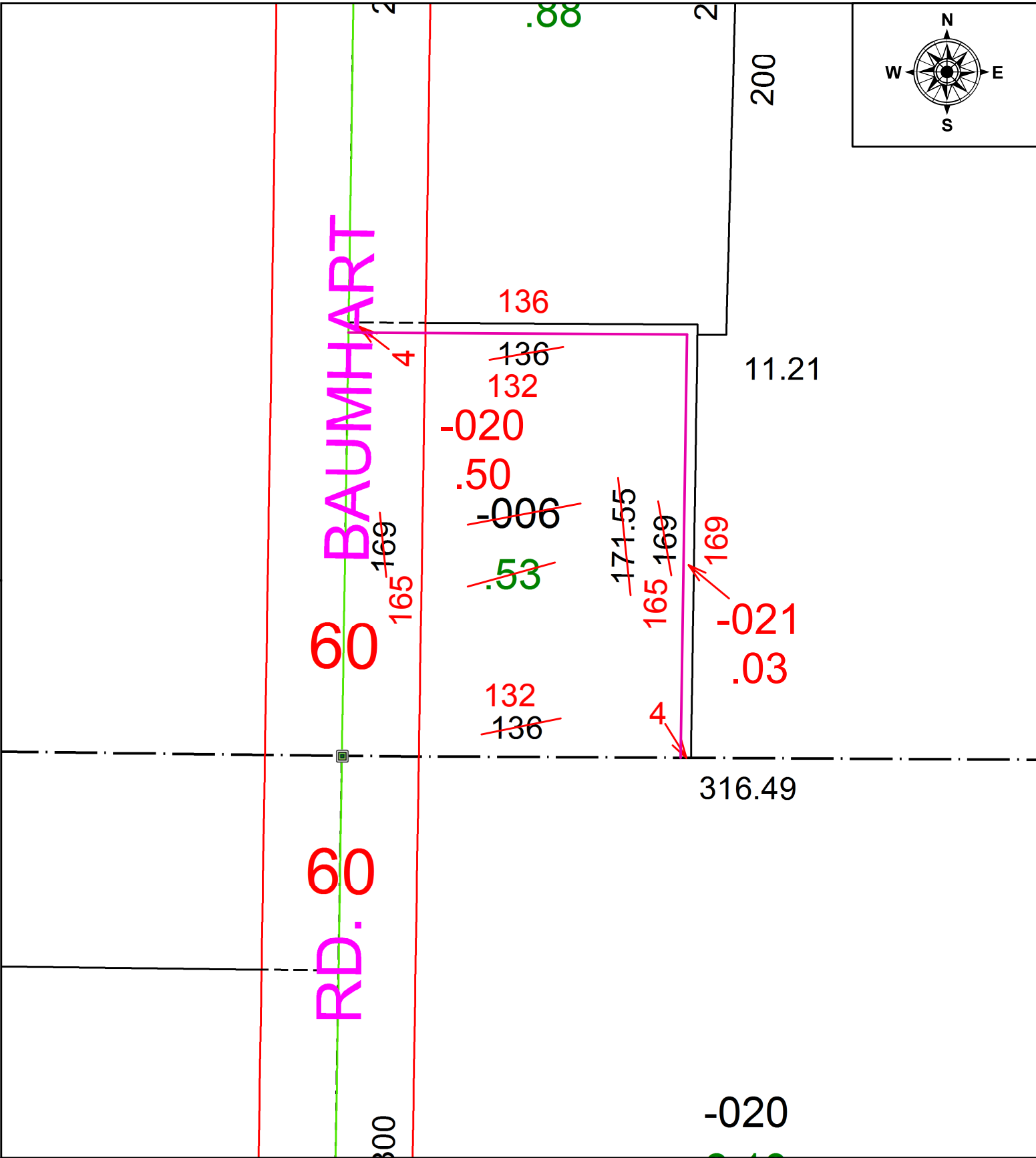
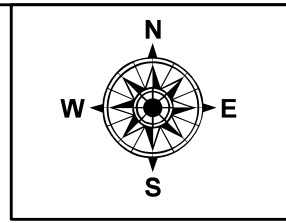


PARENT PARCEL: 08-15-006-000-006

CHILD PARCEL: 08-15-006-000-020, -021

STARTING POINT: INTERSECTION OF SOUTH LINE OF O.L.6 AND C/L OF BAUMHART RD.

21-04529-C



SPLITS/DEEDS PROCESSED
LORAIN COUNTY TAX MAP DEPARTMENT
226 MIDDLE AVE. ELYRIA, OH

SURVEYED BY: _____ N/A
CLOSURE: 1:2147483648
MAP PAGE(S): 8-15-006
APPROVED BY: RRM DATE: 4-22-21
SCALE: 1" = 50 PRIOR INSTRUMENT: 20090290474