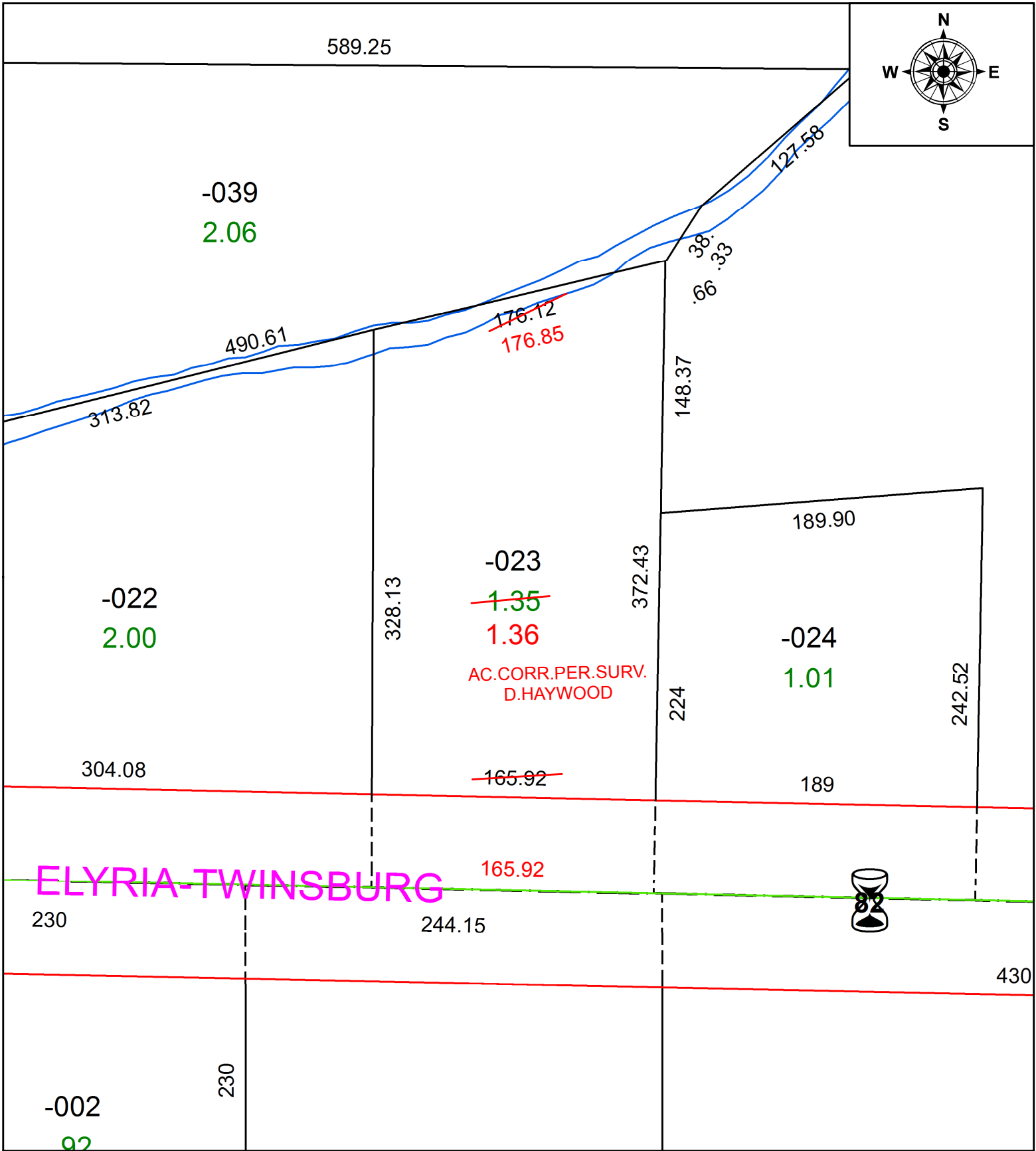


PARENT PARCEL: 11-00-026-000-023

CHILD PARCEL:

STARTING POINT: SOUTHWEST CORNER OF O.L.26

21-04526-D



SPLITS/DEEDS PROCESSED
 LORAIN COUNTY TAX MAP DEPARTMENT
 226 MIDDLE AVE. ELYRIA, OH

SURVEYED BY: DALE R. HAYWOOD

CLOSURE: 1:105,464

MAP PAGE(S): 11-00-026

APPROVED BY: RRM DATE: 4-22-21

SCALE: 1" = 75' PRIOR INSTRUMENT: 20200756320