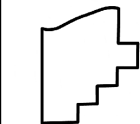
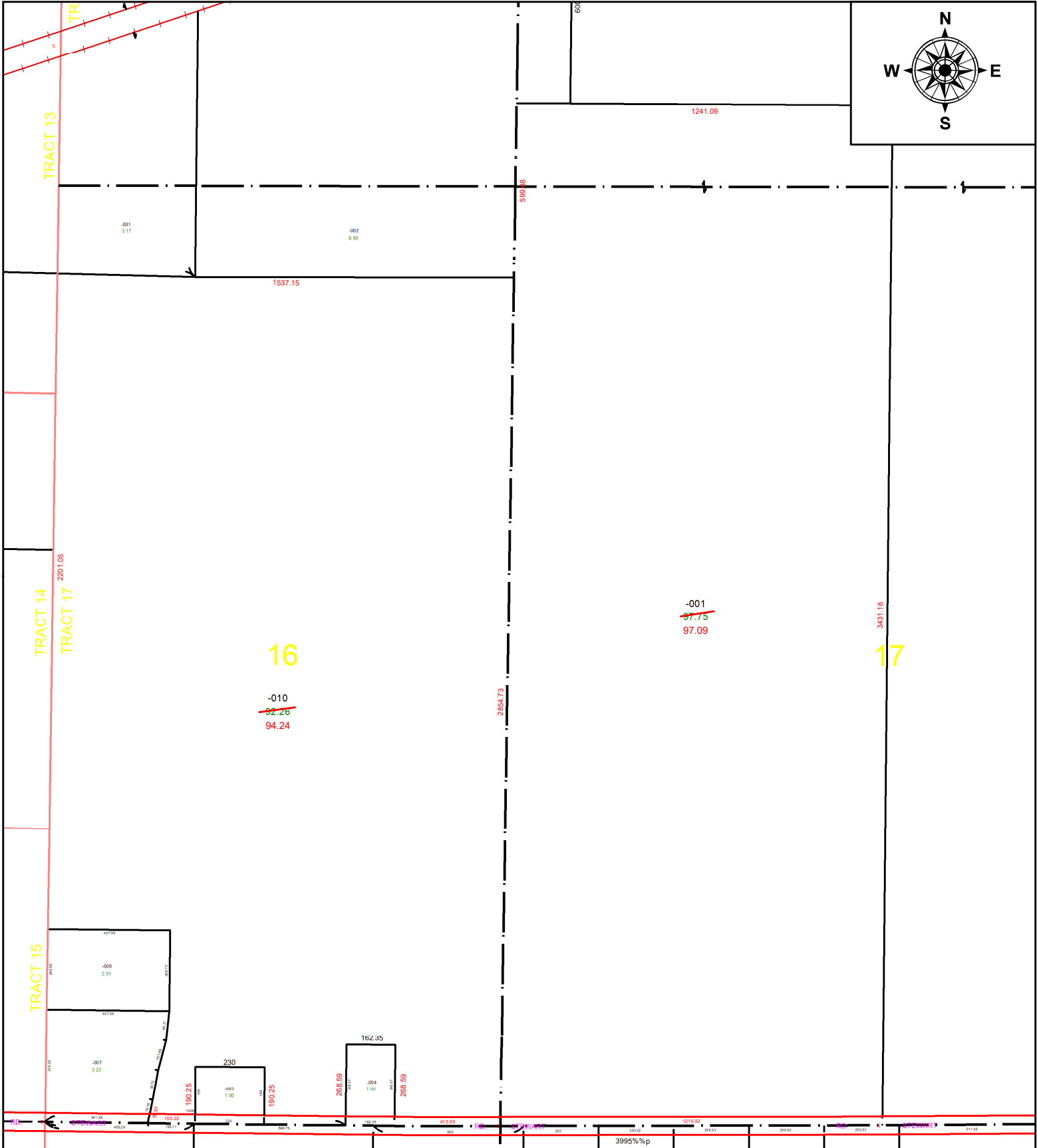


PARENT PARCEL: 21-17-016-000-010 & 21-17-017-000-001

CHILD PARCEL: **AC. CORR. PER SURVEY TIMOTHY HOZALSKI**

STARTING POINT: S.E. CORNER OF O.L. 16

22-04525



**SPLITS/DEEDS PROCESSED**  
 LORAIN COUNTY TAX MAP DEPARTMENT  
 226 MIDDLE AVE. ELYRIA, OH

**SURVEYED BY:** TIMOTHY HOZALSKI  
**CLOSURE:** 1:3506310  
**MAP PAGE(S):** 21-17-016 & 21-17-017  
**APPROVED BY:** DMA **DATE:** 7/13/2022  
**SCALE:** 1" = 425' **PRIOR INSTRUMENT:** 2008-0261031