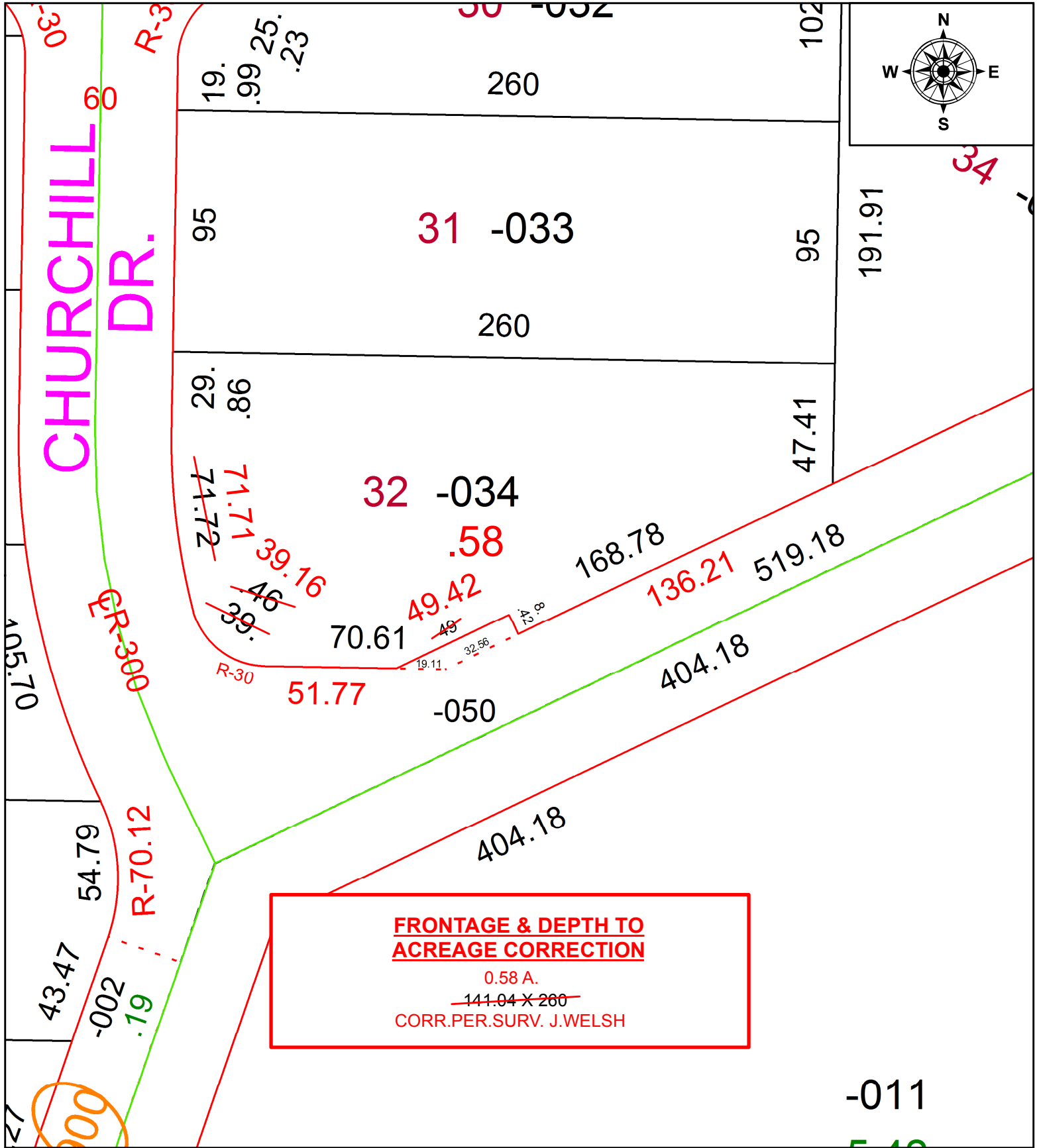


PARENT PARCEL: 12-00-047-102-034

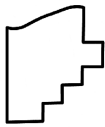
CHILD PARCEL:

21-04523-D

STARTING POINT: SOUTHWEST CORNER OF S/L 34 IN HOMER C. AKINS SUB.



FRONTAGE & DEPTH TO ACREAGE CORRECTION
 0.58 A.
~~141.04 X 260~~
 CORR.PER.SURV. J.WELSH

 **SPLITS/DEEDS PROCESSED**
 LORAIN COUNTY TAX MAP DEPARTMENT
 226 MIDDLE AVE. ELYRIA, OH

SURVEYED BY: JOHN W. WELSH
 CLOSURE: 1: 276,304
 MAP PAGE(S): 12-00-047
 APPROVED BY: RRM DATE: 4-16-21
 SCALE: 1" = 50 PRIOR INSTRUMENT: 20200765950