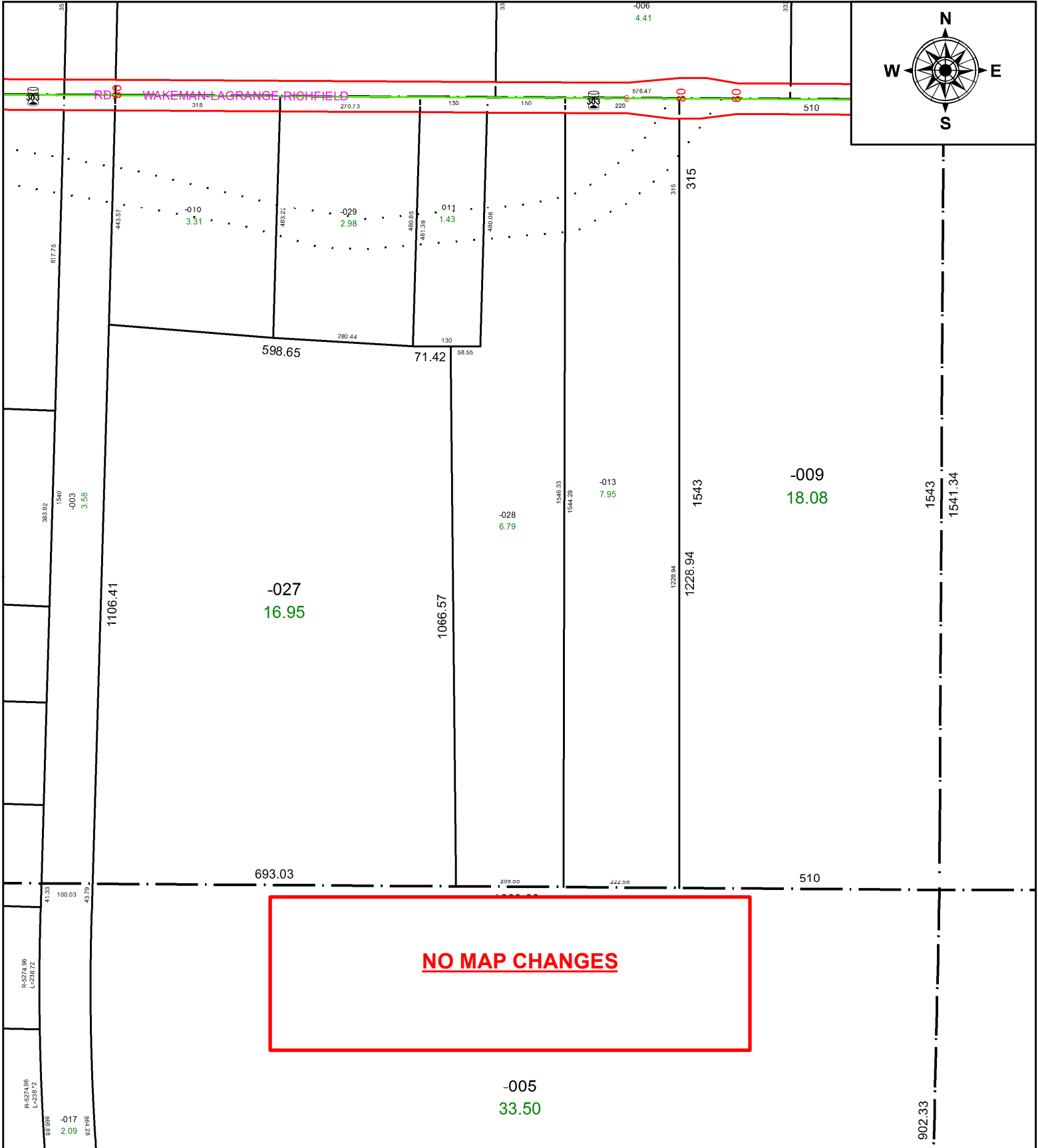


PARENT PARCEL: 14-00-087-000-028

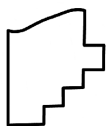
CHILD PARCEL: _____

STARTING POINT: INTERSECTION OF C/L OF PITTS RD. AND C/L OF S.R. 303

21-04522-C



NO MAP CHANGES



SPLITS/DEEDS PROCESSED
LORAIN COUNTY TAX MAP DEPARTMENT
226 MIDDLE AVE. ELYRIA, OH

SURVEYED BY: THOMAS A. SIMON

CLOSURE: 1: 1,869,870

MAP PAGE(S): 14-00-087

APPROVED BY: RRM DATE: 4-16-21

SCALE: 1" = 250 PRIOR INSTRUMENT: OR 1062/151