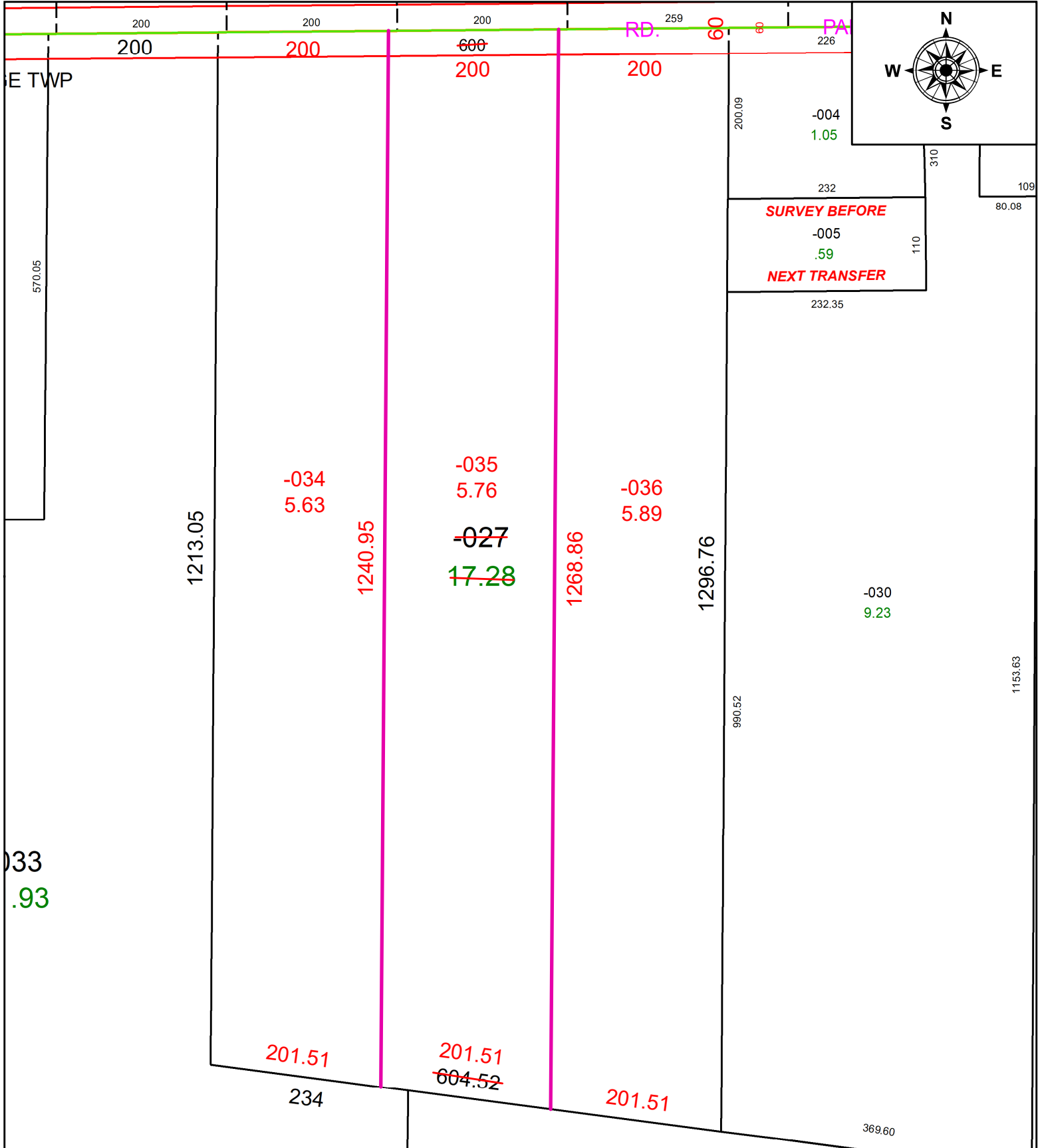


PARENT PARCEL: 15-00-009-000-027

CHILD PARCEL: 15-00-009-000-034, -035, -036

STARTING POINT: C/L OF PARSONS RD AND NW CORNER OF O/L 9

22-04521



SPLITS/DEEDS PROCESSED
 LORAIN COUNTY TAX MAP DEPARTMENT
 226 MIDDLE AVE. ELYRIA, OH

SURVEYED BY: THOMAS A. SIMON
 CLOSURE: 1: 488833
 MAP PAGE(S): 15-00-009
 APPROVED BY: AC DATE: July 06, 2022
 SCALE: 1" = 150 PRIOR INSTRUMENT: 2022- 0869287