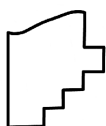
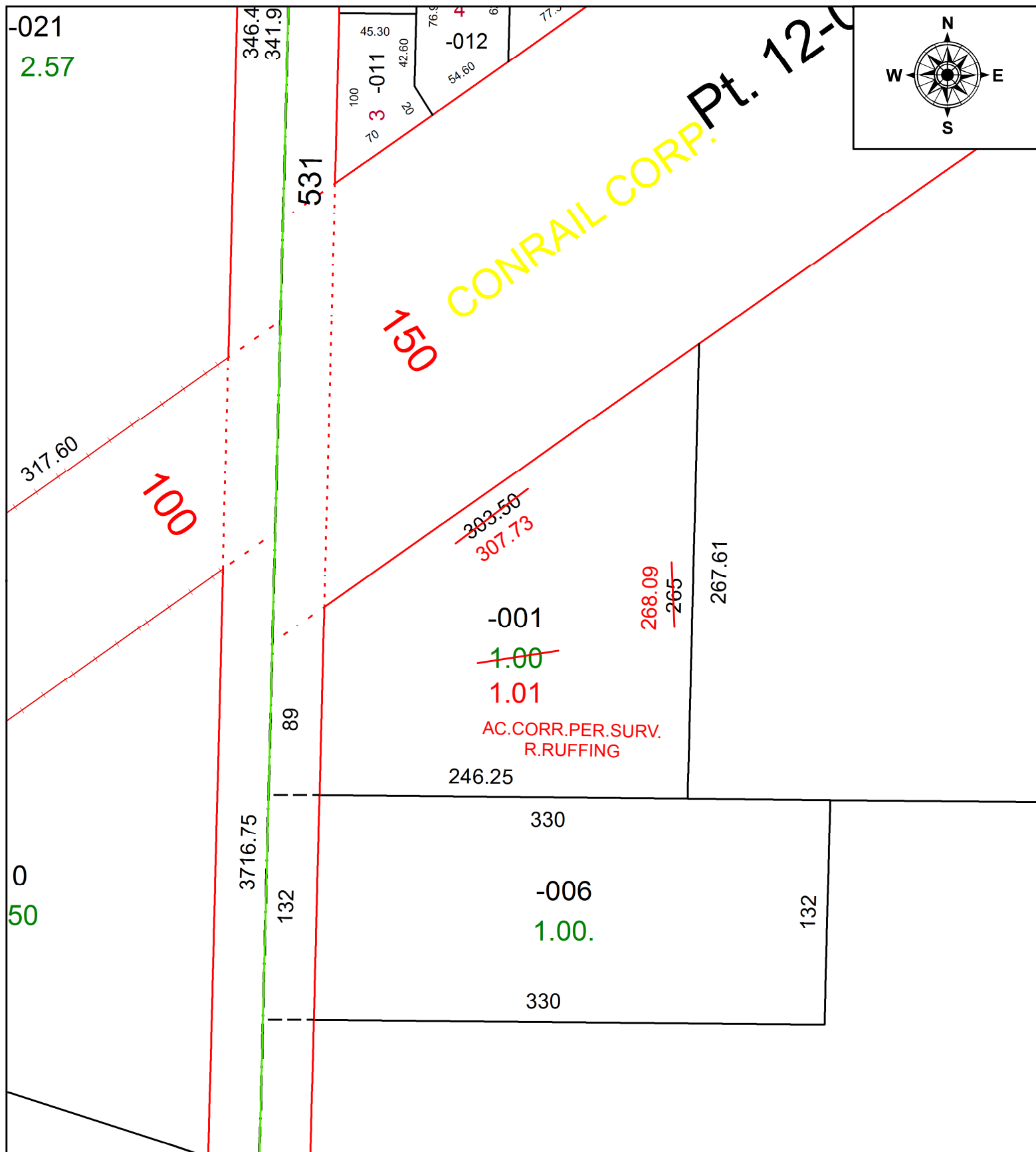


PARENT PARCEL: 12-00-063-102-001

CHILD PARCEL:

STARTING POINT: NORTHWEST CORNER OF O.L.63

21-04519-A



SPLITS/DEEDS PROCESSED
 LORAIN COUNTY TAX MAP DEPARTMENT
 226 MIDDLE AVE. ELYRIA, OH

SURVEYED BY: ROBERT M. RUFFING
CLOSURE: 1: 331,106
MAP PAGE(S): 12-00-063
APPROVED BY: RRM **DATE:** 4-8-21
SCALE: 1" = 75 **PRIOR INSTRUMENT:** 20180694018