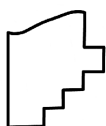
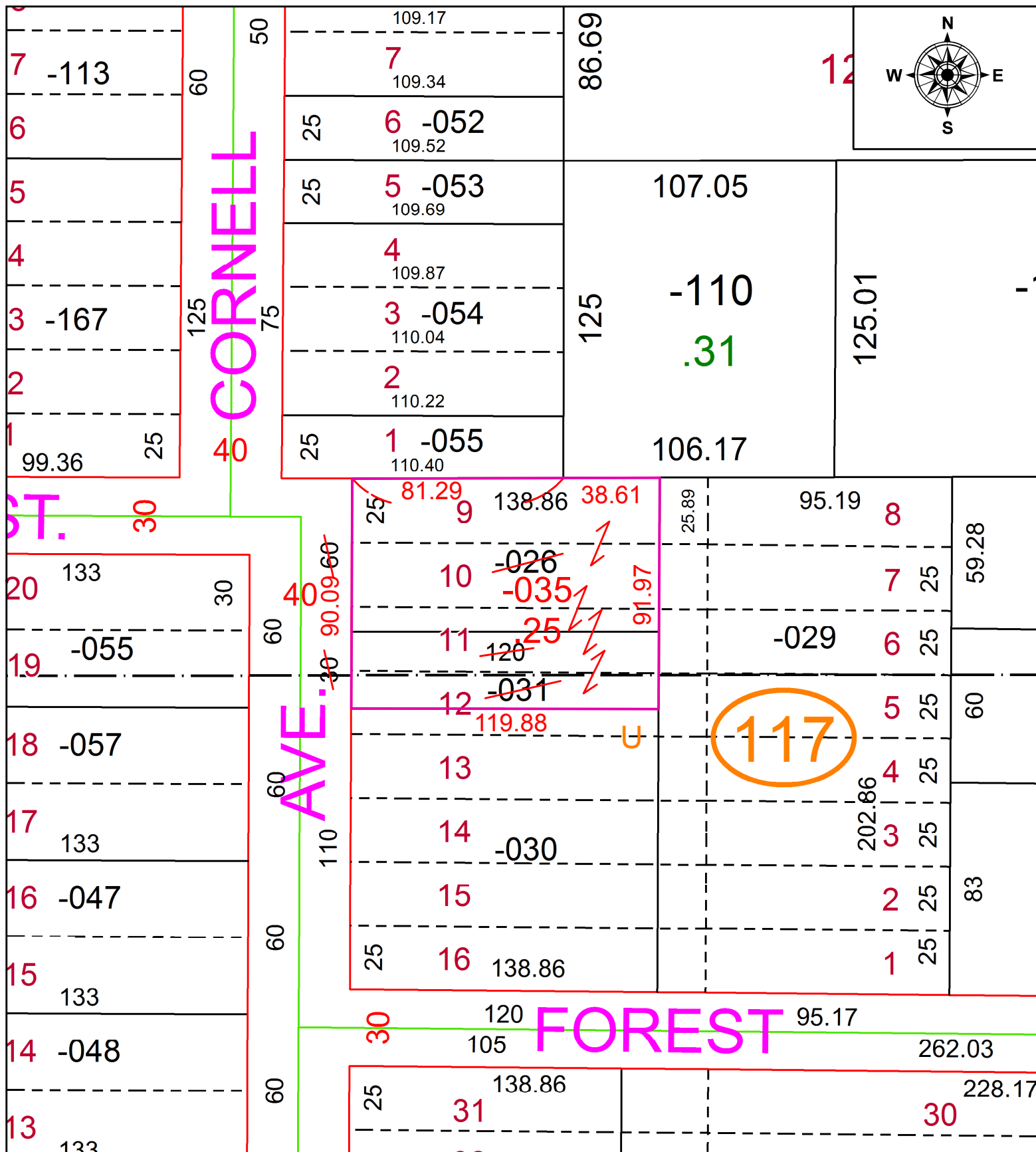


PARENT PARCEL: 07-00-017-117-026, -031

CHILD PARCEL: 07-00-017-117-035

21-04518-C

STARTING POINT: INTERSECTION OF NORTH LINE OF ELM ST. AND EAST LINE OF CORNELL AVE.



**SPLITS/DEEDS PROCESSED**  
 LORAIN COUNTY TAX MAP DEPARTMENT  
 226 MIDDLE AVE. ELYRIA, OH

SURVEYED BY: SCOTT J. CASEY  
 CLOSURE: 1: 79,538  
 MAP PAGE(S): 7-00-017  
 APPROVED BY: RRM DATE: 4-8-21  
 SCALE: 1" = 50 PRIOR INSTRUMENT: 20160602609