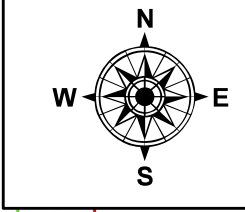
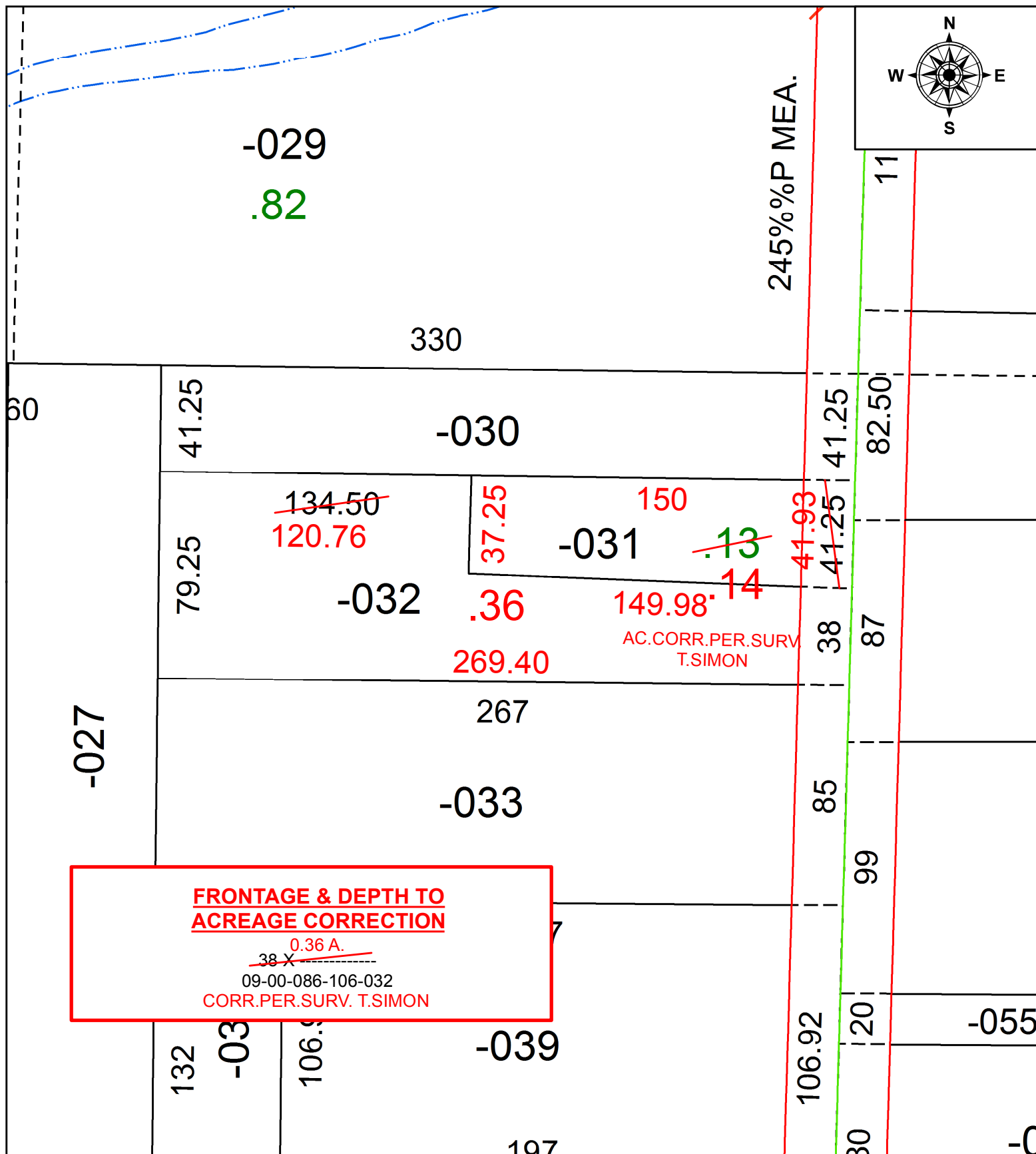


PARENT PARCEL: 09-00-086-106-031, -032

CHILD PARCEL:

STARTING POINT: INTERSECTION OF C/L OF E. VINE ST. AND C/L OF S. PARK ST.

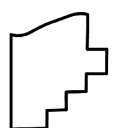
21-04517-D



**FRONTAGE & DEPTH TO
ACREAGE CORRECTION**

~~38 X~~ ^{0.36 A.}

09-00-086-106-032
CORR. PER. SURV. T. SIMON



SPLITS/DEEDS PROCESSED
LORAIN COUNTY TAX MAP DEPARTMENT
226 MIDDLE AVE. ELYRIA, OH

SURVEYED BY: THOMAS A. SIMON
CLOSURE: 1: 260,926
MAP PAGE(S): 9-00-086
APPROVED BY: RRM DATE: 4-6-21
SCALE: 1" = 50' PRIOR INSTRUMENT: 20180676880