

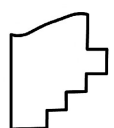
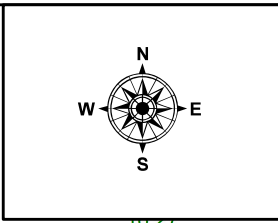
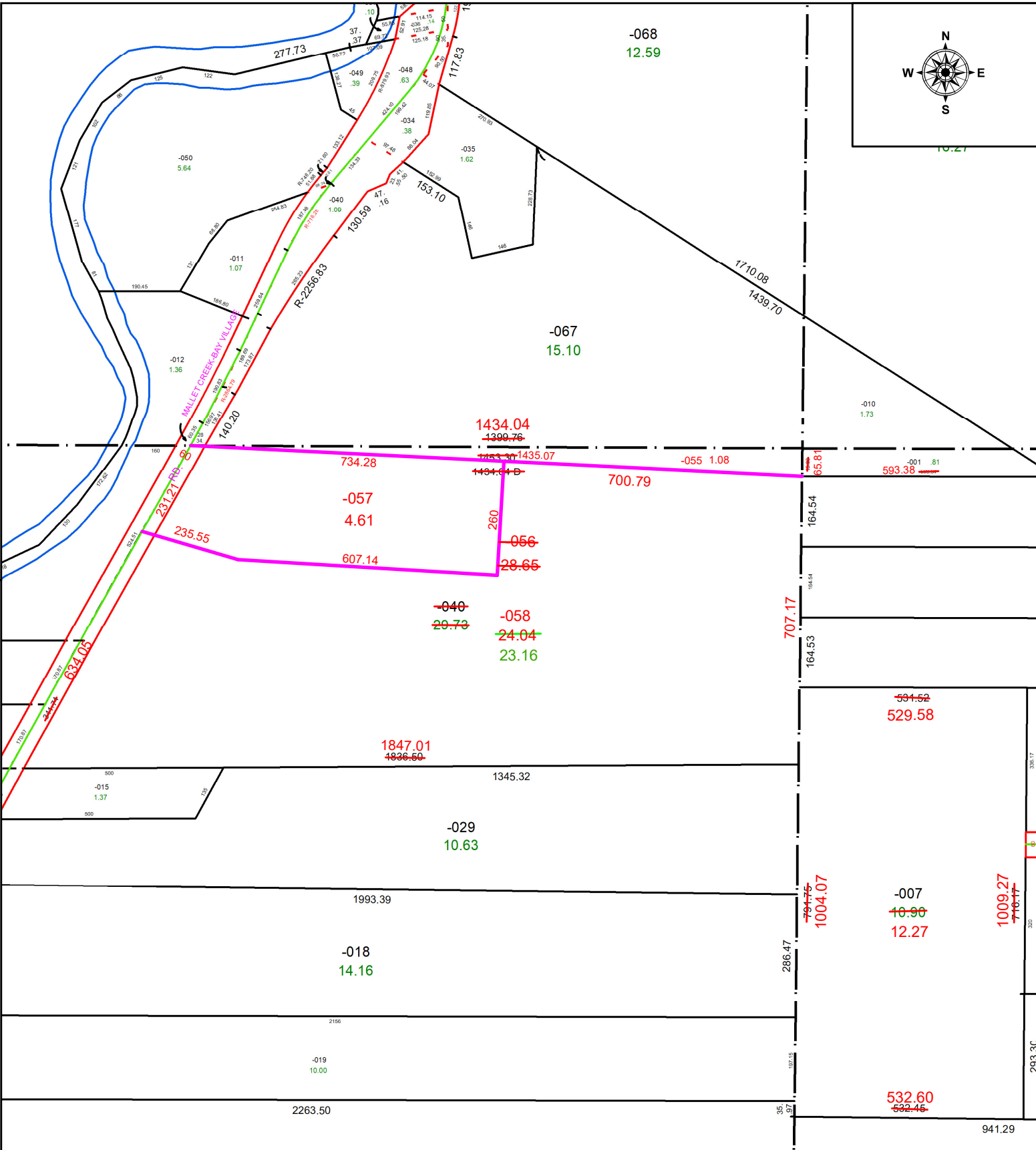
PARENT PARCEL: 12-00-025-000-001, -007, 12-00-036-000-040, 12-00-037-000-067, & 12-00-024-000-010

CHILD PARCEL: 12-00-024-000-010, 12-00-025-000-001, -007, 12-00-036-000-055 THRU -058, 12-00-037-000-067

STARTING POINT: INTERSECTION OF C/L OF EAST RIVER RD & O.L. 37

22-04516

ACREAGE CORRECTION PER SURVEYOR GEORGE HOFFMANN



**SPLITS/DEEDS PROCESSED**  
 LORAIN COUNTY TAX MAP DEPARTMENT  
 226 MIDDLE AVE. ELYRIA, OH

SURVEYED BY: GEORGE HOFFMANN SURVEY # 50622  
 CLOSURE: 1: 738355  
 MAP PAGE(S): 12-00-037, 12-00-036, 12-00-024, 12-00-025  
 APPROVED BY: WRZ DATE: 7/1/2022  
 SCALE: 1" = 300 PRIOR INSTRUMENT: 2004-0037927