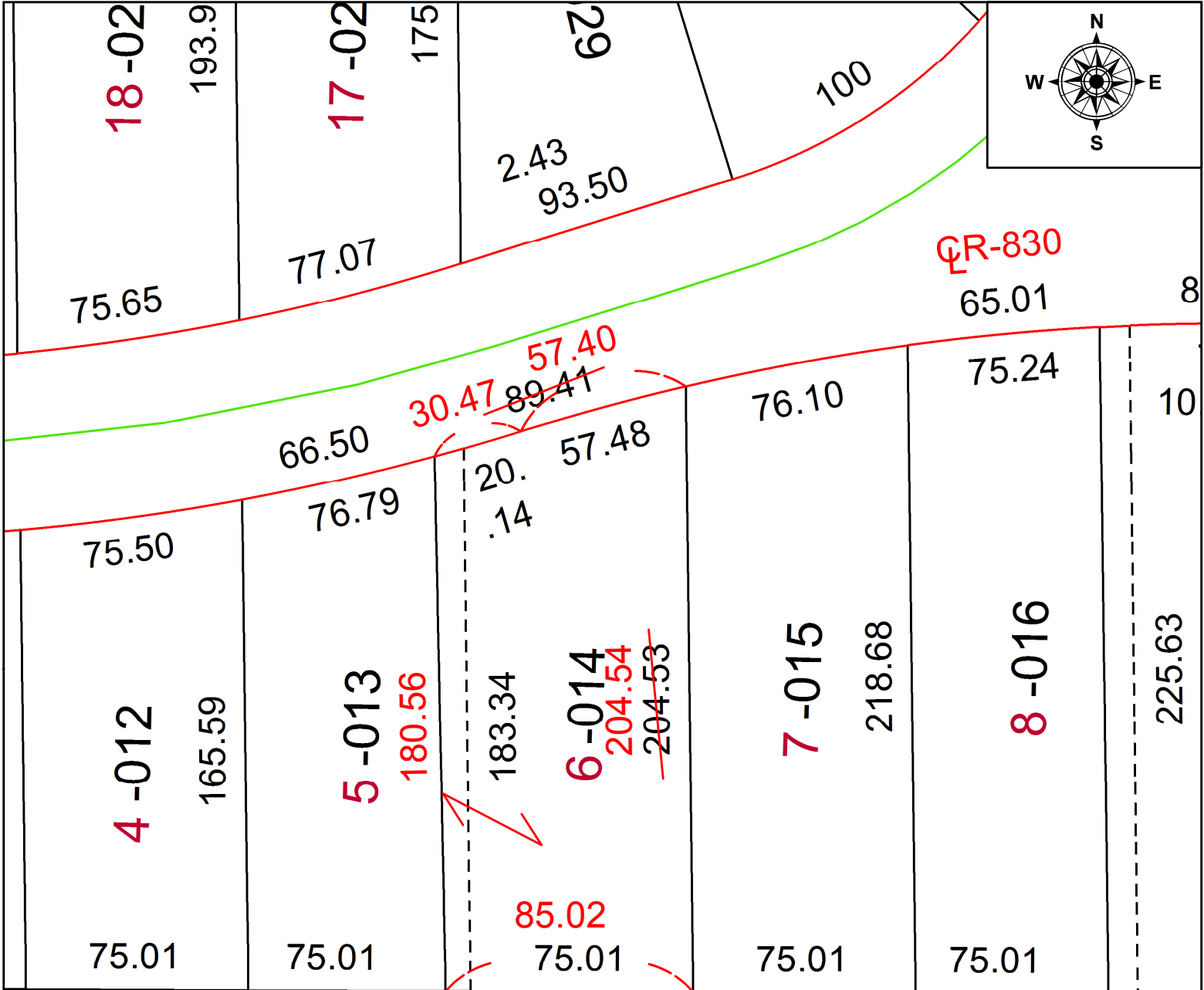


PARENT PARCEL: 16-00-003-105-014

CHILD PARCEL:

STARTING POINT: NORTHEAST CORNER OF S/L 6 IN MYLES KNECHTGES SUB. NO.1

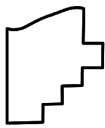
21-04516-D



**FRONTAGE & DEPTH CORRECTION**

87.87 X 204.54  
~~89.41 X 205~~  
 CORR.PER.SURV. W,BARBOSA

6



**SPLITS/DEEDS PROCESSED**  
 LORAIN COUNTY TAX MAP DEPARTMENT  
 226 MIDDLE AVE. ELYRIA, OH

SURVEYED BY: WILFREDO BARBOSA  
 CLOSURE: 1:166,750  
 MAP PAGE(S): 16-00-003  
 APPROVED BY: RRM DATE: 4-6-21  
 SCALE: 1" = 50' PRIOR INSTRUMENT: 20110373989