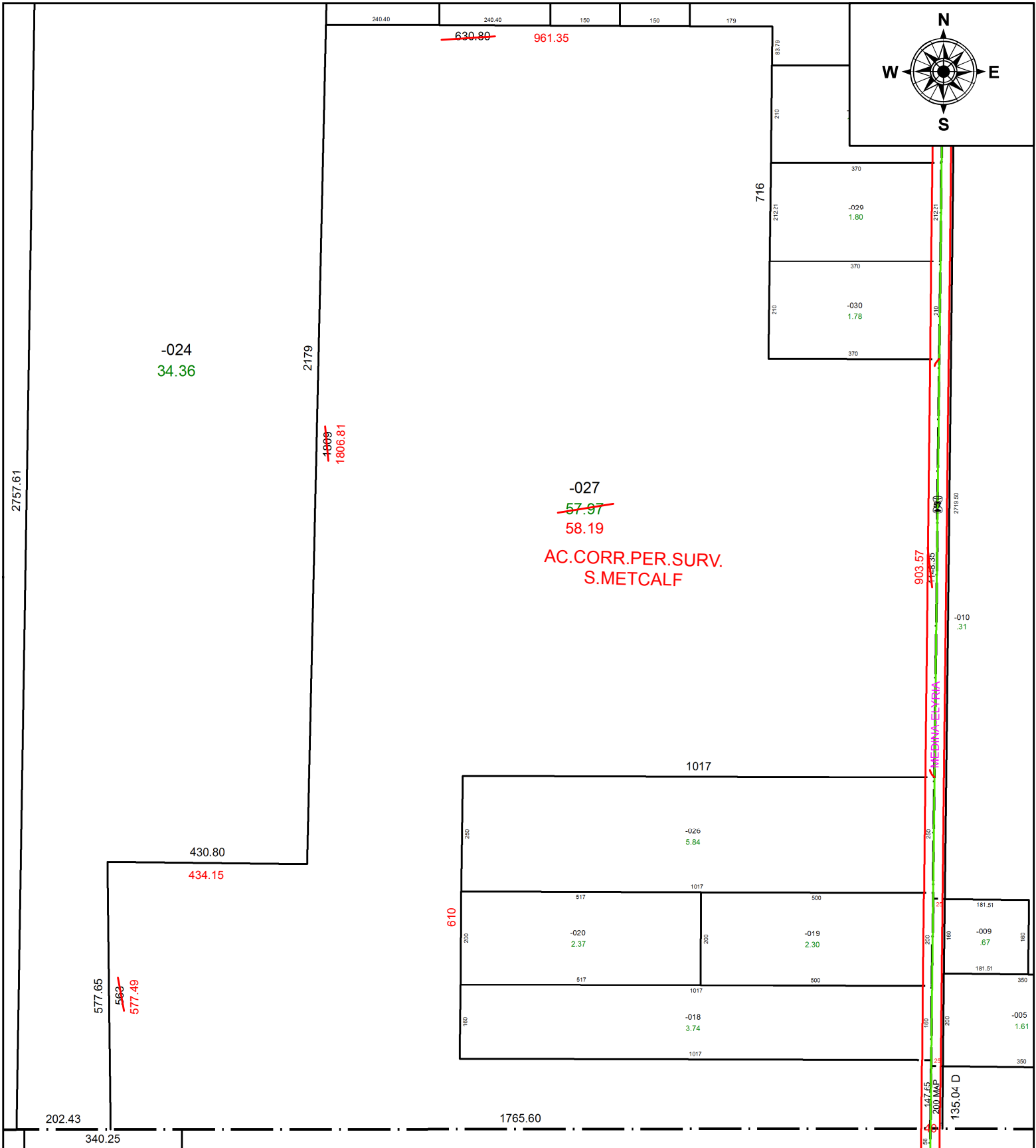


PARENT PARCEL: 16-00-052-000-027

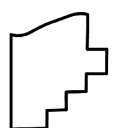
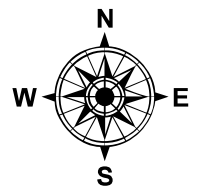
CHILD PARCEL:

STARTING POINT: INTERSECTION OF C/L OF COWLEY RD. AND C/L OF S.R.57

21-04515-D



AC.CORR.PER.SURV.
S.METCALF



SPLITS/DEEDS PROCESSED
 LORAIN COUNTY TAX MAP DEPARTMENT
 226 MIDDLE AVE. ELYRIA, OH

SURVEYED BY: STEVEN J. METCALF
CLOSURE: 1: 2,090,432
MAP PAGE(S): 16-00-052
APPROVED BY: RRM **DATE:** 4-6-21
SCALE: 1" = 275 **PRIOR INSTRUMENT:** 20160576369