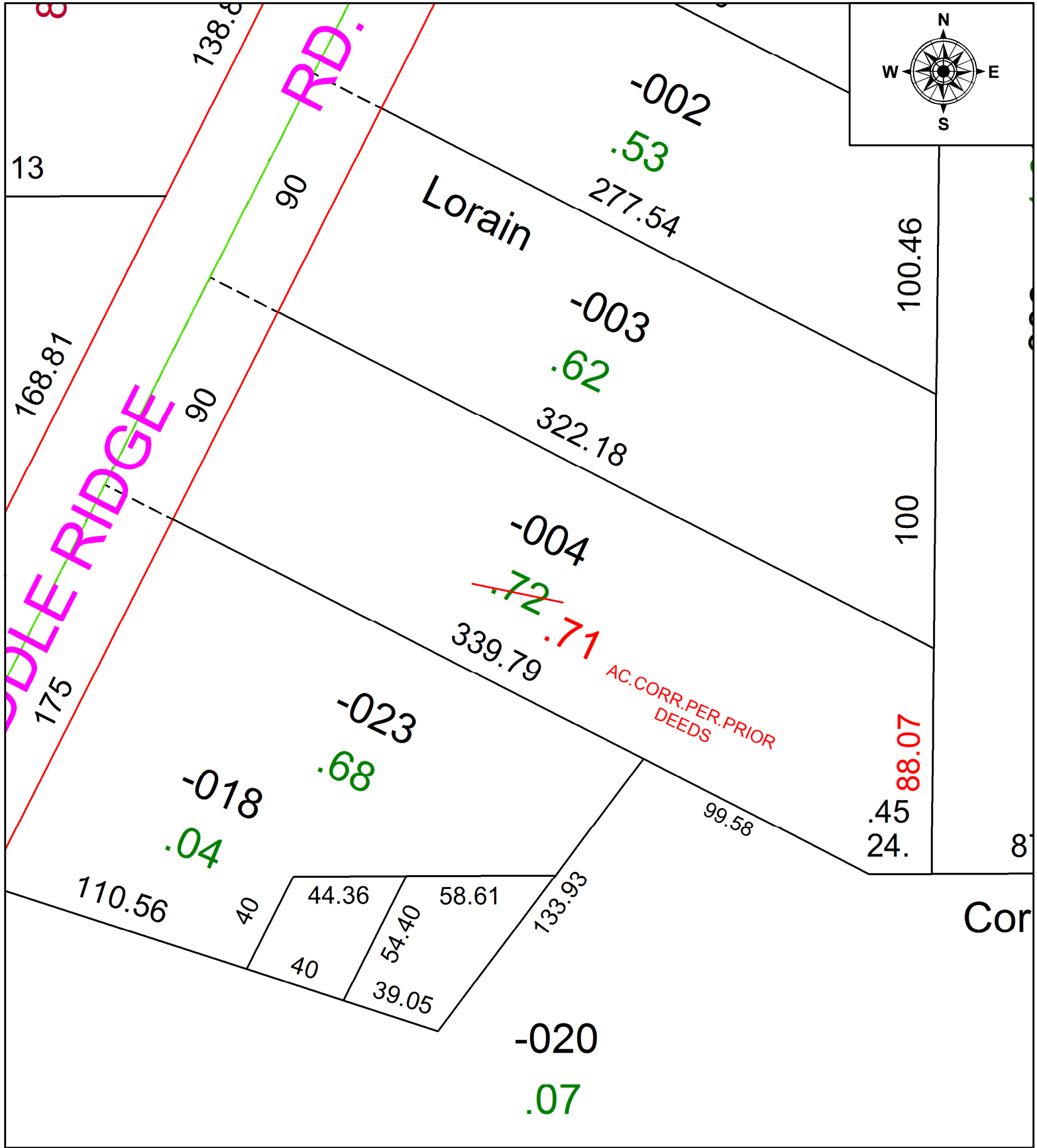


PARENT PARCEL: 06-21-001-102-004

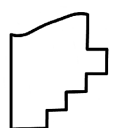
CHILD PARCEL:

STARTING POINT: INTERSECTION OF C/L OF MIDDLE RIDGE RD. AND C/L OF COOPER FOSTER PARK RD.

21-04511-C



AC. CORR. PER. PRIOR DEEDS



**SPLITS/DEEDS PROCESSED**  
LORAIN COUNTY TAX MAP DEPARTMENT  
226 MIDDLE AVE. ELYRIA, OH

SURVEYED BY:	N/A
CLOSURE:	N/A
MAP PAGE(S):	6-21-001
APPROVED BY:	RRM DATE: 3-31-21
SCALE:	1" = 50
PRIOR INSTRUMENT:	20030886622