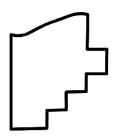
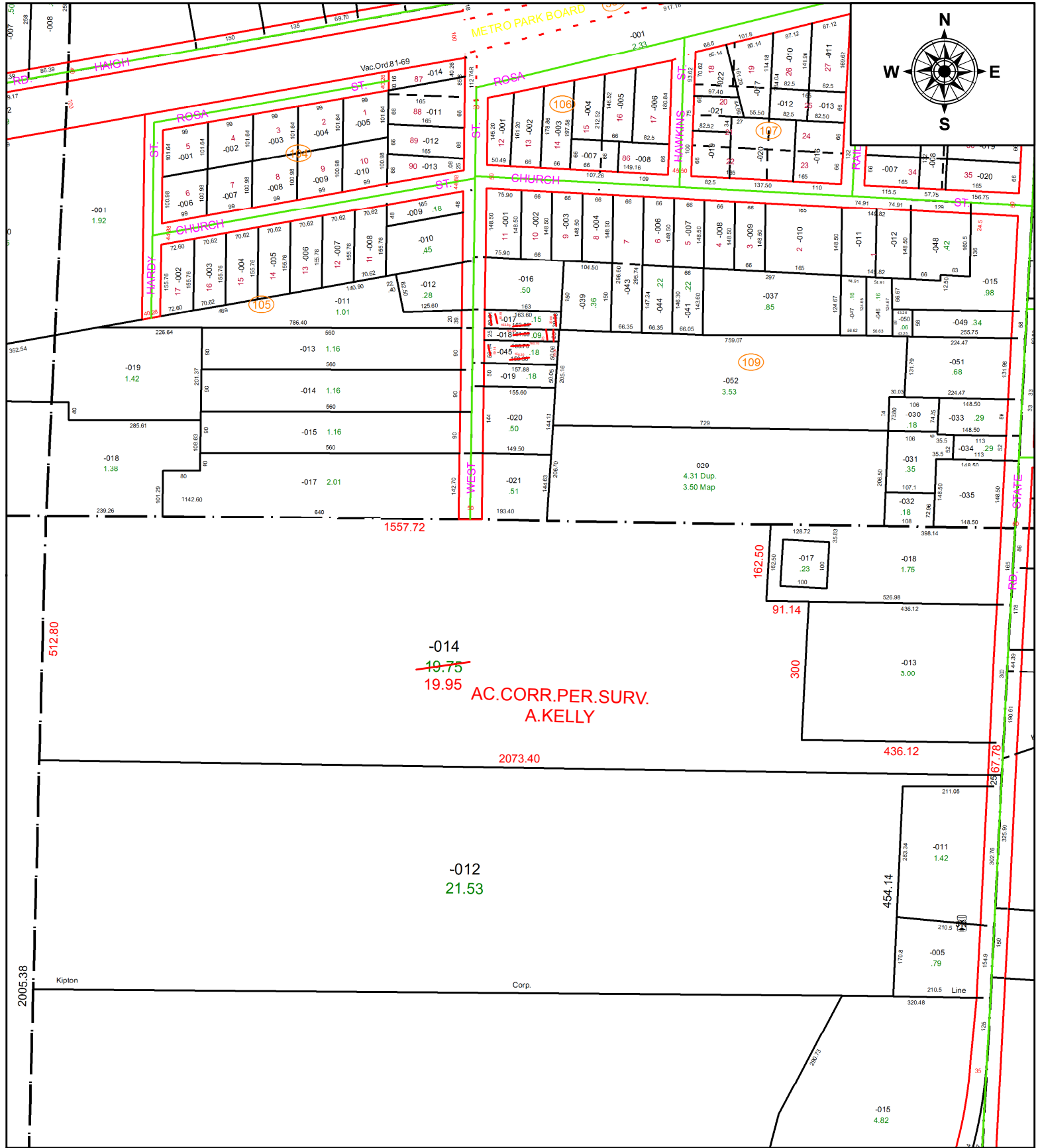


PARENT PARCEL: 13-11-025-000-014  
CHILD PARCEL:  
STARTING POINT: NORTHWEST CORNER OF O.L.26

21-04510-D



**SPLITS/DEEDS PROCESSED**  
LORAIN COUNTY TAX MAP DEPARTMENT  
226 MIDDLE AVE. ELYRIA, OH

SURVEYED BY: AMY M. KELLY  
CLOSURE: 1: 980,663  
MAP PAGE(S): 13-11-025  
APPROVED BY: RRM DATE: 3-29-21  
SCALE: 1" = 275 PRIOR INSTRUMENT: 20140528456