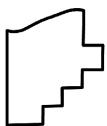
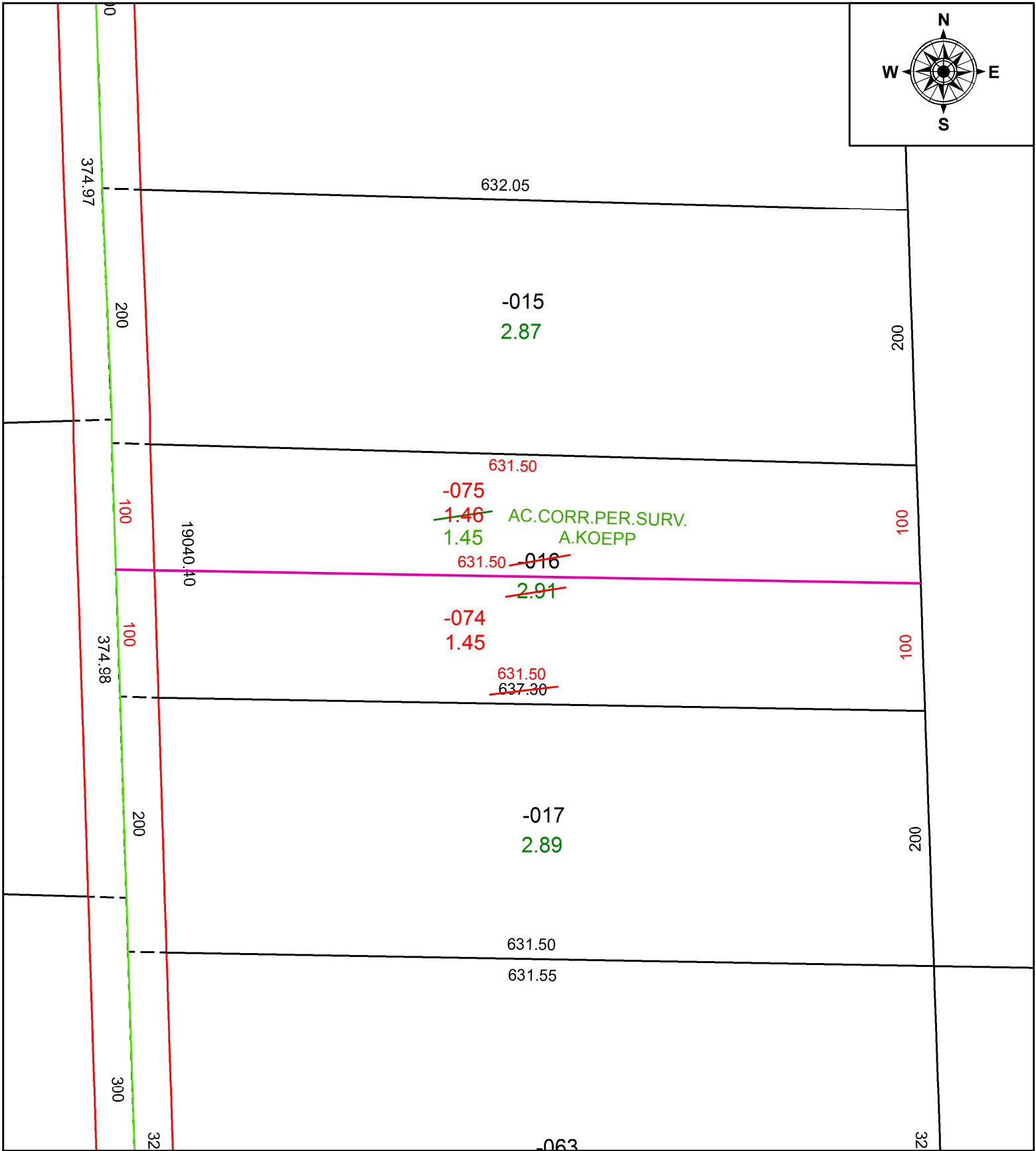


PARENT PARCEL: 08-00-091-000-016

CHILD PARCEL: 08-00-091-000-074, -075

STARTING POINT: NORTHWEST CORNER OF LAND CONVEYED TO ELIZABETH ANN LARSEN (DV 552/534)

21-04509-U



SPLITS/DEEDS PROCESSED
 LORAIN COUNTY TAX MAP DEPARTMENT
 226 MIDDLE AVE. ELYRIA, OH

SURVEYED BY: ARNOLD F. KOEPP

CLOSURE: 1 : INF.

MAP PAGE(S): 8-00-091

APPROVED BY: RRM DATE: 3-29-21

SCALE: 1" = 100 PRIOR INSTRUMENT: 20190727817