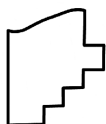
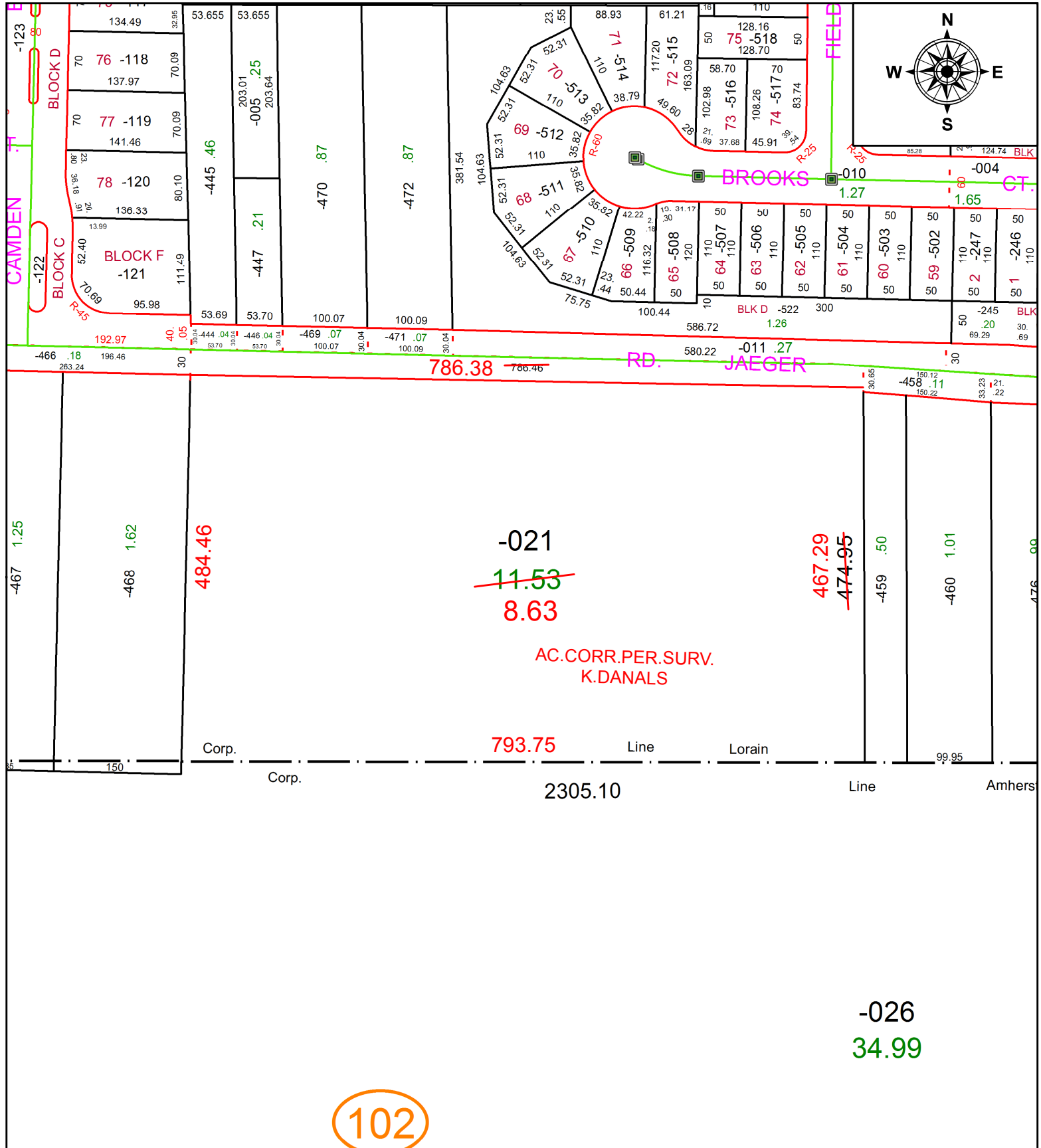


PARENT PARCEL: 02-02-010-000-021

CHILD PARCEL:

STARTING POINT: INTERSECTION OF JAEGER RD. AND WEST LINE OF O.L.10 TR. 2

21-04507-D



SPLITS/DEEDS PROCESSED
 LORAIN COUNTY TAX MAP DEPARTMENT
 226 MIDDLE AVE. ELYRIA, OH

SURVEYED BY: KYLE R. DANALS
CLOSURE: 1: 280,411
MAP PAGE(S): 2-02-010
APPROVED BY: RRM **DATE:** 3-25-21
SCALE: 1" = 150 **PRIOR INSTRUMENT:** 20210797475