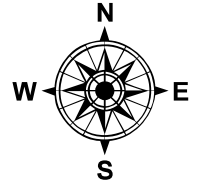
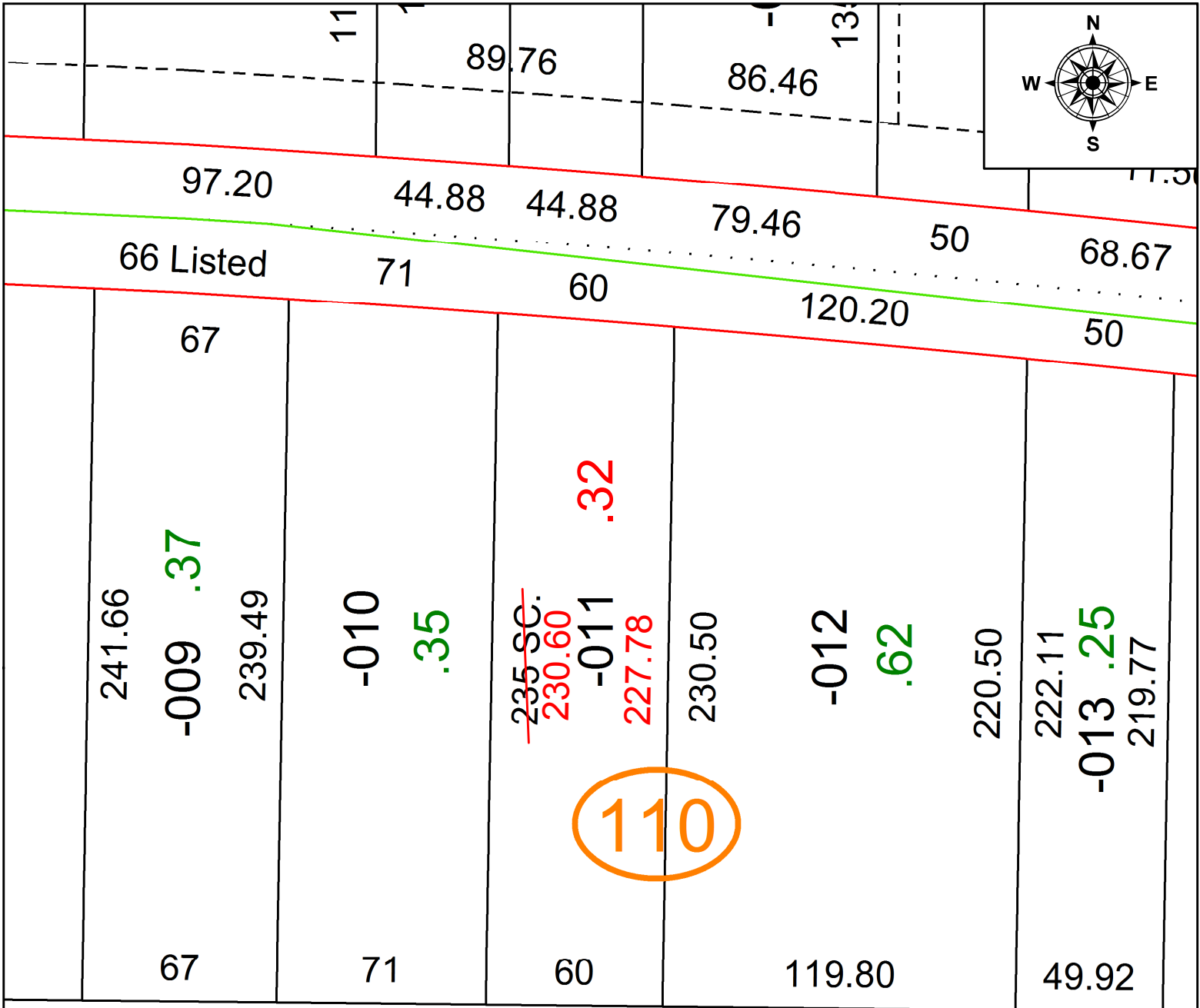


PARENT PARCEL: 09-00-096-110-011

CHILD PARCEL:

21-04505-D

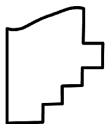
STARTING POINT: INTERSECTION OF C/L OF S.PARK ST. AND C/L OF GRAFTON ST.



**FRONTAGE & DEPTH TO
ACREAGE CORRECTION**

0.32 A.
~~60 X~~

CORR.PER.SURV.W.WALLACE



SPLITS/DEEDS PROCESSED
LORAIN COUNTY TAX MAP DEPARTMENT
226 MIDDLE AVE. ELYRIA, OH

SURVEYED BY: WILLIAM R. WALLACE
 CLOSURE: 1; 1,298,867
 MAP PAGE(S): 9-00-096
 APPROVED BY: RRM DATE: 3-25-21
 SCALE: 1" = 50 PRIOR INSTRUMENT: 20200776042