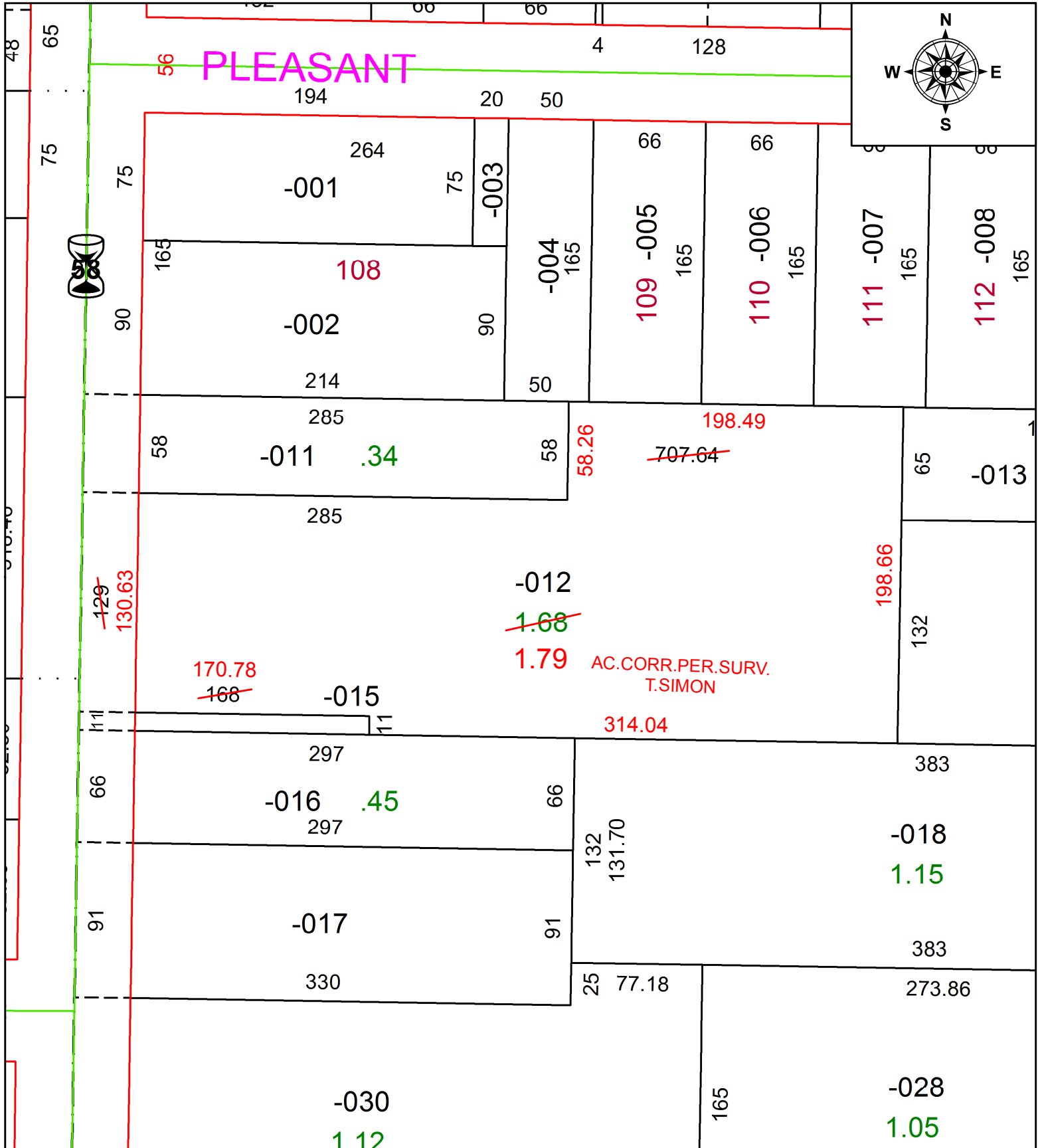


PARENT PARCEL: 18-00-022-114-012

CHILD PARCEL:

STARTING POINT: INTERSECTION OF C/L OF S. MAIN ST. AND C/L OF 4TH ST.

21-04498-C



**SPLITS/DEEDS PROCESSED**  
 LORAIN COUNTY TAX MAP DEPARTMENT  
 226 MIDDLE AVE. ELYRIA, OH

SURVEYED BY: THOMAS A. SIMON  
 CLOSURE: 1:248,882  
 MAP PAGE(S): 18-00-022  
 APPROVED BY: RRM DATE: 3-3-21  
 SCALE: 1" = 75' PRIOR INSTRUMENT: DV 793/392