

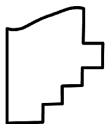
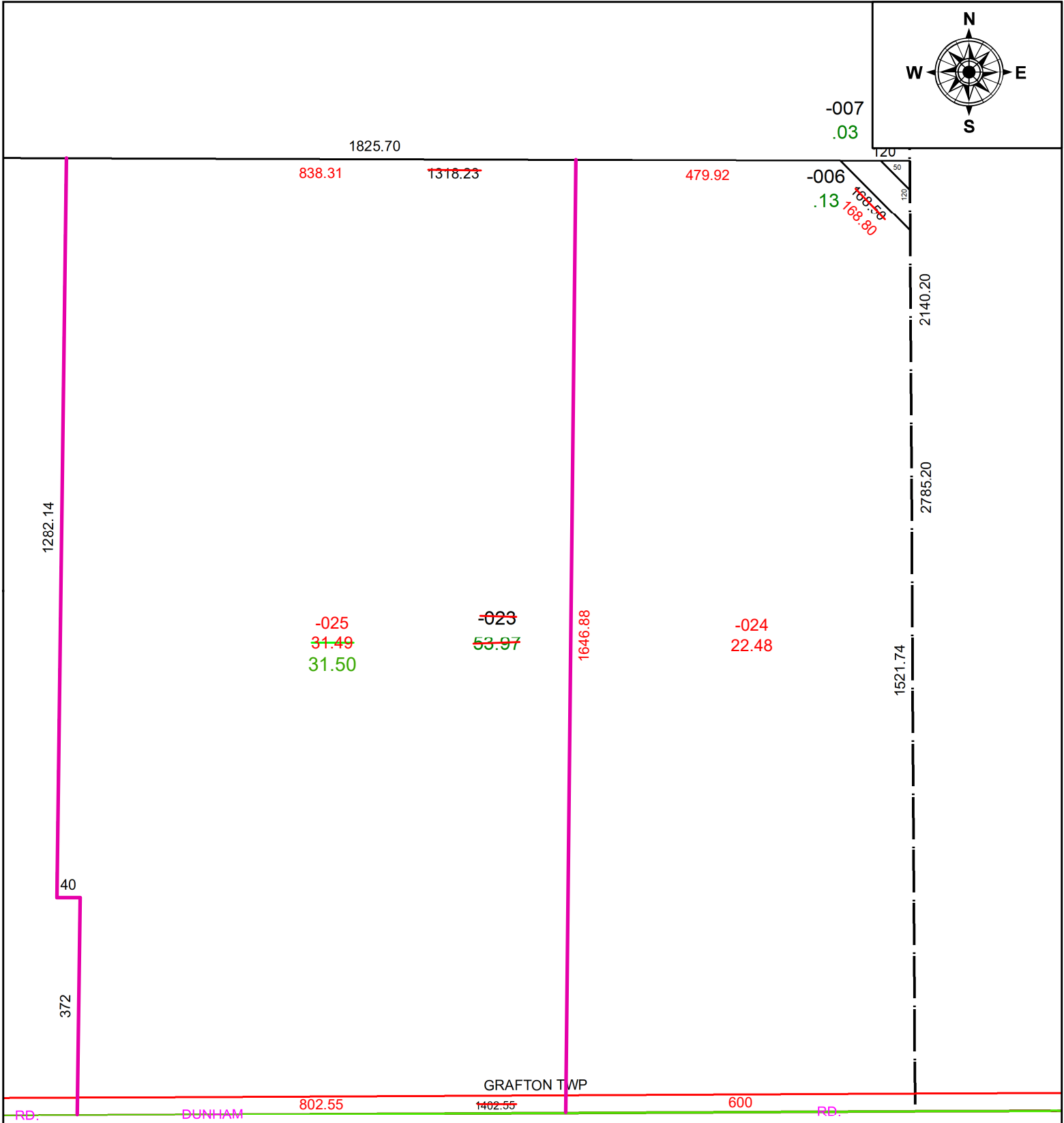
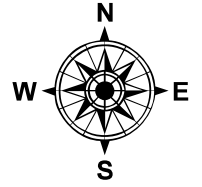
PARENT PARCEL: 16-00-094-000-023

CHILD PARCEL: 16-00-094-000-024 & -025

STARTING POINT: SE CORNER OF O/L 93

AC CORR PER SURV BY AMY M. KELLY

22-04492



SPLITS/DEEDS PROCESSED
 LORAIN COUNTY TAX MAP DEPARTMENT
 226 MIDDLE AVE. ELYRIA, OH

SURVEYED BY: AMY M. KELLY
 CLOSURE: 1: 6453057
 MAP PAGE(S): 16-00-094-B
 APPROVED BY: AC DATE: 6/3/2022
 SCALE: 1" = 225 PRIOR INSTRUMENT: 2017- 0655257