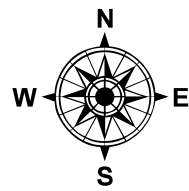
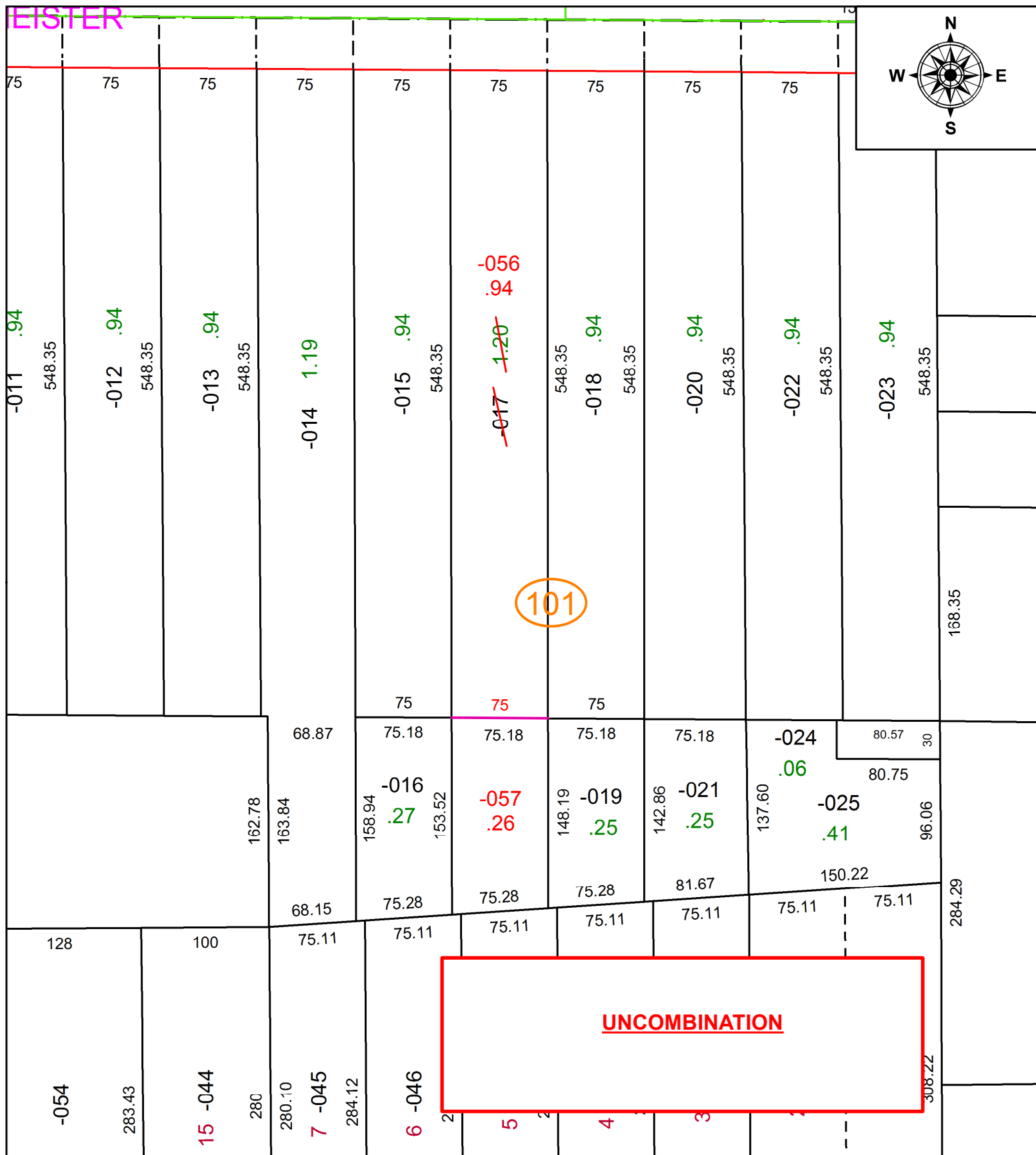


PARENT PARCEL: 02-02-013-101-017

CHILD PARCEL: 02-02-013-101-056, -057

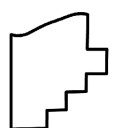
STARTING POINT: INTERSECTION OF C/L OF LEAVITT RD. AND C/L OF MEISTER RD.

21-04491-U



101

UNCOMBINATION



SPLITS/DEEDS PROCESSED
 LORAIN COUNTY TAX MAP DEPARTMENT
 226 MIDDLE AVE. ELYRIA, OH

SURVEYED BY: RAY E. HOLLIS
 CLOSURE: 1: 4,638
 MAP PAGE(S): 2-02-013
 APPROVED BY: RRM DATE: 2-18-21
 SCALE: 1" = 100 PRIOR INSTRUMENT: OR 742/847