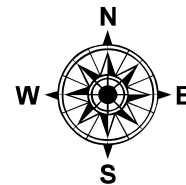


PARENT PARCEL: 09-00-096-108-016, -017, -021

CHILD PARCEL:

21-04486-C

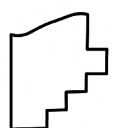
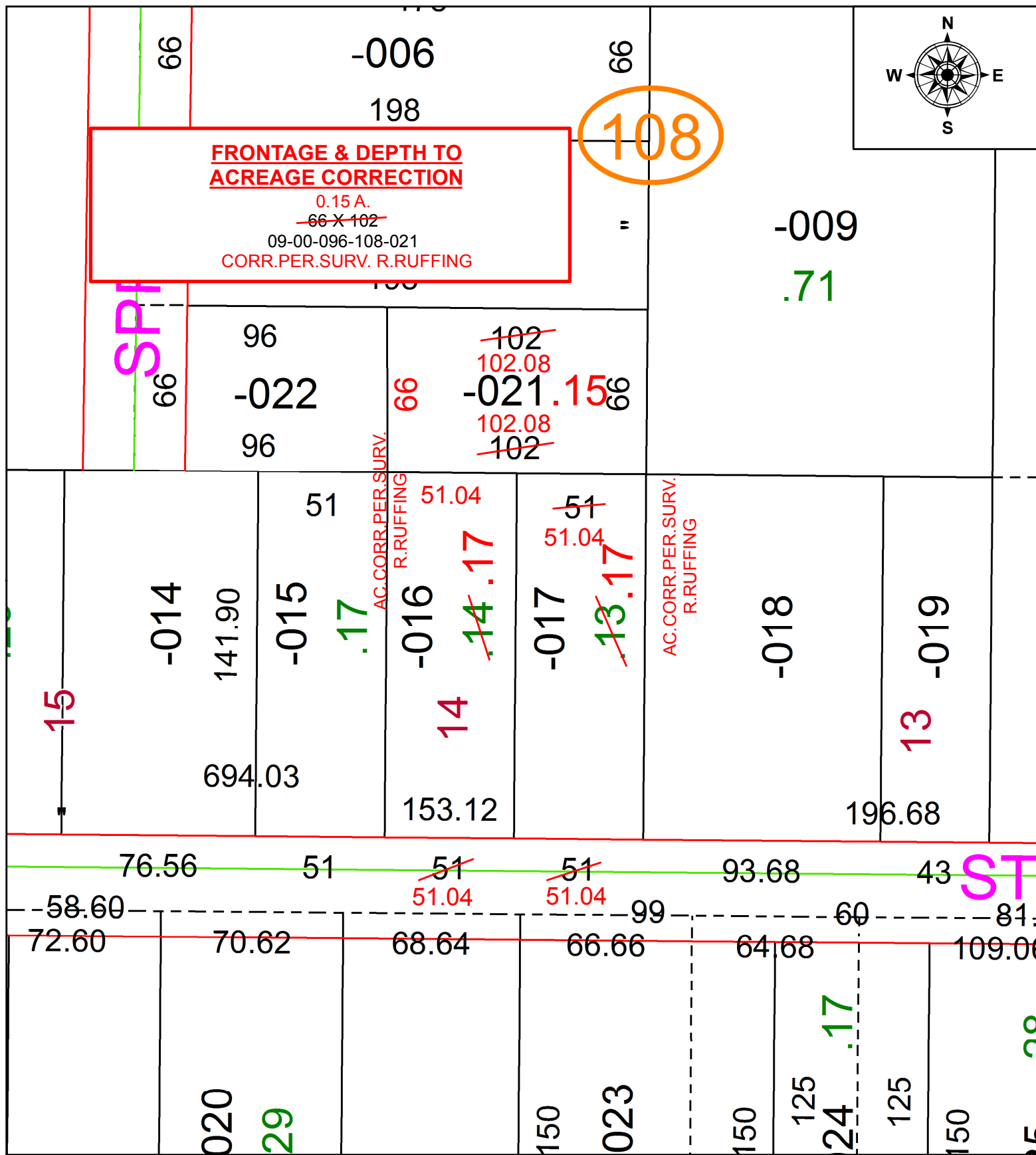
STARTING POINT: INTERSECTION OF C/L OF SUMNER ST. AND EAST LINE OF O.L.96



**FRONTAGE & DEPTH TO
ACREAGE CORRECTION**
 0.15 A.
~~66 X 102~~
 09-00-096-108-021
 CORR.PER.SURV. R.RUFFING

108

SPI



SPLITS/DEEDS PROCESSED
 LORAIN COUNTY TAX MAP DEPARTMENT
 226 MIDDLE AVE. ELYRIA, OH

SURVEYED BY: ROBERT M. RUFFING
 CLOSURE: 1:214743648
 MAP PAGE(S): 9-00-096
 APPROVED BY: RRM DATE: 2-5-21
 SCALE: 1" = 50 PRIOR INSTRUMENT: 20190732576