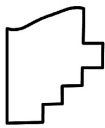
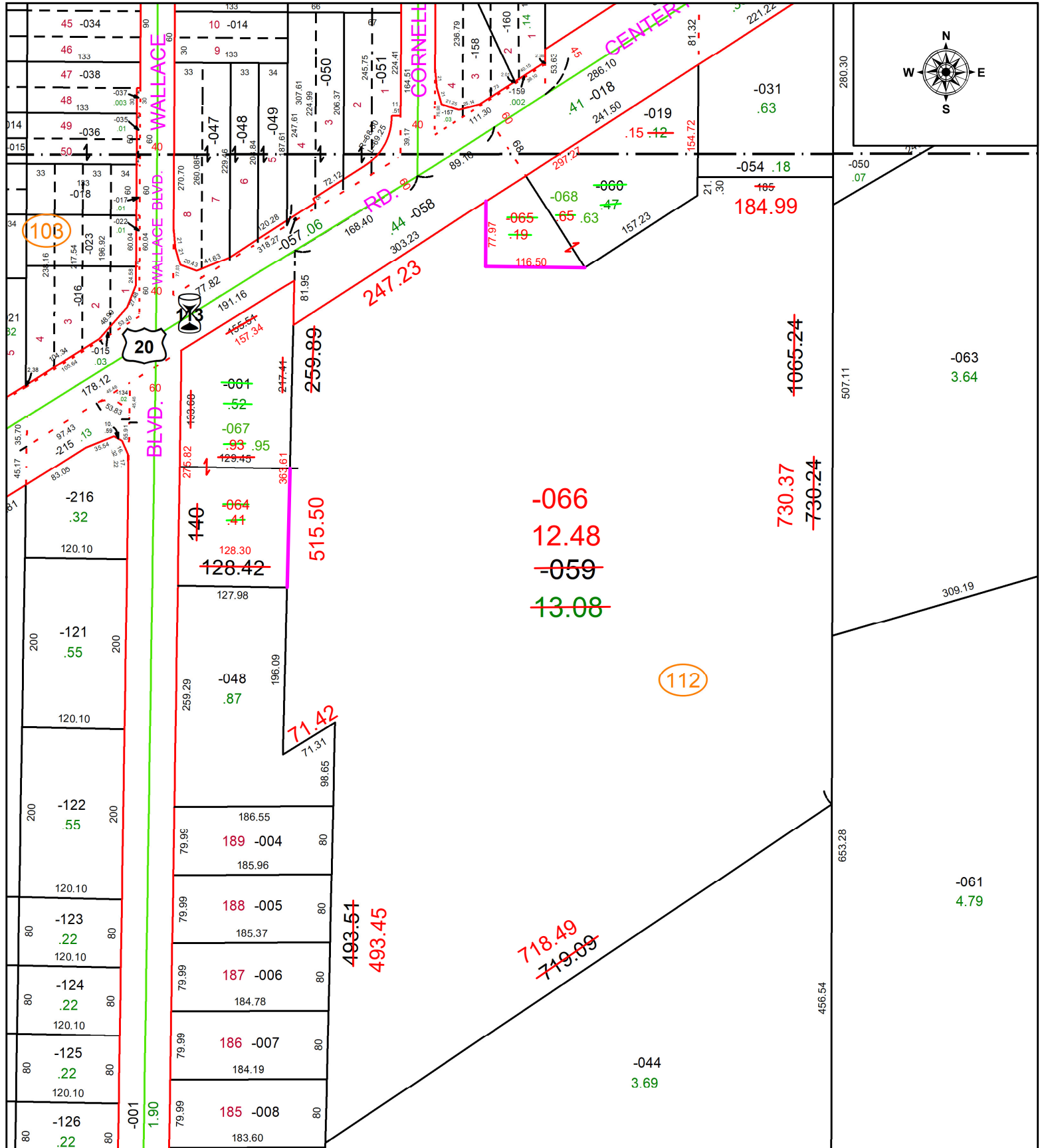


PARENT PARCEL: 07-00-016-112-001, -059, & -060, 07-00-017-130-019 (S.T.)

CHILD PARCEL: 07-00-016-112-064 THRU -068 & 07-00-017-130-019 ACREAGE CORRECTION PER STEVEN METCALF

22-04483

STARTING POINT: INTERSECTION OF C/LS OF PITTS BLVD & CENTER RIDGE RD



**SPLITS/DEEDS PROCESSED**  
 LORAIN COUNTY TAX MAP DEPARTMENT  
 226 MIDDLE AVE. ELYRIA, OH

SURVEYED BY: STEVEN METCALF  
 CLOSURE: 1: 159143  
 MAP PAGE(S): 07-00-016 & 07-00-017  
 APPROVED BY: WRZ DATE: 5/25/2022  
 SCALE: 1" = 150 PRIOR INSTRUMENT: 2013-0475370