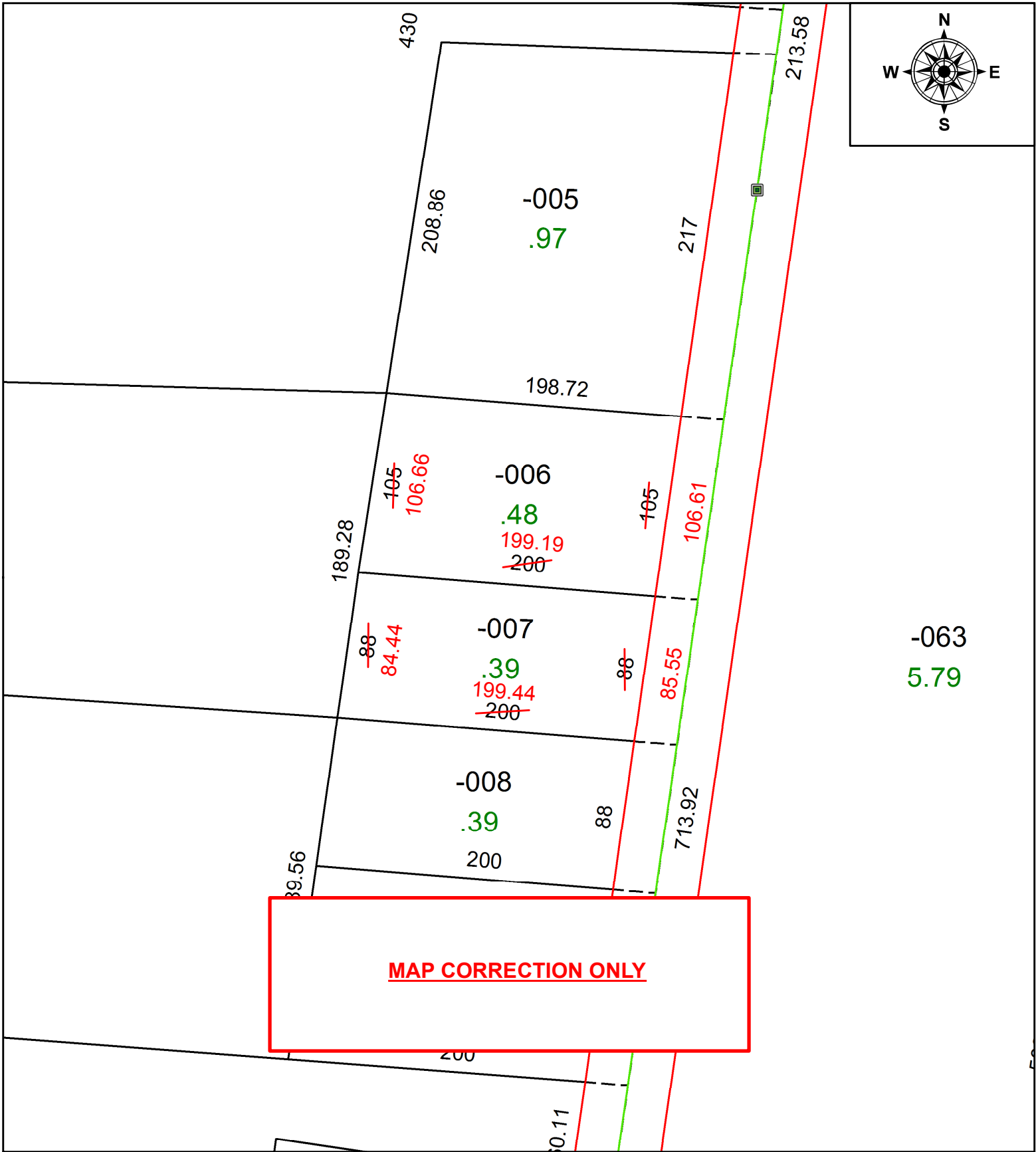


PARENT PARCEL: 15-00-049-000-006, -007

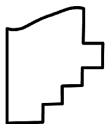
CHILD PARCEL:

STARTING POINT: INTERSECTION OF C/L OF S.R. 303 AND C/L OF INDIAN HOLLOW RD.

21-04477-C



**MAP CORRECTION ONLY**



**SPLITS/DEEDS PROCESSED**  
LORAIN COUNTY TAX MAP DEPARTMENT  
226 MIDDLE AVE. ELYRIA, OH

SURVEYED BY: THOMAS A. SIMON  
CLOSURE: 1:148,869  
MAP PAGE(S): 15-00-049  
APPROVED BY: RRM DATE: 1-20-21  
SCALE: 1" = 75' PRIOR INSTRUMENT: 20200790588