

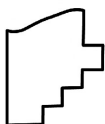
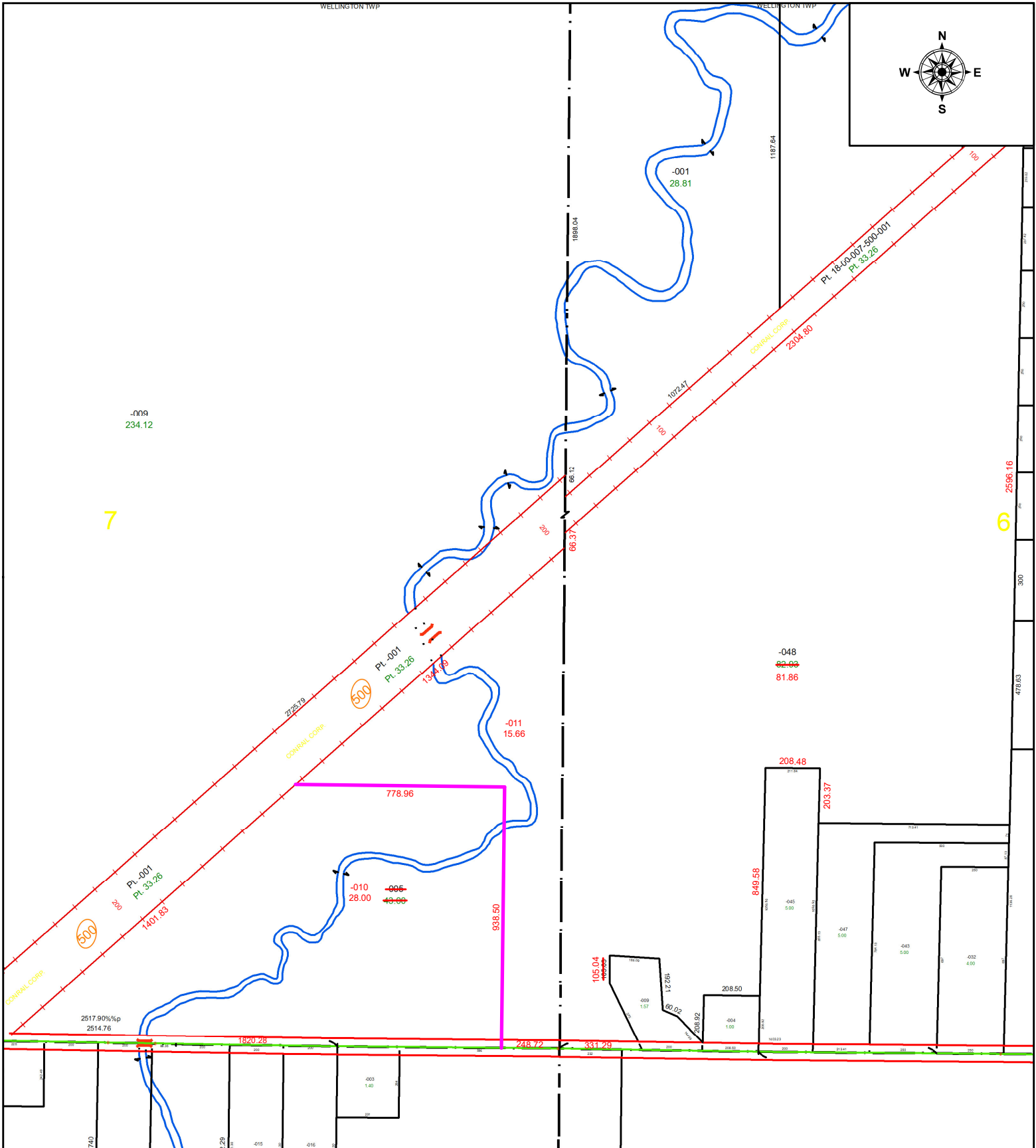
PARENT PARCEL: 18-00-006-000-048 & 18-00-007-000-005

CHILD PARCEL: 18-00-006-000-048, 18-00-007-000-010 & -011

AC CORR. PER THOMAS SIMON

22-04462

STARTING POINT: SOUTHEASTERLY CORNER OF O.L. 7 & C/L OF PECK WADSWORTH RD



SPLITS/DEEDS PROCESSED
 LORAIN COUNTY TAX MAP DEPARTMENT
 226 MIDDLE AVE. ELYRIA, OH

SURVEYED BY: THOMAS A. SIMON

CLOSURE: 1: 1543877

MAP PAGE(S): 18-00-006 & -007

APPROVED BY: WRZ DATE: 4/15/2022

SCALE: 1" = 500 PRIOR INSTRUMENT: 2021-0816781