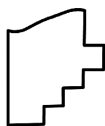
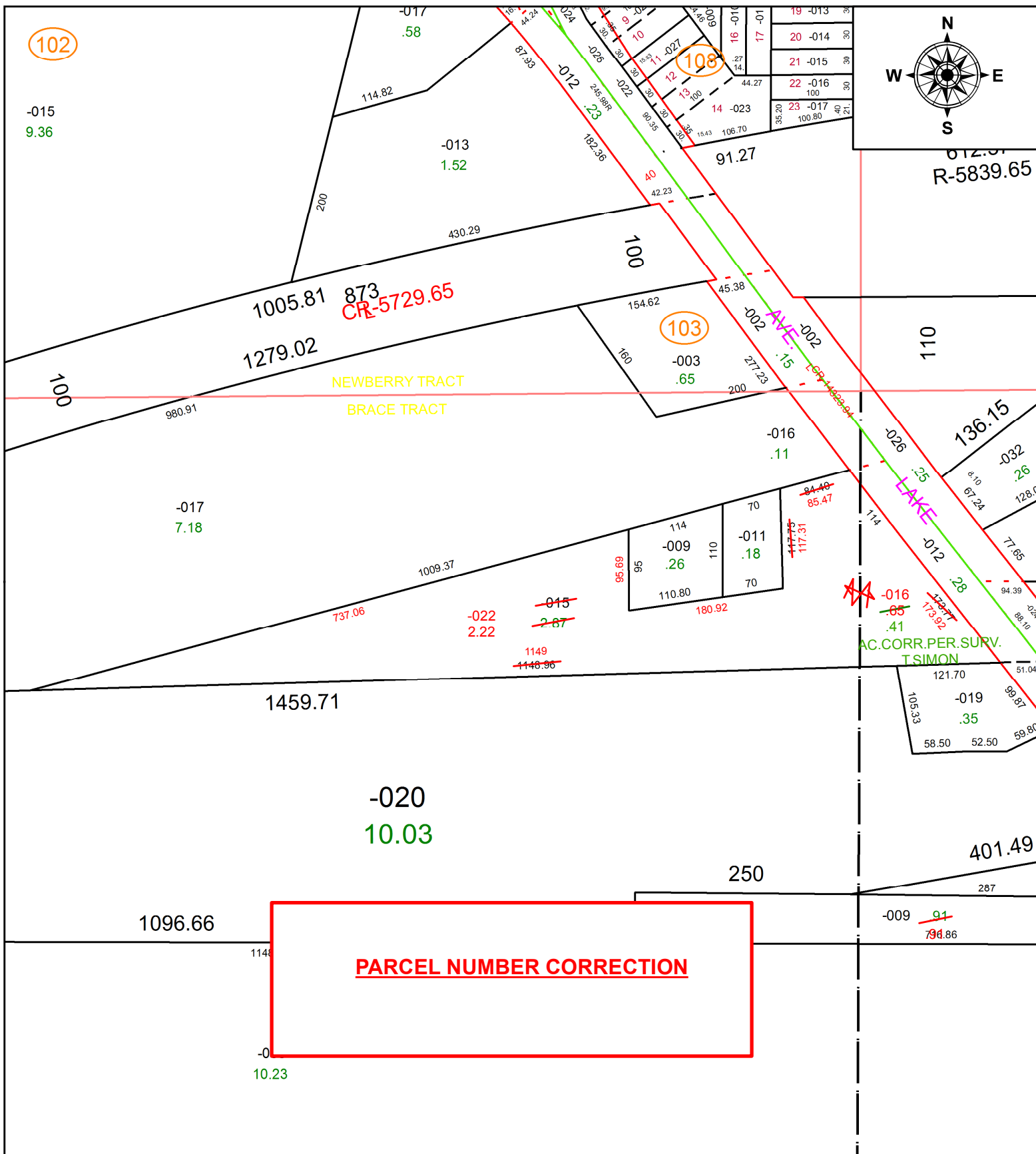


PARENT PARCEL: 06-23-006-000-015

CHILD PARCEL: 06-23-006-000-022, 06-23-008-101-016

STARTING POINT: INTERSECTION OF C/L OF LAKE AVE. AND C/L OF DEBRA DR.

20-04462-C



SPLITS/DEEDS PROCESSED
 LORAIN COUNTY TAX MAP DEPARTMENT
 226 MIDDLE AVE. ELYRIA, OH

SURVEYED BY: THOMAS A. SIMON
 CLOSURE: 1: 1,944,494
 MAP PAGE(S): 6-23-006
 APPROVED BY: RRM DATE: 12-22-20
 SCALE: 1" = 150 PRIOR INSTRUMENT: 20140495555