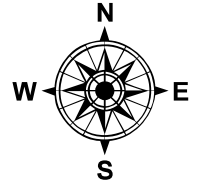
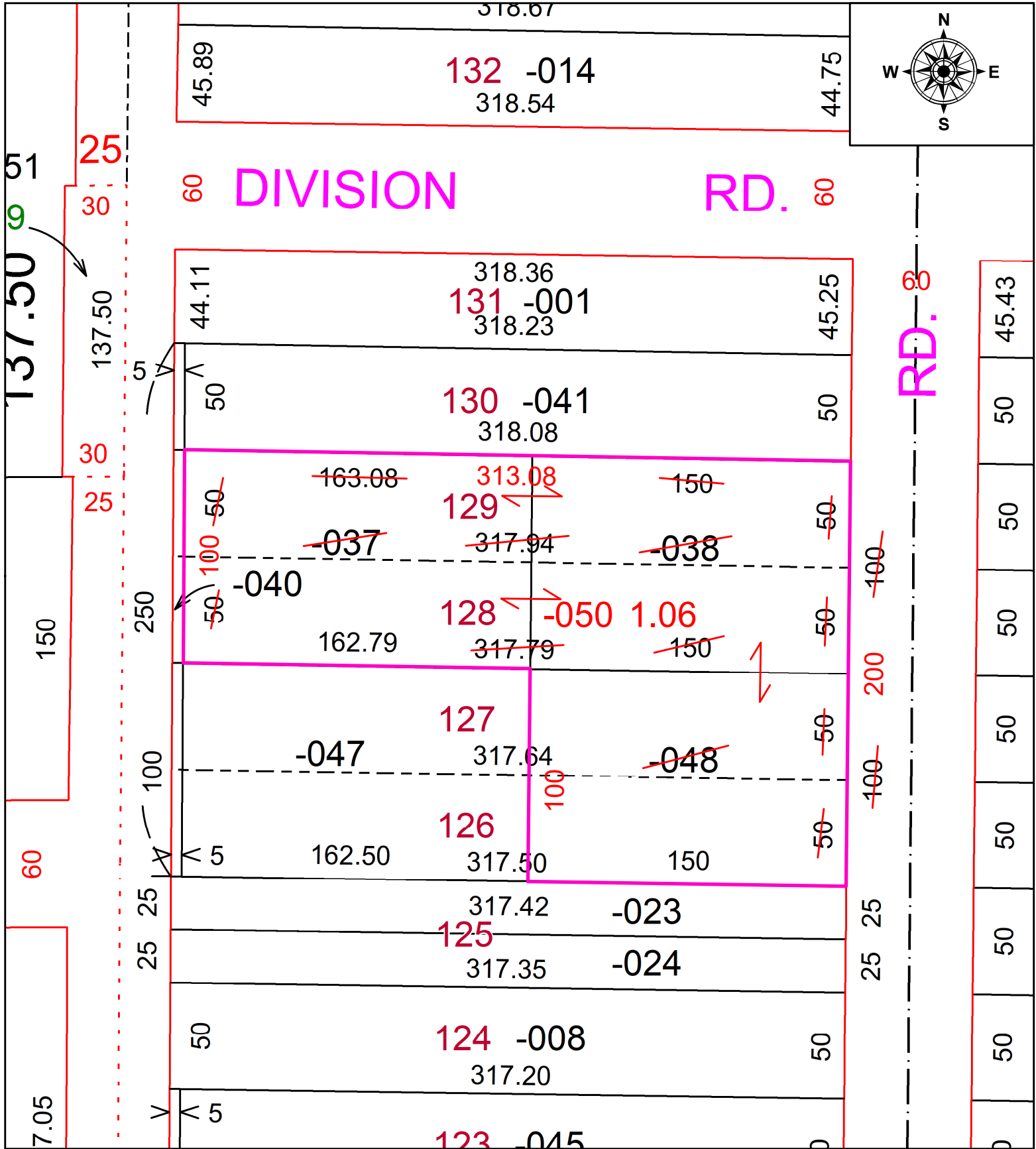


PARENT PARCEL: 04-00-018-161-037, 038 & -048

CHILD PARCEL: 04-00-018-161-050

STARTING POINT: CL OF LEWIS ST. & CARRIAGE LN.

22-04461



SPLITS/DEEDS PROCESSED
 LORAIN COUNTY TAX MAP DEPARTMENT
 226 MIDDLE AVE. ELYRIA, OH

SURVEYED BY: STUART SAYLER
 CLOSURE: 1: 358774
 MAP PAGE(S): 04-00-018
 APPROVED BY: DMA DATE: 4/13/2022
 SCALE: 1" = 60' PRIOR INSTRUMENT: 2014-0517910