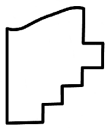
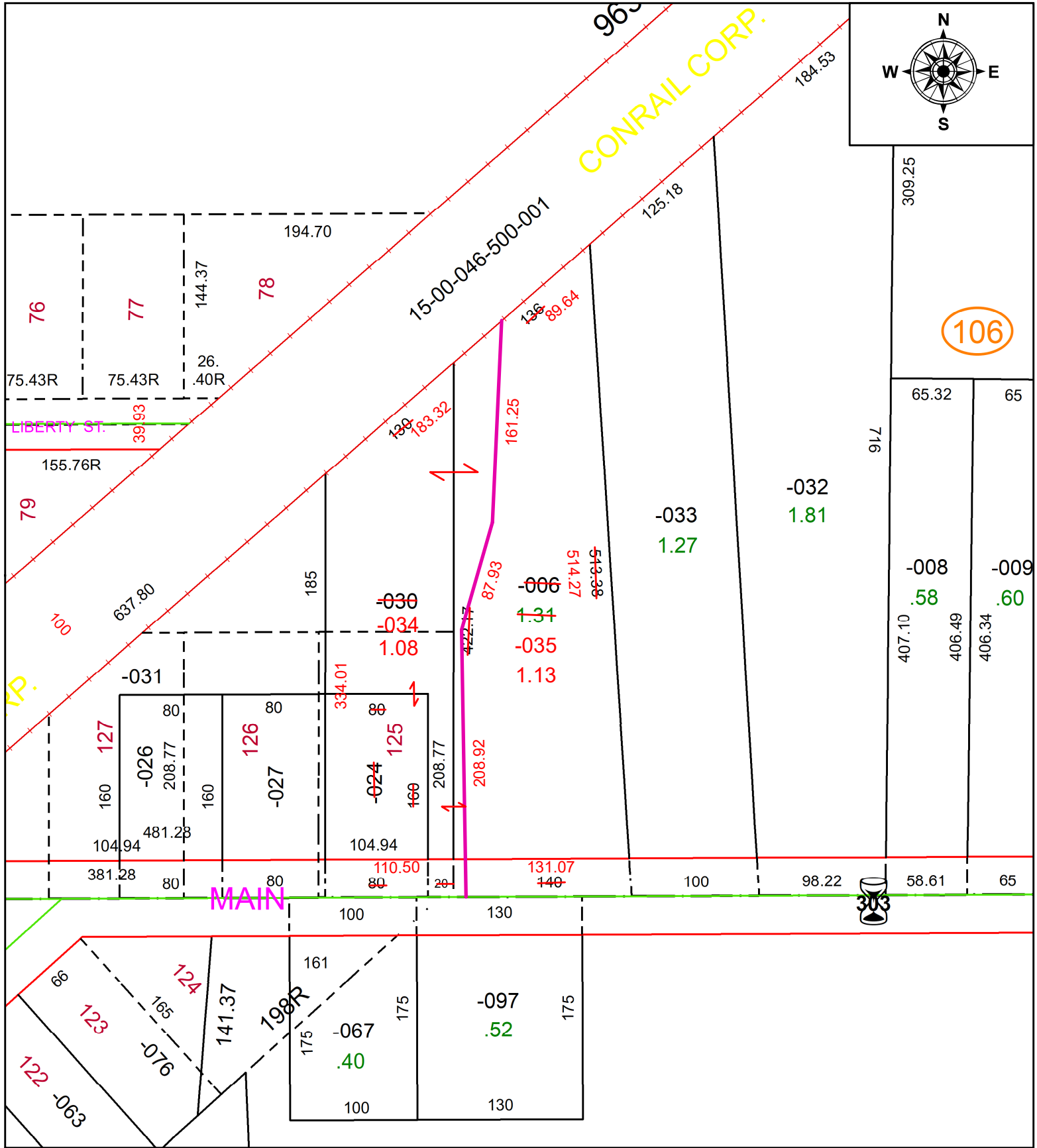


PARENT PARCEL: 15-00-046-106-006, -024, -030

CHILD PARCEL: 15-00-046-106-034 & -035

STARTING POINT: **CENTER OF TOWN SQUARE AND C/L OF E MAIN ST**

22-04457



SPLITS/DEEDS PROCESSED
 LORAIN COUNTY TAX MAP DEPARTMENT
 226 MIDDLE AVE. ELYRIA, OH

SURVEYED BY: THEODORE J. SPILLMAN
CLOSURE: 1: 1378708
MAP PAGE(S): 15-00-046-B
APPROVED BY: AC **DATE:** 4/6/2022
SCALE: 1" = 100 **PRIOR INSTRUMENT:** 2021- 0832523