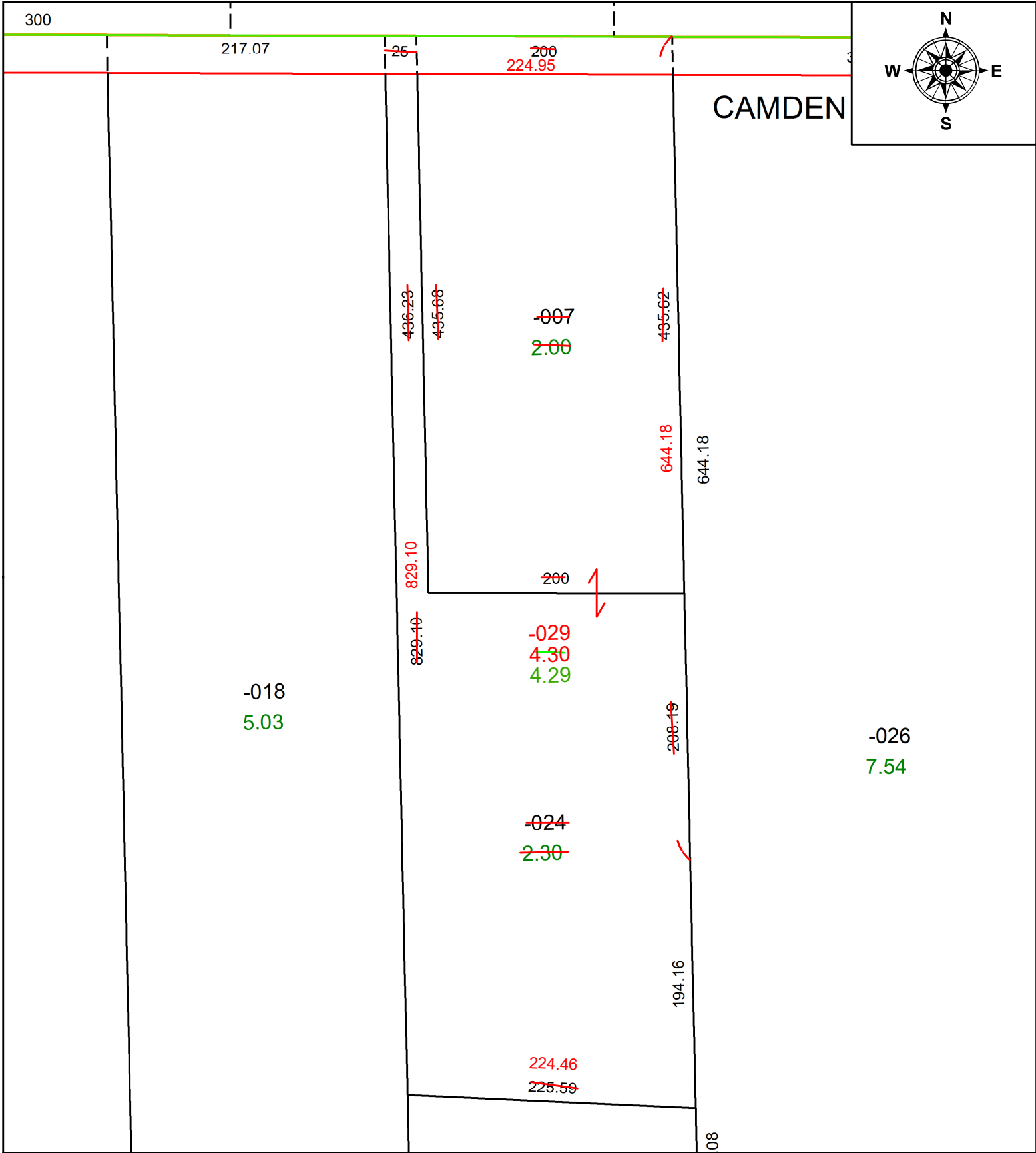


PARENT PARCEL: 13-11-002-000-007 & -024

CHILD PARCEL: 13-11-002-000-029

STARTING POINT: **AC CORR PER SURV BY RICHARD J. KOLE**

22-04455



SPLITS/DEEDS PROCESSED
 LORAIN COUNTY TAX MAP DEPARTMENT
 226 MIDDLE AVE. ELYRIA, OH

SURVEYED BY: RICHARD J. KOLE
 CLOSURE: 1: 1549979
 MAP PAGE(S): 13-11-002
 APPROVED BY: AC DATE: 4/1/2022
 SCALE: 1" = 100 PRIOR INSTRUMENT: 2019- 0713511