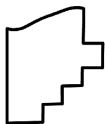
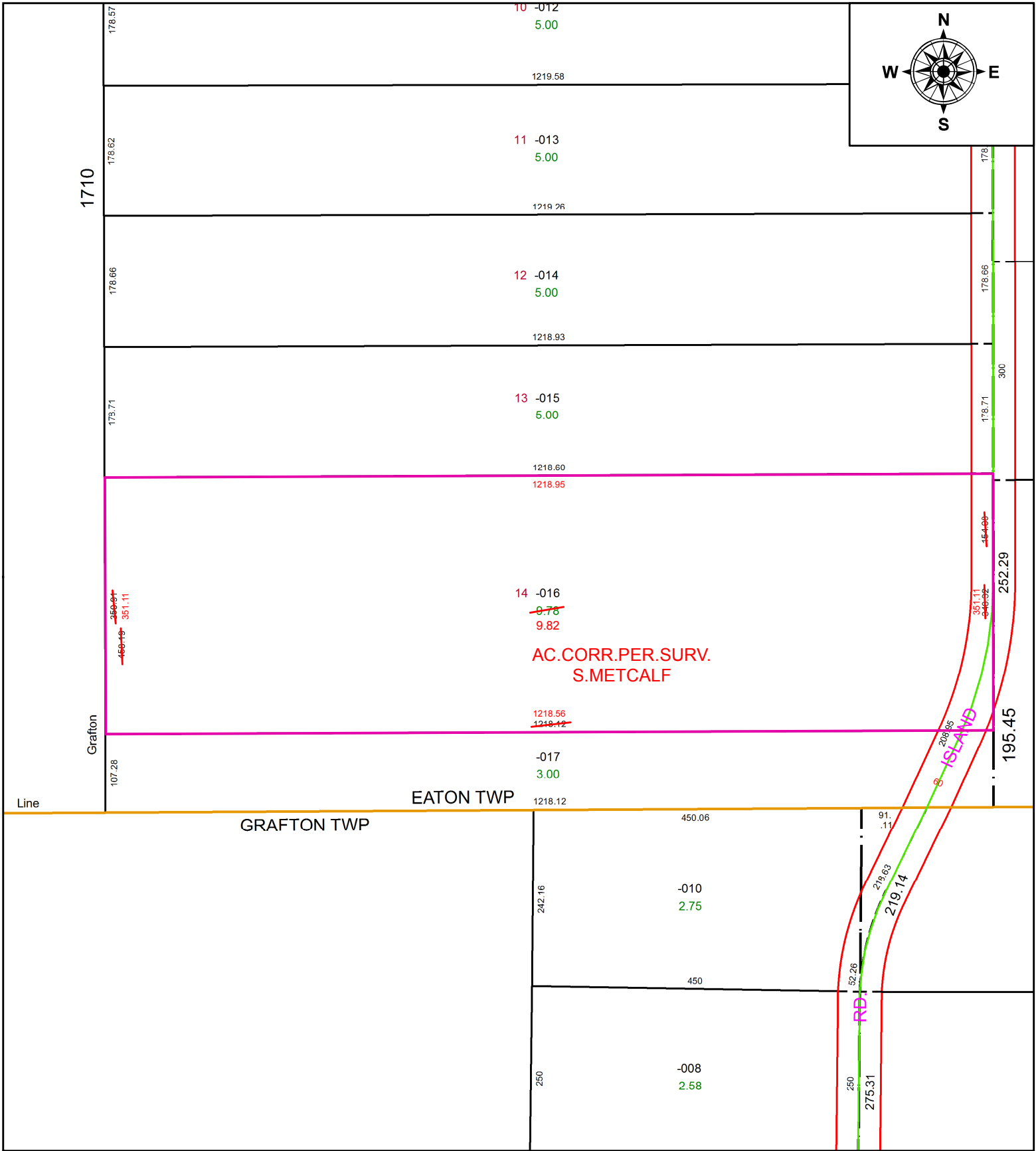


PARENT PARCEL: 11-00-040-000-016

CHILD PARCEL:

STARTING POINT: SOUTHEAST CORNER OF O.L.40

20-04455-C



SPLITS/DEEDS PROCESSED
 LORAIN COUNTY TAX MAP DEPARTMENT
 226 MIDDLE AVE. ELYRIA, OH

SURVEYED BY: STEVEN J. METCALF

CLOSURE: 1: 2,324,423

MAP PAGE(S): 11-00-040

APPROVED BY: RRM **DATE:** 12-15-20

SCALE: 1" = 175 **PRIOR INSTRUMENT:** 20180671716