

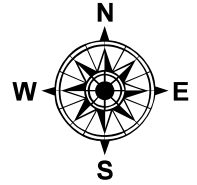
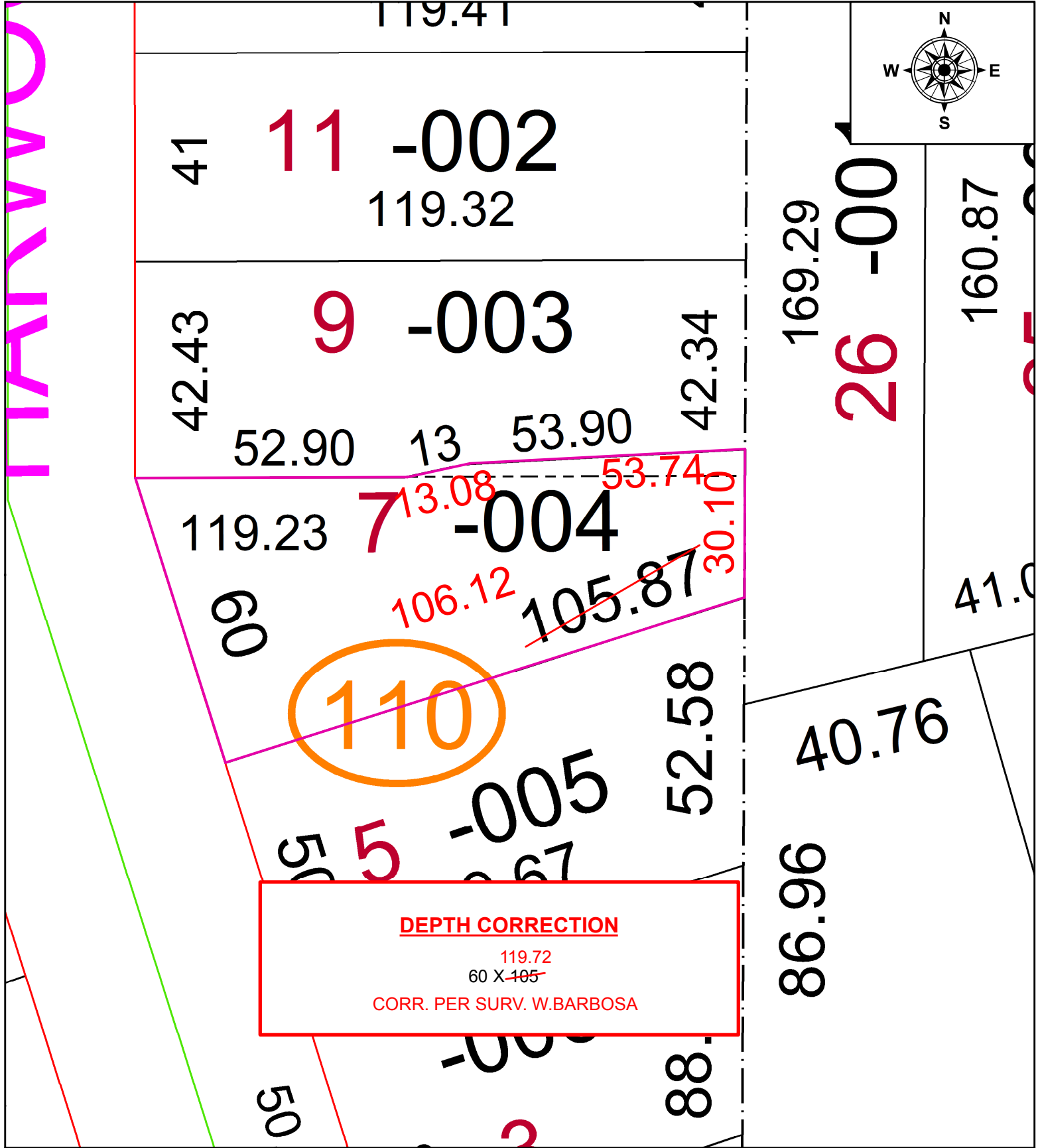
PARENT PARCEL: 06-25-035-110-004

CHILD PARCEL:

STARTING POINT:

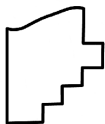
NORTHWEST CORNER OF S/L 7 IN R.B. LERSCH ALLOTMENT

20-04449-C



110

**DEPTH CORRECTION**  
 119.72  
 60 X 405  
 CORR. PER SURV. W. BARBOSA



**SPLITS/DEEDS PROCESSED**  
 LORAIN COUNTY TAX MAP DEPARTMENT  
 226 MIDDLE AVE. ELYRIA, OH

SURVEYED BY: WILFREDO BARBOSA  
 CLOSURE: 1:16,817  
 MAP PAGE(S): 6-25-035  
 APPROVED BY: RRM DATE: 12-7-20  
 SCALE: 1" = 25' PRIOR INSTRUMENT: 20170652402