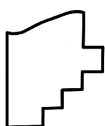
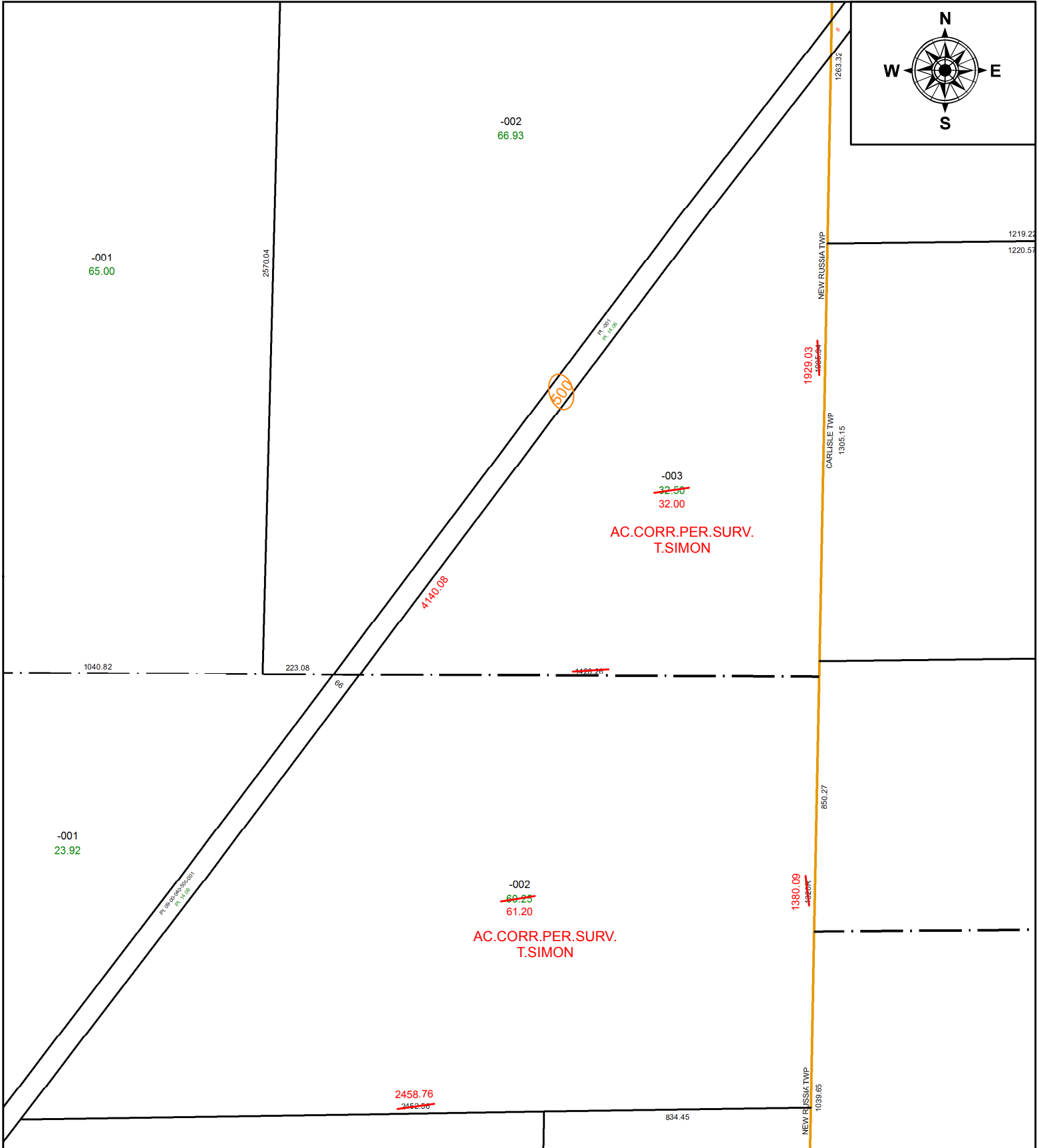


PARENT PARCEL: 09-00-040-000-003, 09-00-050-000-002

CHILD PARCEL:

STARTING POINT: INTERSECTION OF C/L OF BUTTERNUT RIDGE RD. AND EAST LINE OF NEW RUSSIA TOWNSHIP

20-04447-A



SPLITS/DEEDS PROCESSED
 LORAIN COUNTY TAX MAP DEPARTMENT
 226 MIDDLE AVE. ELYRIA, OH

SURVEYED BY: THOMAS A. SIMON
CLOSURE: 1:630,271
MAP PAGE(S): 9-00-040
APPROVED BY: RRM **DATE:** 12-3-20
SCALE: 1" = 400 **PRIOR INSTRUMENT:** 20200773864