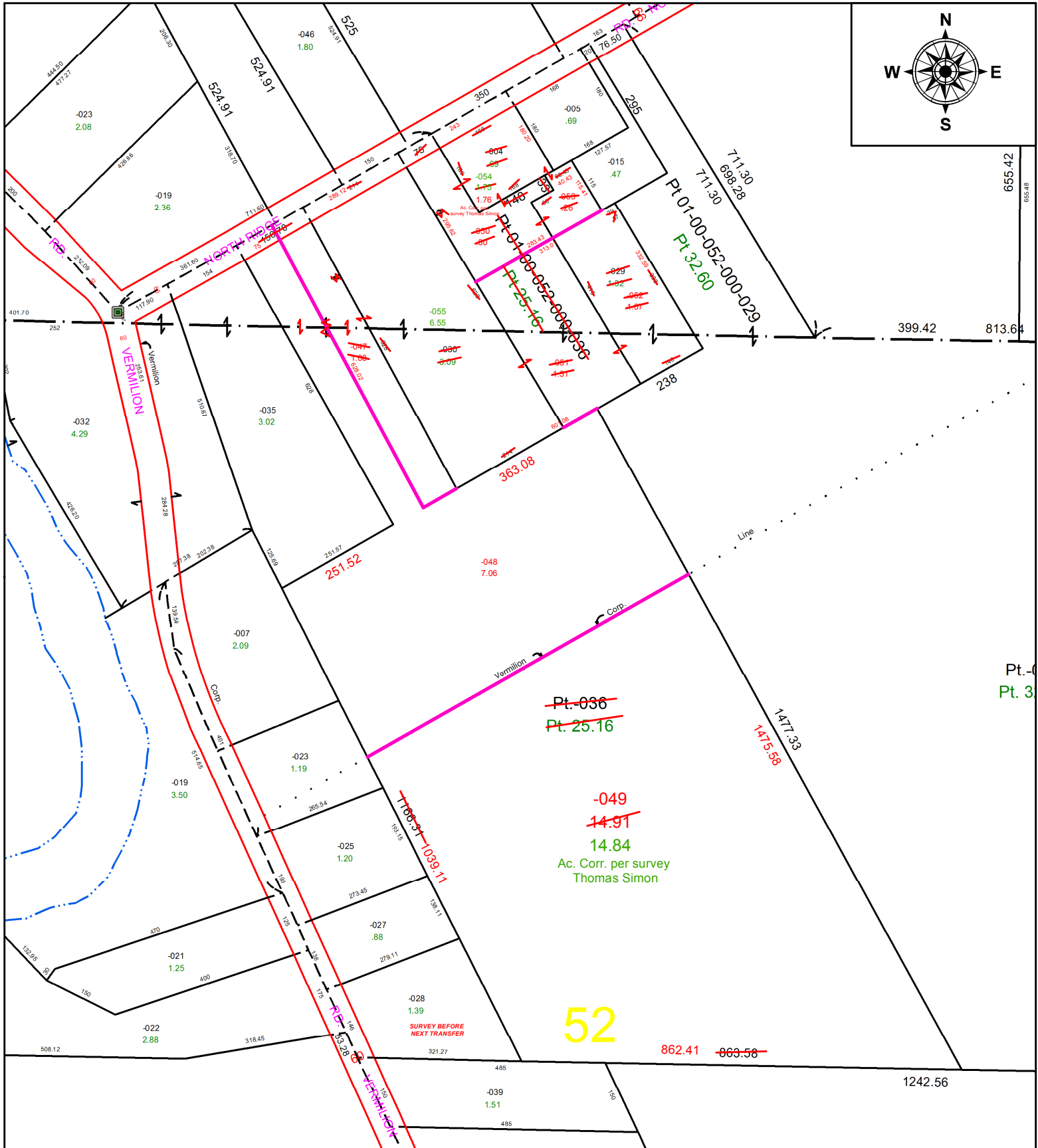


PARENT PARCEL: 01-00-045-000-004, -029 & 01-00-052-000-030, -036

CHILD PARCEL: 01-00-045-000-050 thru -055 & 01-00-052-000-047 thru -049

STARTING POINT: CL OF VERMILION RD. & NORTH RIDGE ROAD

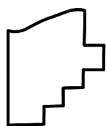
22-04443



~~Pt. 036~~
~~Pt. 25.16~~

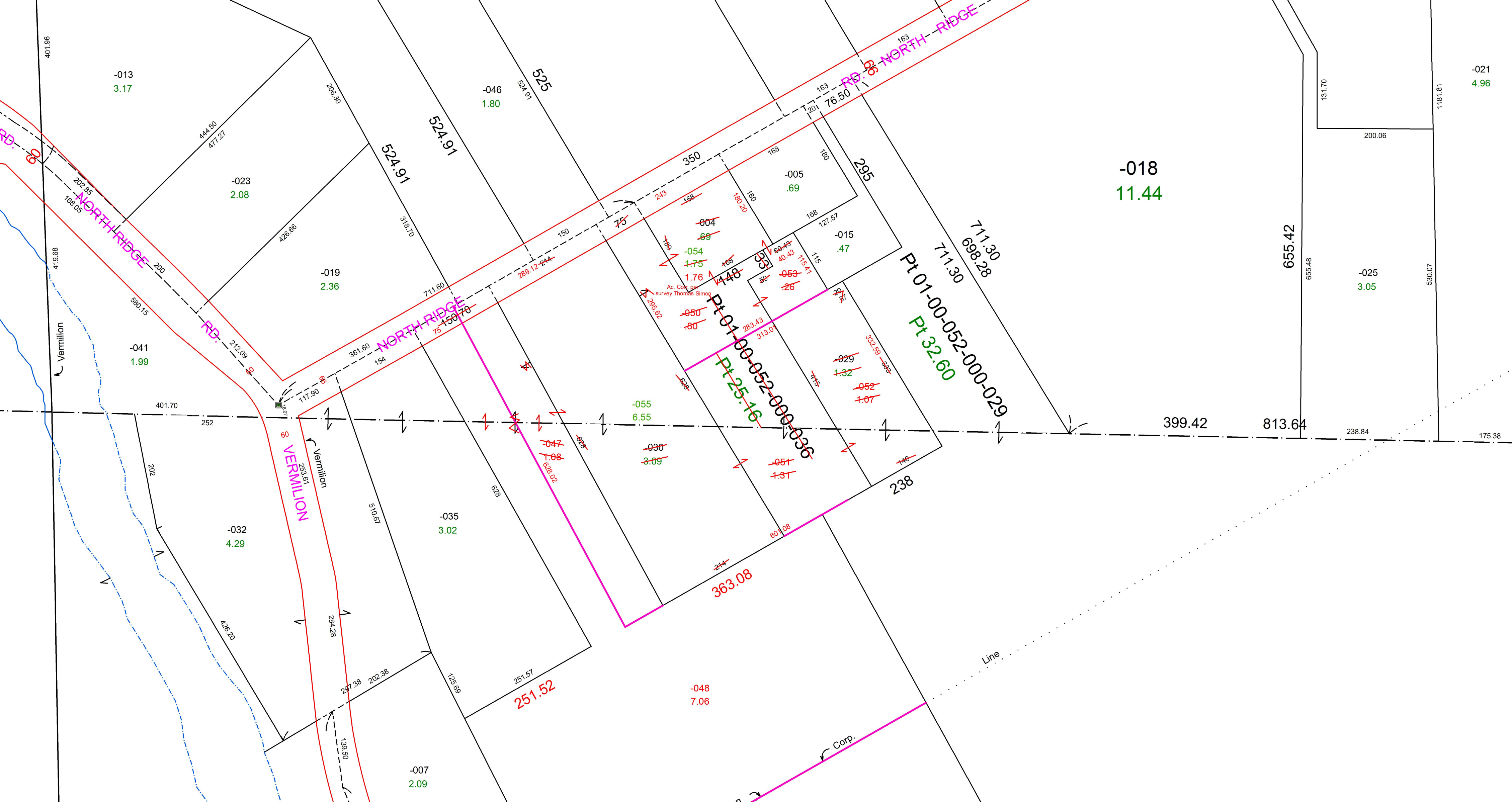
~~-049~~
~~14.91~~
14.84
Ac. Corr. per survey
Thomas Simon

52



SPLITS/DEEDS PROCESSED
LORAIN COUNTY TAX MAP DEPARTMENT
226 MIDDLE AVE. ELYRIA, OH

SURVEYED BY: THOMAS SIMON
CLOSURE: 1: 210,157
MAP PAGE(S): 01-00-045 & -01-00-052
APPROVED BY: DMA DATE: 2/16/2022
SCALE: 1" = 250' PRIOR INSTRUMENT: 2021-0839976



-013
3.17

-023
2.08

-019
2.36

-041
1.99

-032
4.29

-007
2.09

-046
1.80

-035
3.02

-055
6.55

-030
3.09

-048
7.06

-005
.69

-015
.47

-029
1.32

-052
1.07

-025
3.05

-021
4.96

-018
11.44

RD. 8 NORTH RIDGE

NORTH RIDGE

RD. 8 NORTH RIDGE

VERMILION

Vermilion

Vermilion

Corp.

Line

Ac. Cont. by survey Thomas Simon

Pt 01-00-052-000-036

Pt 25.16

Pt 01-00-052-000-029

Pt 32.60

251.52

363.08

711.30
698.28

655.42

399.42

813.64

238.84

175.38

401.96

419.68

401.70

252

202

426.20

284.28

297.38

202.38

139.50

125.69

251.57

628

510.67

154

361.60

711.60

524.91

524.91

525

524.91

150

289.12

244

75

168

168

168

168

168

168

168

168

168

168

168

168

168

168

168

168

168

243

168

168

168

168

168

168

168

168

168

168

168

168

168

168

168

168

168

168

168

168

168

168

168

168

168

168

168

168

168

168

168

168

168

168

168

168

168

168

168

168

168

168

168

168

168

168

168

168

168

168

168

168

168

168

168

168

168

168

168

168

168

168

168

168

168

168

168

168

168

168

168

168

168

168

168

168

168

168

168

168

168

168

168

168

168

168

168

168

168

168

168

168

168

168

168

168

168

168

168

168

168

168

168

168

168

168

168

168

168

168

168

168

168

168

168

168

168

168

168

168

168

168

168

168

168

168

168

168

168

168

168

168

168

168

168

168

168

168

168

168

168

168

168

168

168

168

168

168

168

168

168

168

168

168

168

168

168

168

168

168

168

168

168

168

168

168

168

168

168

168

168

168

168

168

168

168

168

168

168

168

168

168

168

168

168

168

168

168

168

168

168

168

168

168

168

168

168

168

168

168

168

168

168

168

168

168

168

168

168

168

168

168

168

168

168

168

168

168

168

168

168

168

168

168

168

168

168

168

168

168

168

168

168

168

168

168

168

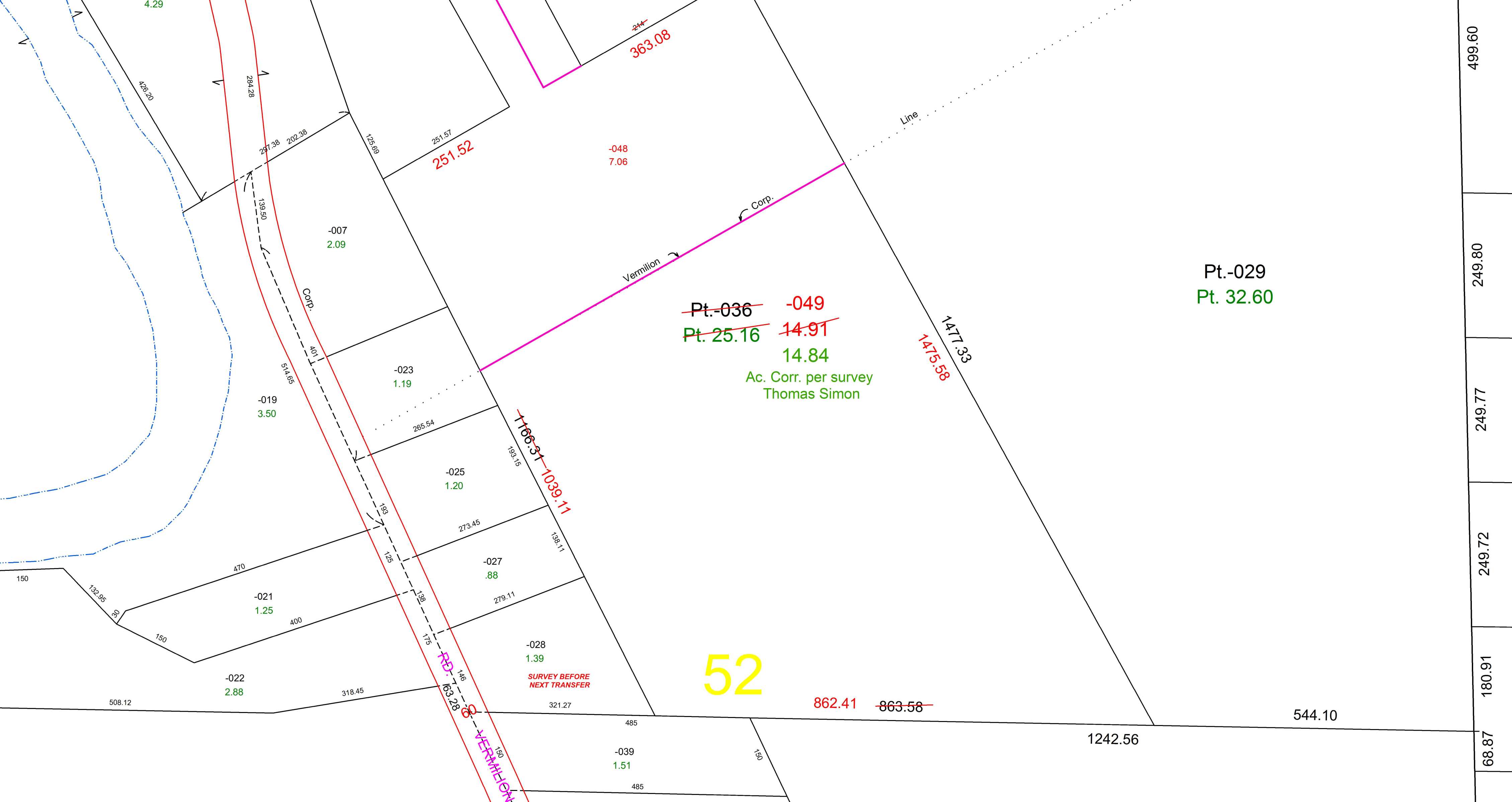
168

168

168

168

168



499.60
249.80
249.77
249.72
180.91
68.87

Pt.-029
Pt. 32.60

~~Pt.-036~~ -049
Pt. 25.16 14.91
 14.84
Ac. Corr. per survey
Thomas Simon

52

SURVEY BEFORE
NEXT TRANSFER

VERMILION

-048
7.06

251.52

Vermilion

Corp.

Corp.

Line

1477.33
1475.58

~~1166.31~~ 1039.11

63.28

862.41 ~~863.58~~

1242.56

544.10

-022
2.88

-021
1.25

-019
3.50

-023
1.19

-025
1.20

-027
.88

-028
1.39

-039
1.51

-007
2.09

426.20

284.28

297.38

202.38

125.69

251.57

~~244~~
363.08

150

132.95

30

150

470

400

318.45

138

273.45

193.15

138.11

279.11

485

150

485

265.54

514.65

401

426.20

4.29

508.12

321.27

485

150

485

265.54

514.65

401

426.20

4.29

508.12

321.27

485

150

485