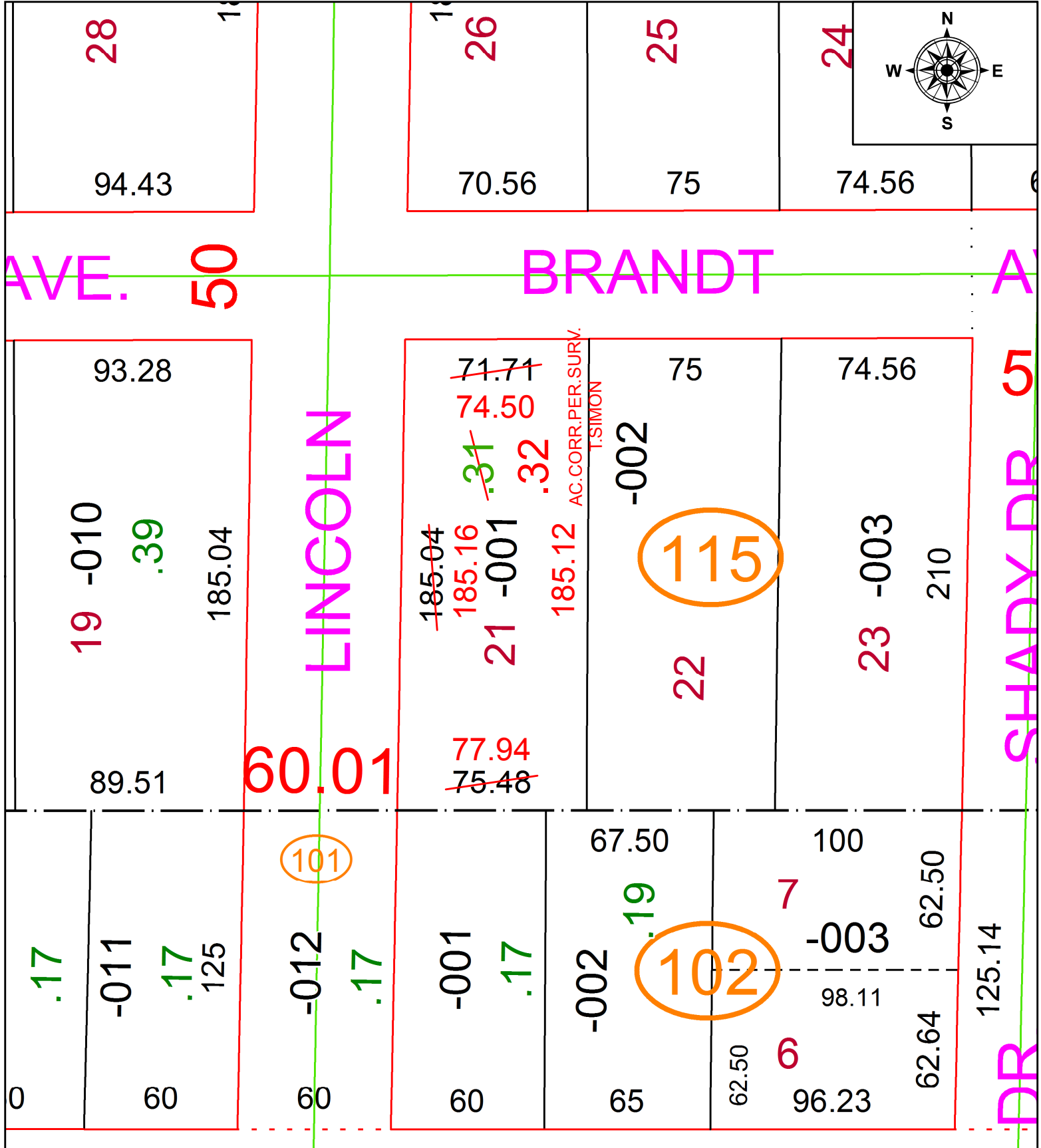


PARENT PARCEL: 05-00-022-115-001

CHILD PARCEL:

STARTING POINT: INTERSECTION OF C/L OF BRADNT AVE AND C/L OF LINCOLN ST.

20-04439-C



SPLITS/DEEDS PROCESSED
LORAIN COUNTY TAX MAP DEPARTMENT
226 MIDDLE AVE. ELYRIA, OH

SURVEYED BY:	THOMAS A. SIMON
CLOSURE:	1:121,345
MAP PAGE(S):	5-00-022
APPROVED BY:	RRM DATE: 11-19-20
SCALE:	1" = 50 PRIOR INSTRUMENT: 20160594923