

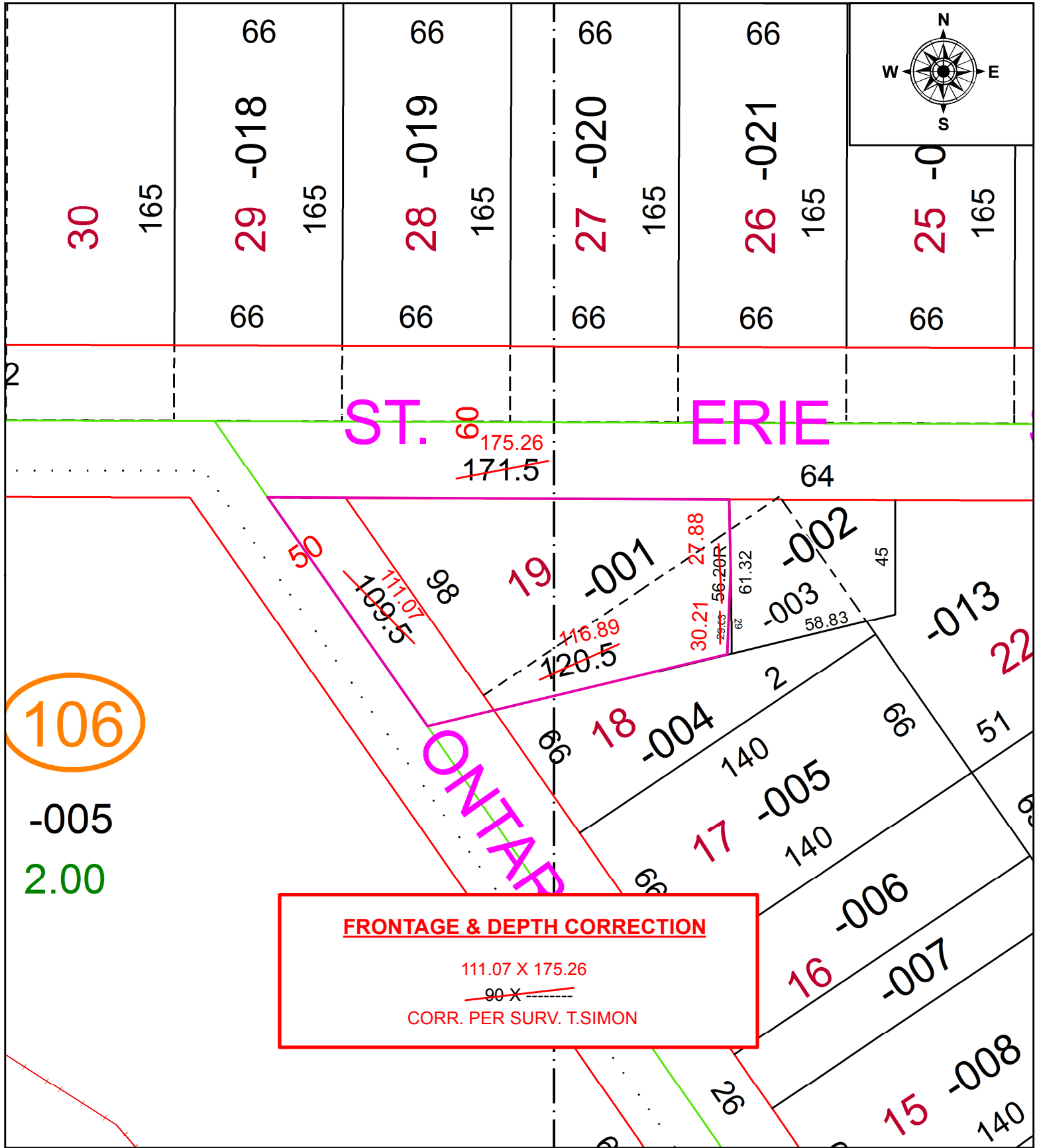
PARENT PARCEL: 11-00-081-103-001

CHILD PARCEL:

STARTING POINT:

INTERSECTION OF C/L OF ERIE ST. AND C/L OF ONTARIO ST.

20-04438-C

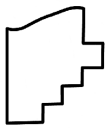


106

-005
2.00

FRONTAGE & DEPTH CORRECTION

111.07 X 175.26
~~90 X~~
 CORR. PER SURV. T.SIMON



SPLITS/DEEDS PROCESSED
 LORAIN COUNTY TAX MAP DEPARTMENT
 226 MIDDLE AVE. ELYRIA, OH

SURVEYED BY: THOMAS A. SIMON
 CLOSURE: 1:140,195
 MAP PAGE(S): 11-00-081
 APPROVED BY: RRM DATE: 11-19-20
 SCALE: 1" = 50 PRIOR INSTRUMENT: 20120402627