

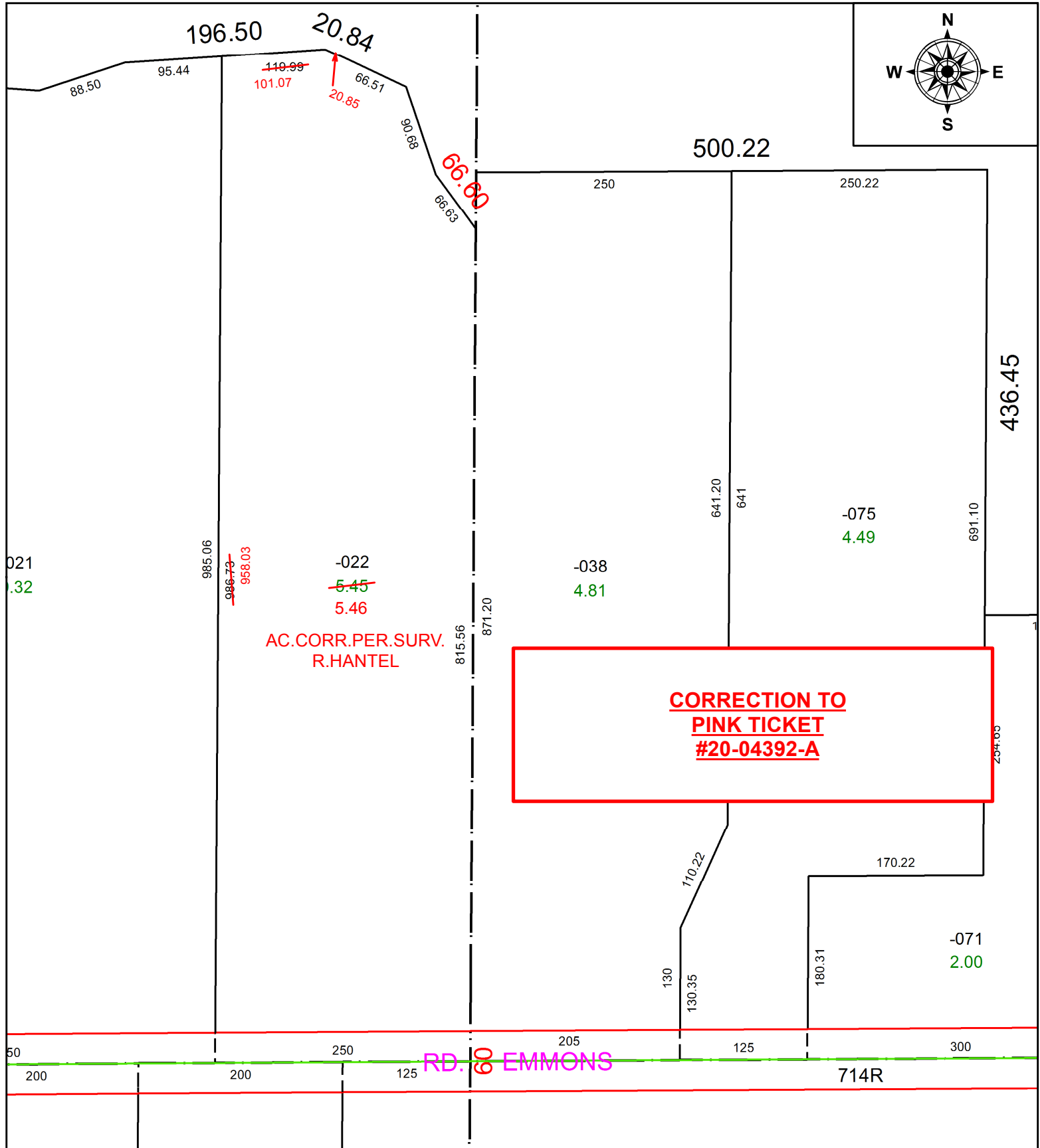
PARENT PARCEL: 12-00-013-000-022

CHILD PARCEL:

STARTING POINT:

INTERSECTION OF C/L OF EMMONS RD AND EAST LINE OF O.L.13

20-04432-C



021
0.32

50

200

200

125

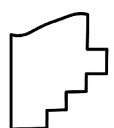
250

205

125

300

714R



SPLITS/DEEDS PROCESSED
 LORAIN COUNTY TAX MAP DEPARTMENT
 226 MIDDLE AVE. ELYRIA, OH

SURVEYED BY: RICHARD F. HANTEL
CLOSURE: 1:529,144
MAP PAGE(S): 12-00-013
APPROVED BY: RRM **DATE:** 10-30-20
SCALE: 1" = 125 **PRIOR INSTRUMENT:** 20200785933