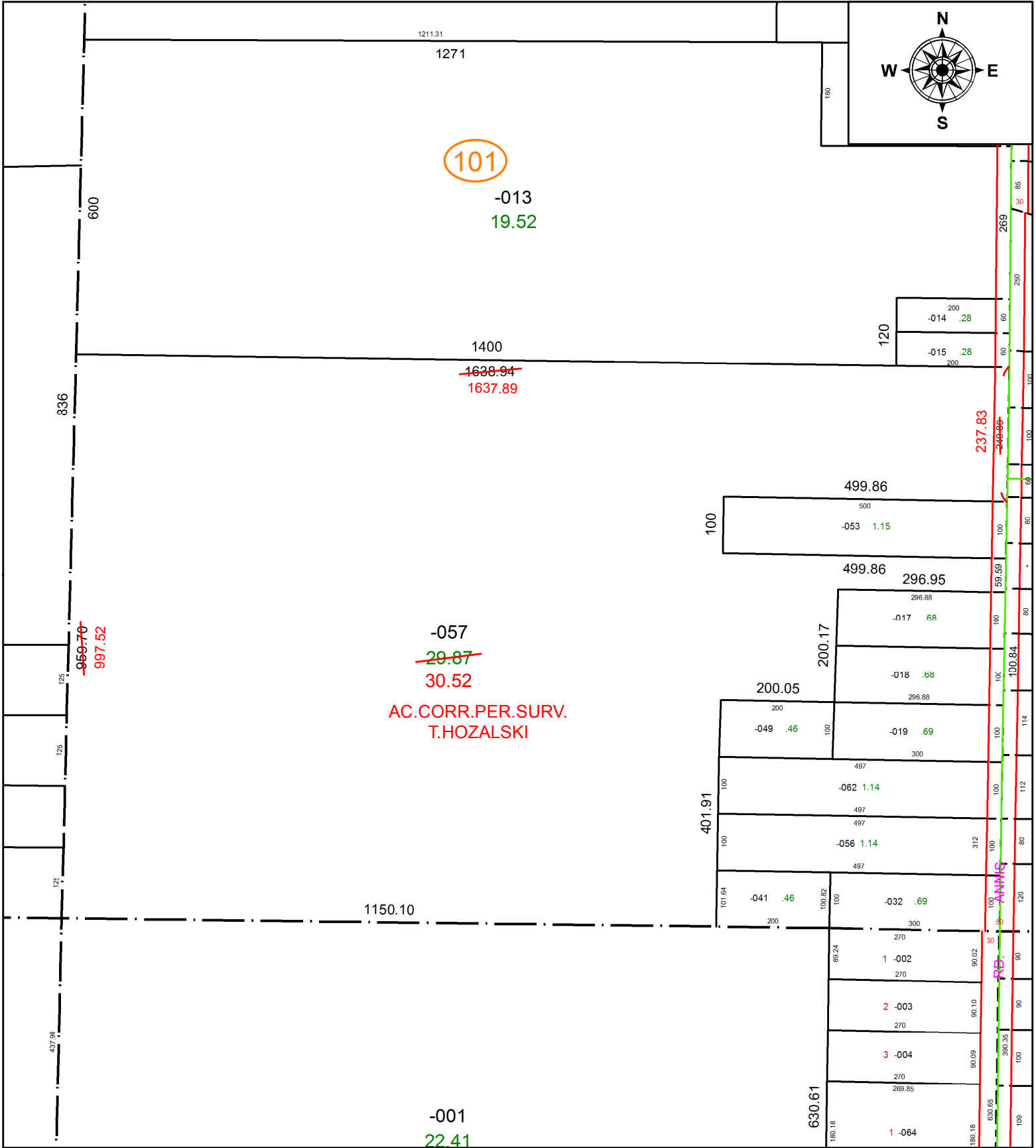


PARENT PARCEL: 09-00-004-101-057

CHILD PARCEL:

STARTING POINT: SOUTHEAST CORNER OF O.L.4

20-04431-C



101

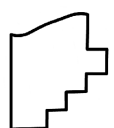
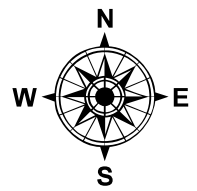
-013  
19.52

1400  
~~1638.94~~  
1637.89

-057  
~~29.87~~  
30.52

AC.CORR.PER.SURV.  
T.HOZALSKI

-001  
22.41



**SPLITS/DEEDS PROCESSED**  
LORAIN COUNTY TAX MAP DEPARTMENT  
226 MIDDLE AVE. ELYRIA, OH

SURVEYED BY: TIMOTHY D. HOZALSKI  
 CLOSURE: 1:772,132  
 MAP PAGE(S): 9-00-004  
 APPROVED BY: RRM DATE: 10-28-20  
 SCALE: 1" = 225 PRIOR INSTRUMENT: 20170640795