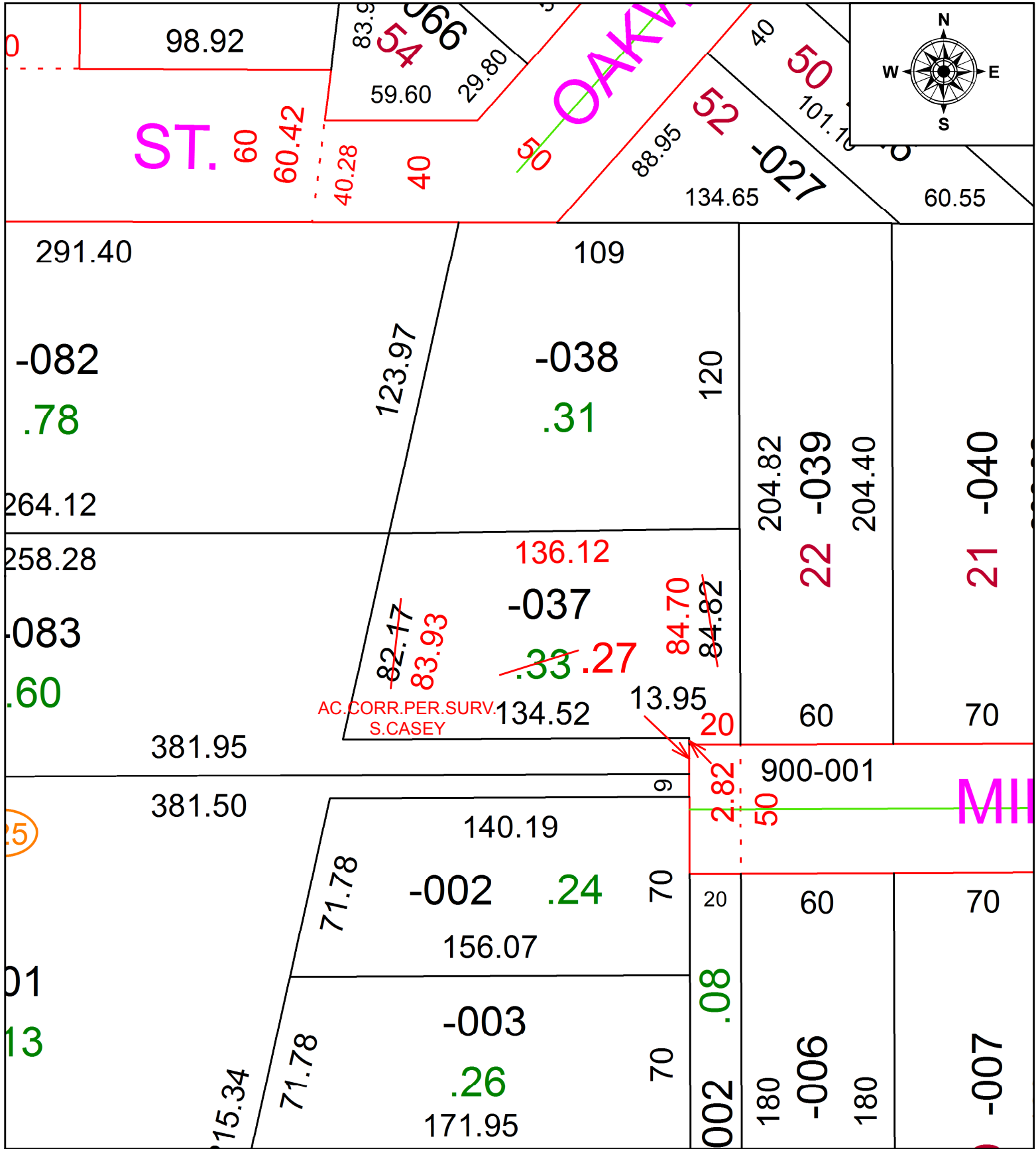


PARENT PARCEL: 10-00-004-124-037

CHILD PARCEL:

STARTING POINT: SOUTHWEST CORNER OF S/L 22 IN THEO CARPENTER SUB.

20-04430-D



SPLITS/DEEDS PROCESSED
 LORAIN COUNTY TAX MAP DEPARTMENT
 226 MIDDLE AVE. ELYRIA, OH

SURVEYED BY: SCOTT J. CASEY
 CLOSURE: 1:55,133
 MAP PAGE(S): 10-00-004
 APPROVED BY: RRM DATE: 10-26-20
 SCALE: 1" = 50' PRIOR INSTRUMENT: 20170650088