

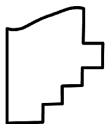
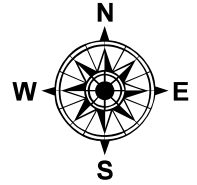
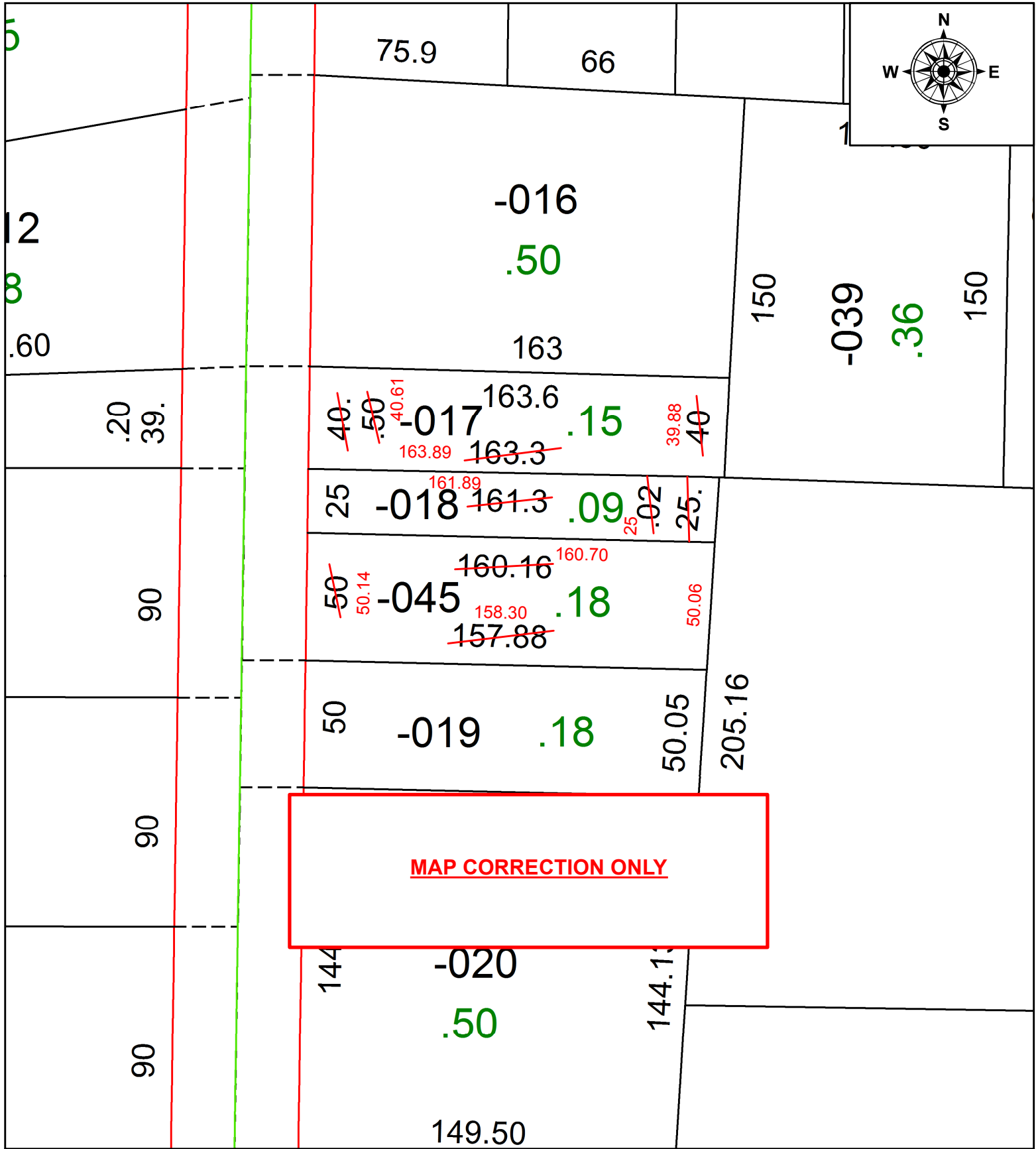
PARENT PARCEL: 13-11-016-109-017, -018, -045

CHILD PARCEL:

STARTING POINT:

SOUTHWEST CORNER OF S/L 11 IN R. HARDY'S ADDITION

20-04429-C



**SPLITS/DEEDS PROCESSED**  
 LORAIN COUNTY TAX MAP DEPARTMENT  
 226 MIDDLE AVE. ELYRIA, OH

SURVEYED BY: BETH A. PEARSON  
 CLOSURE: 1:82,292  
 MAP PAGE(S): 13-11-016  
 APPROVED BY: RRM DATE: 10-26-20  
 SCALE: 1" = 50 PRIOR INSTRUMENT: 20150552428