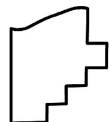
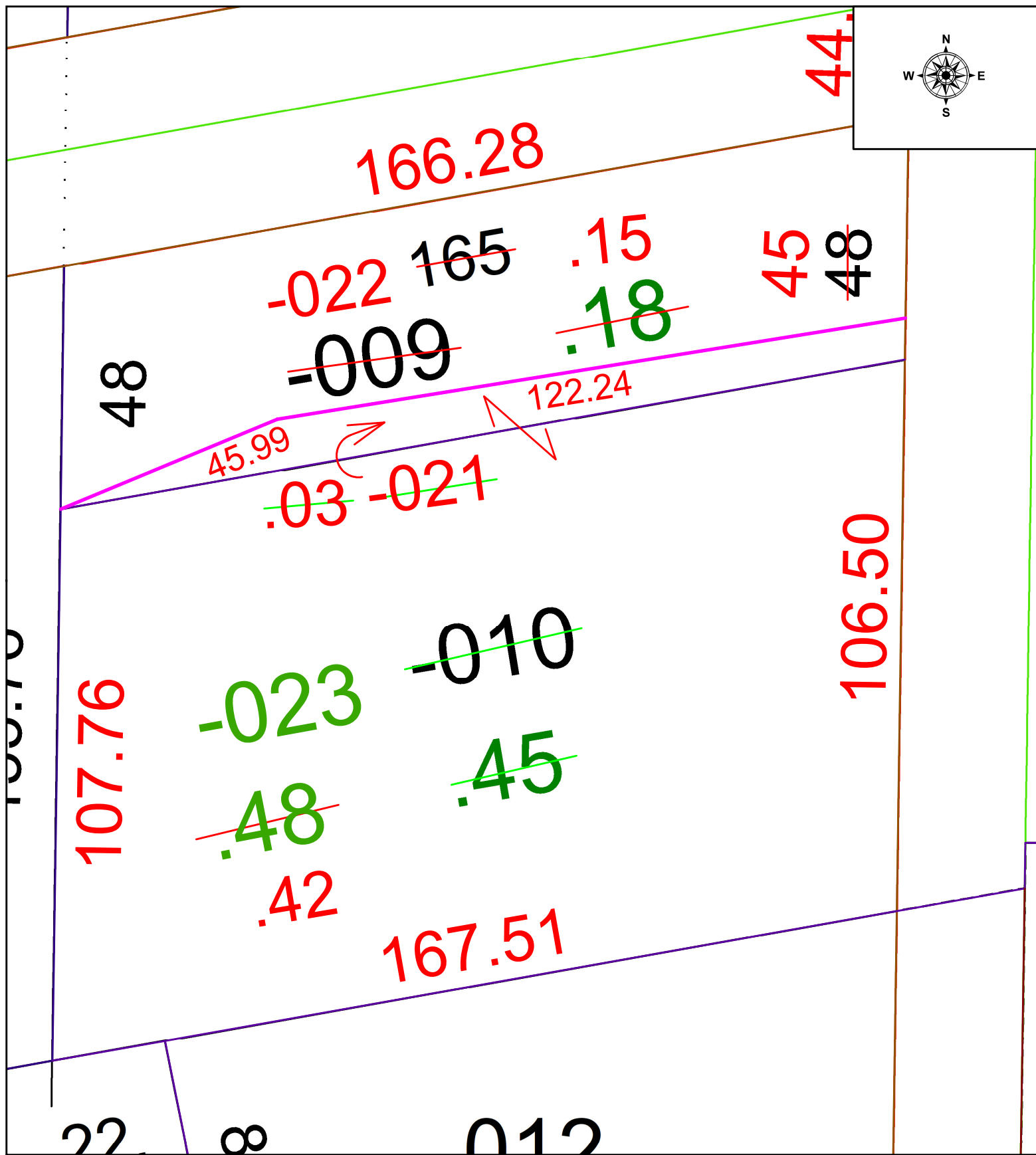
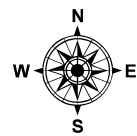


PARENT PARCEL: 13-11-016-105-009 & -010

CHILD PARCEL: 13-11-016-105-021 THRU -023 **ACREAGE CORRECTION PER THOMAS SIMON**

STARTING POINT: **SOUTHEASTERLY CORNER OF S/L 11 IN JAMES H. ROSA'S ADDITION**

22-04426



SPLITS/DEEDS PROCESSED
 LORAIN COUNTY TAX MAP DEPARTMENT
 226 MIDDLE AVE. ELYRIA, OH

SURVEYED BY: THOMAS SIMON
 CLOSURE: 1:59398
 MAP PAGE(S): 13-11-016
 APPROVED BY: WRZ DATE: 1/3/2022
 SCALE: 1" = 25' PRIOR INSTRUMENT: O.R. VOL 836 PG. 286