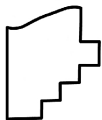
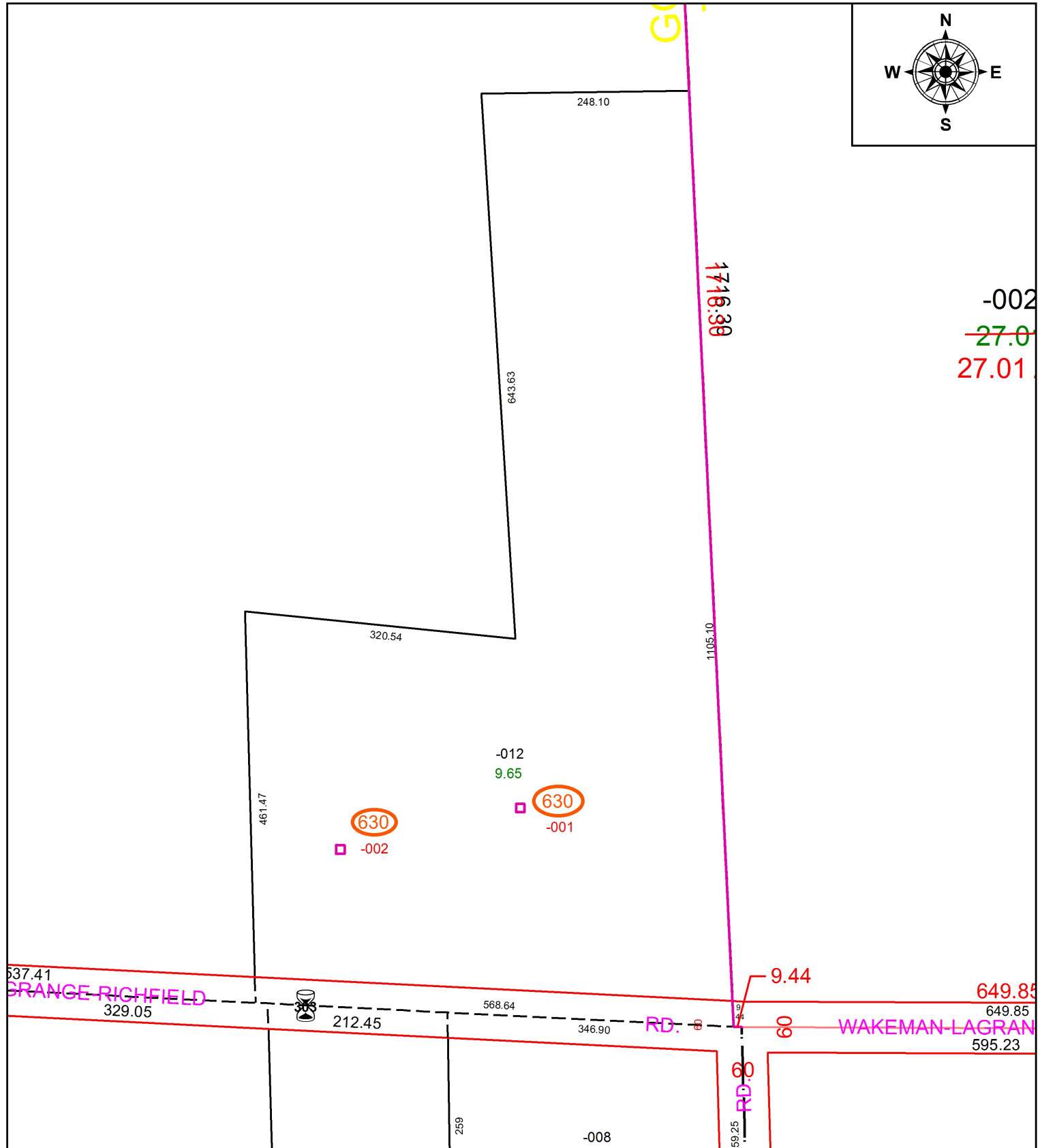
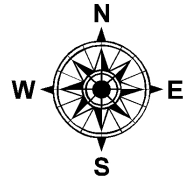


PARENT PARCEL: ADD TO DUPLICATE

CHILD PARCEL: 13-20-021-630-002 GAS WELL API.# 34093605230000

STARTING POINT: X=2012867 Y=572590

20-04423-G



SPLITS/DEEDS PROCESSED
 LORAIN COUNTY TAX MAP DEPARTMENT
 226 MIDDLE AVE. ELYRIA, OH

SURVEYED BY: NA
 CLOSURE: NA
 MAP PAGE(S): 13-20-021
 APPROVED BY: TJS DATE: 10/16/2020
 SCALE: 1" = 150' PRIOR INSTRUMENT: DV XXXX/XXXX