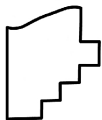
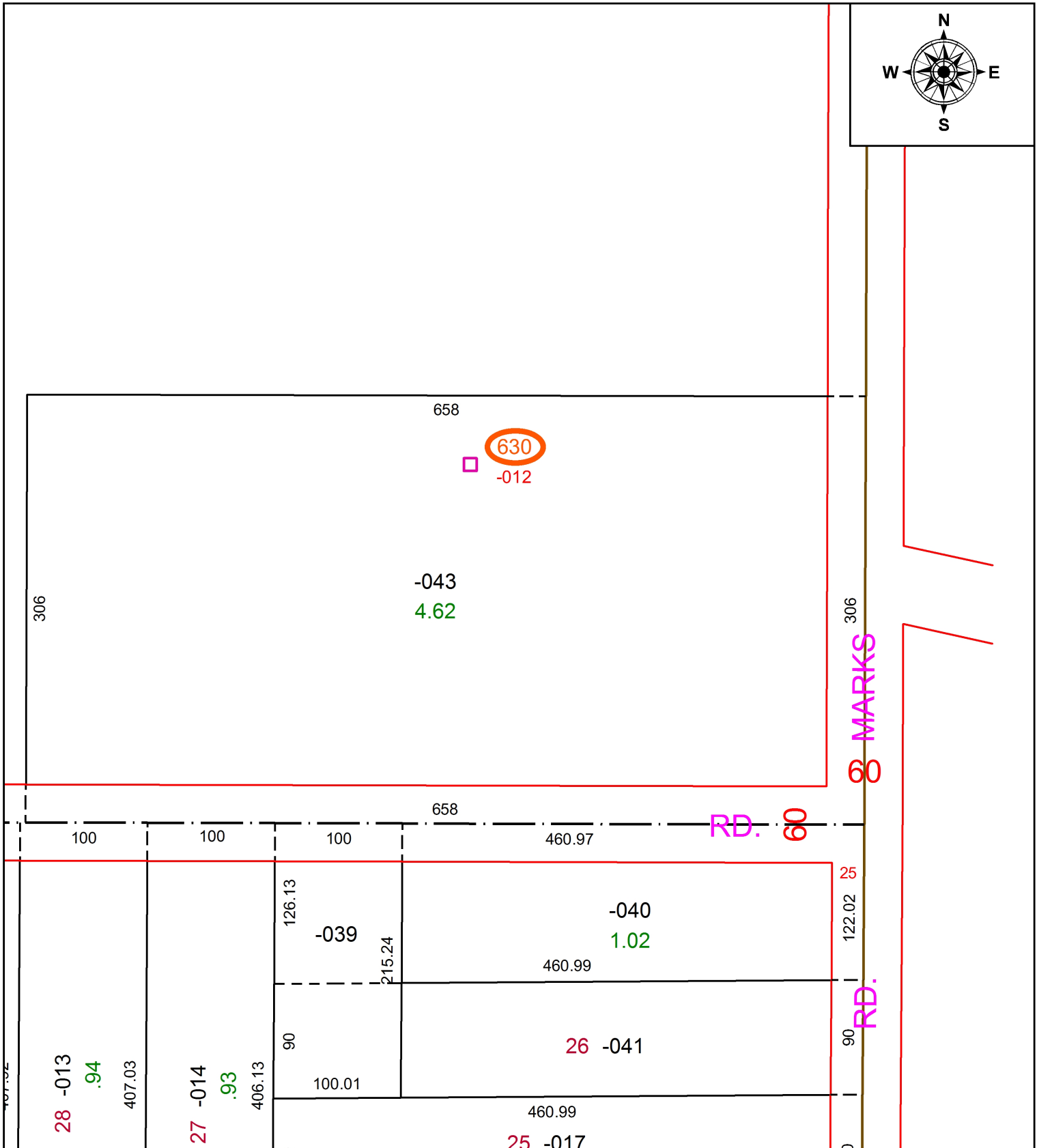
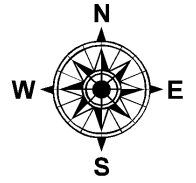


PARENT PARCEL: ADD TO DUPLICATE

CHILD PARCEL: 12-00-001-630-012 GAS WELL API.# 34093212310000

STARTING POINT: X=2139234 Y=611629

20-04417-A



SPLITS/DEEDS PROCESSED
 LORAIN COUNTY TAX MAP DEPARTMENT
 226 MIDDLE AVE. ELYRIA, OH

SURVEYED BY: NA
 CLOSURE: NA
 MAP PAGE(S): 12-00-001
 APPROVED BY: TJS DATE: 10/16/2020
 SCALE: 1" = 100' PRIOR INSTRUMENT: DV XXXX/XXXX