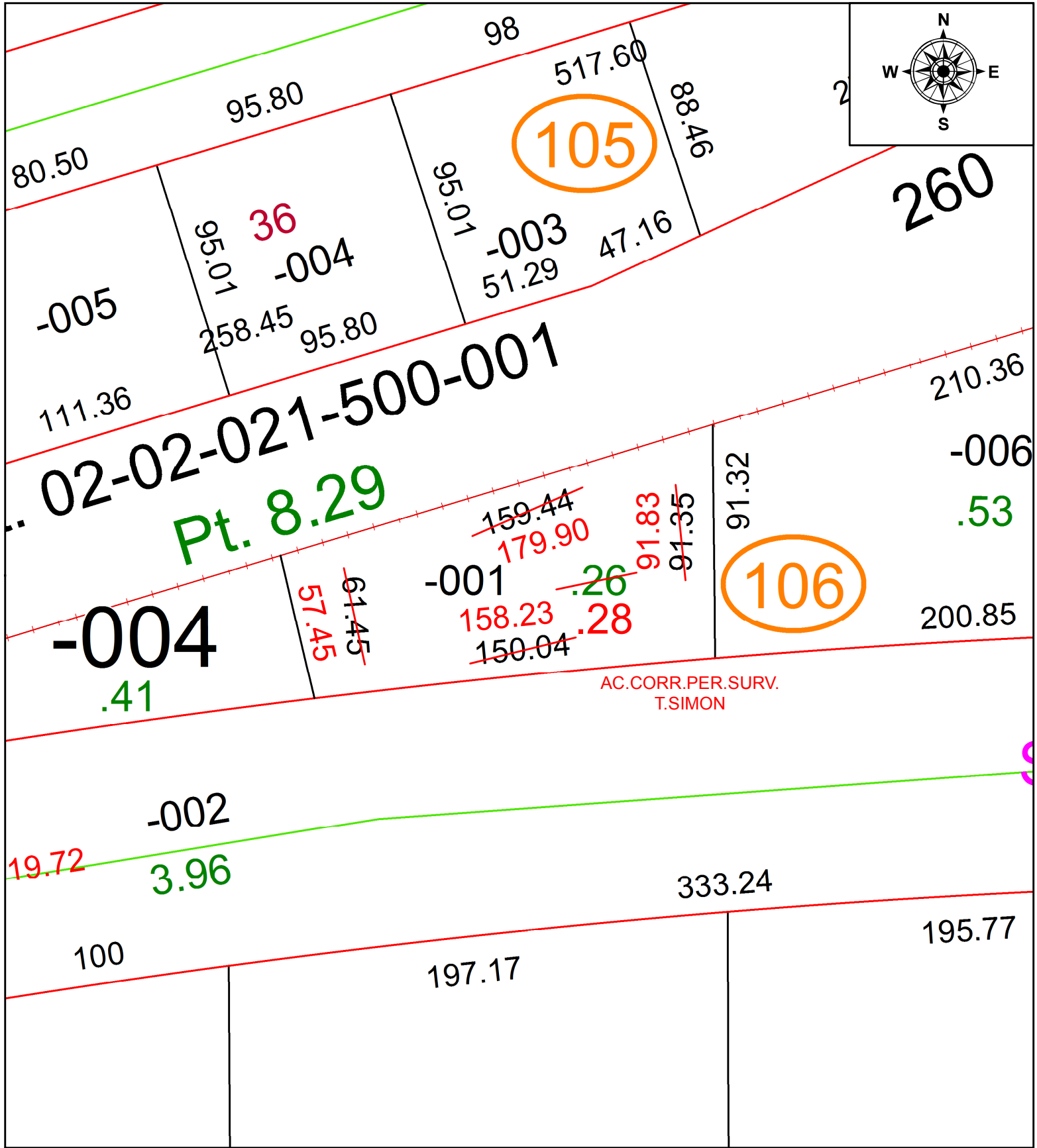


PARENT PARCEL: 02-02-022-106-001

CHILD PARCEL:

STARTING POINT: INTERSECTION OF C/L OF LEAVITT RD. AND C/L OF W.21ST ST.

20-04415-A



AC. CORR. PER. SURV.
T. SIMON



SPLITS/DEEDS PROCESSED
LORAIN COUNTY TAX MAP DEPARTMENT
226 MIDDLE AVE. ELYRIA, OH

SURVEYED BY:	THOMAS A. SIMON
CLOSURE:	1:52,697
MAP PAGE(S):	2-02-022
APPROVED BY:	RRM DATE: 10-16-20
SCALE:	1" = 50
PRIOR INSTRUMENT:	20180687370