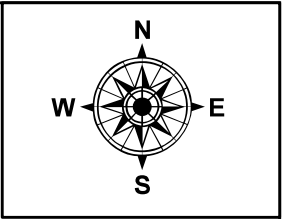
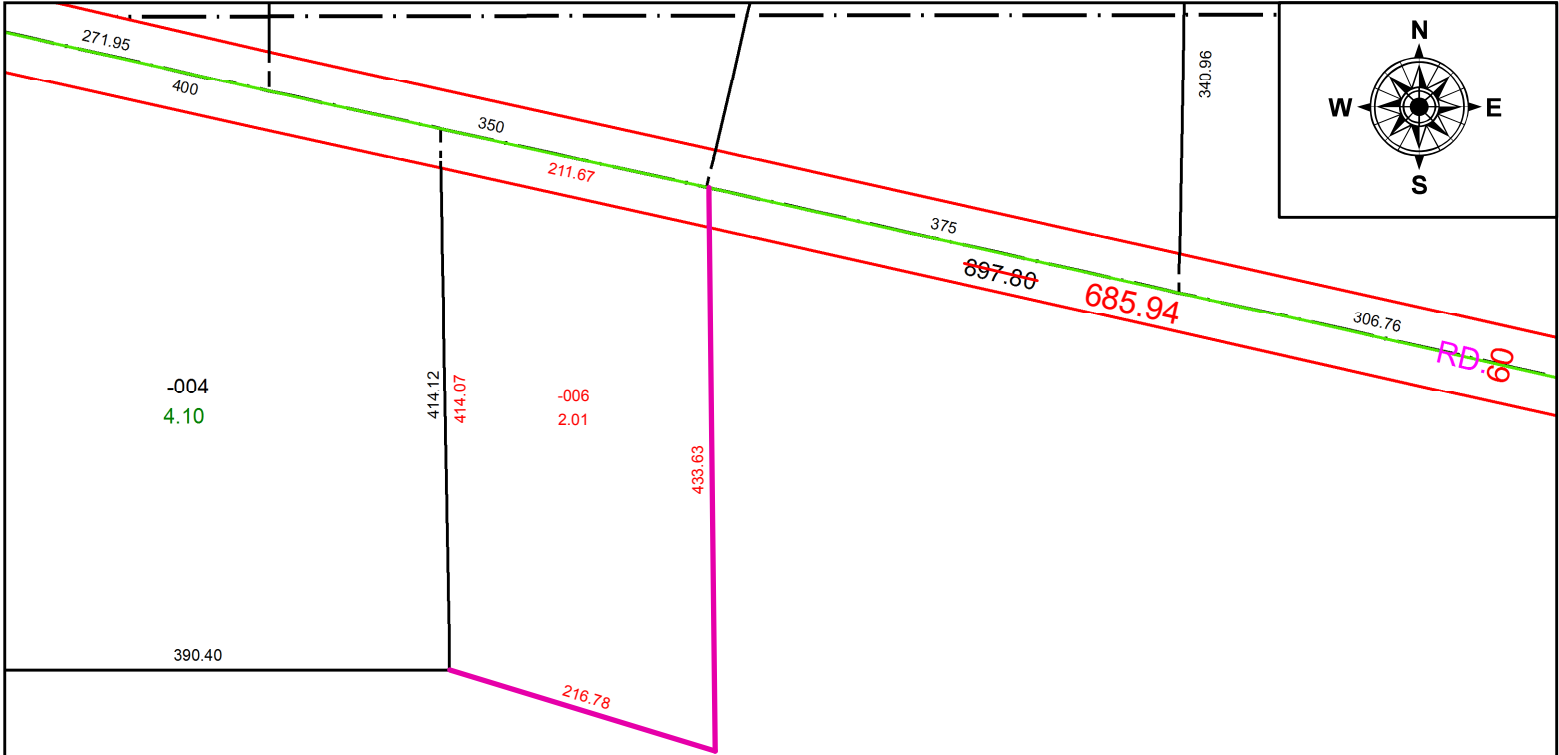


PARENT PARCEL: 08-14-015-000-005

CHILD PARCEL: 08-14-015-000-006, -007

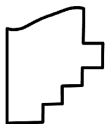
STARTING POINT: C/L OF GARFIELD RD AND EAST LINE OF O/L 15

21-04414



TRACT 14

~~-005~~
 57.40
~~-007~~
 55.39



SPLITS/DEEDS PROCESSED
 LORAIN COUNTY TAX MAP DEPARTMENT
 226 MIDDLE AVE. ELYRIA, OH

SURVEYED BY: TIMOTHY D. HOZALSKI
 CLOSURE: 1: 184381
 MAP PAGE(S): 08-14-015
 APPROVED BY: AC DATE: 12/2/2021
 SCALE: 1" = 150 PRIOR INSTRUMENT: 2021- 0801183