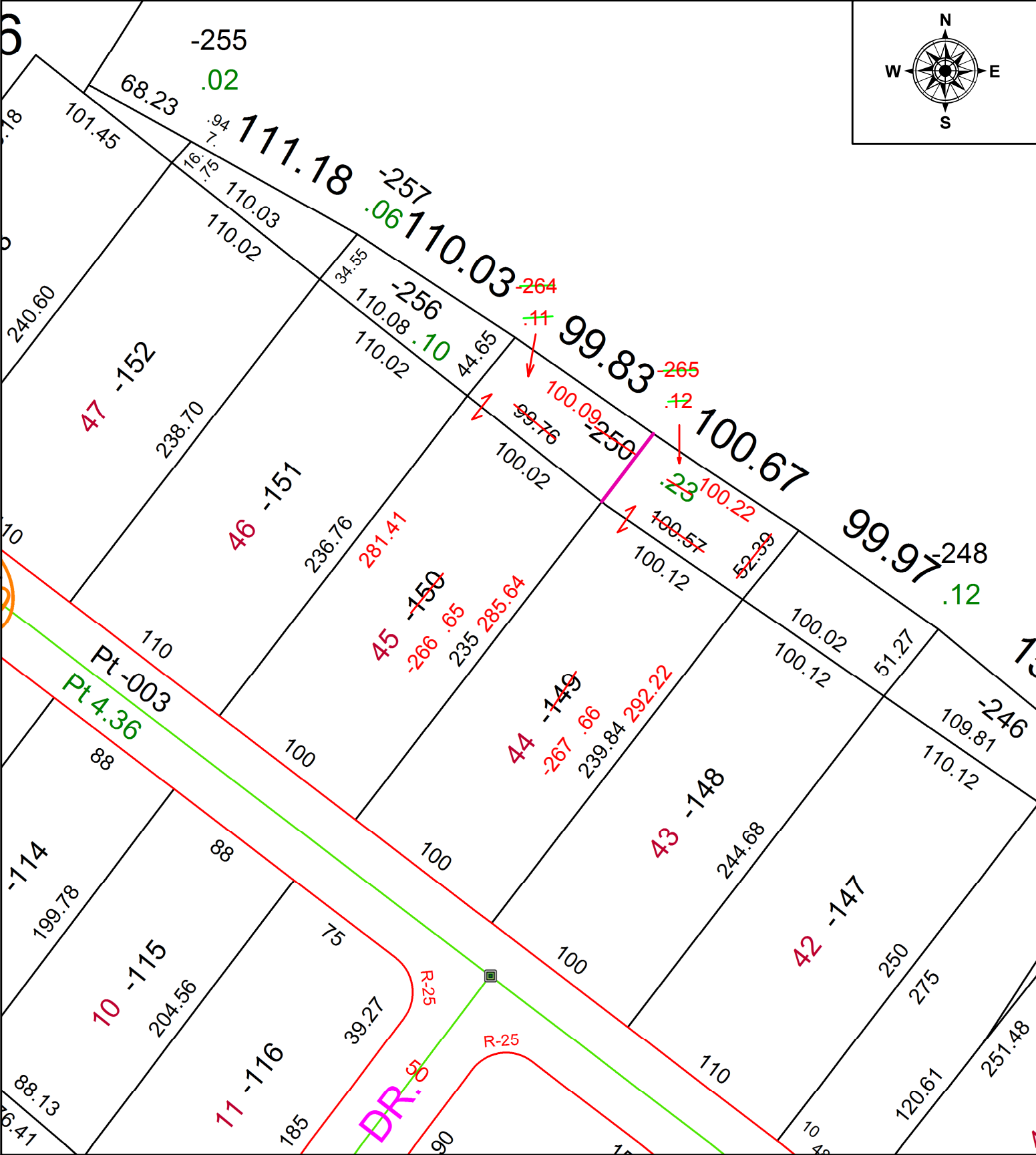
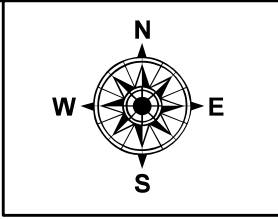


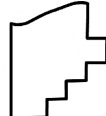
PARENT PARCEL: 01-00-017-000-149, -150, -250

CHILD PARCEL: 01-00-017-000-264 THRU -267

STARTING POINT: SW CORNER OF S/L 45

21-04412



 **SPLITS/DEEDS PROCESSED**  
 LORAIN COUNTY TAX MAP DEPARTMENT  
 226 MIDDLE AVE. ELYRIA, OH

**SURVEYED BY:** THEODORE J. SPILLMAN  
**CLOSURE:** 1: 296576  
**MAP PAGE(S):** 01-00-017-B  
**APPROVED BY:** AC **DATE:** 12/2/2021  
**SCALE:** 1" = 75 **PRIOR INSTRUMENT:** 2019- 0734939