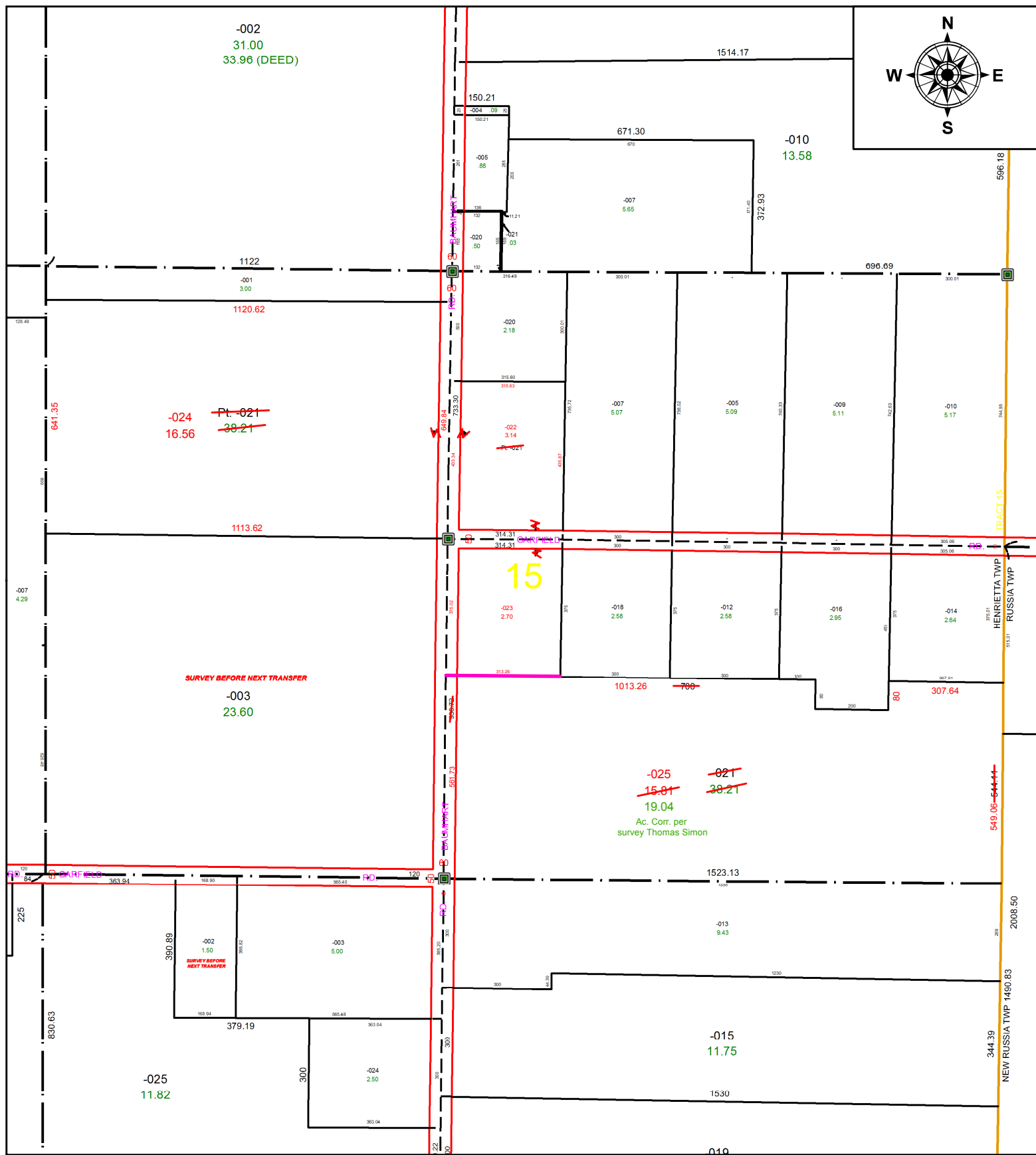


PARENT PARCEL: 08-15-015-000-021
 CHILD PARCEL: 08-15-015-000-022 THRU -025
 STARTING POINT: CL OF BAUMHART RD. & GARFIELD RD.

21-04408



SPLITS/DEEDS PROCESSED
 LORAIN COUNTY TAX MAP DEPARTMENT
 226 MIDDLE AVE. ELYRIA, OH

SURVEYED BY: THOMAS SIMON
 CLOSURE: 1: 191,668
 MAP PAGE(S): 08-15-0105
 APPROVED BY: DMA DATE: 11/12/2021
 SCALE: 1" = 350' PRIOR INSTRUMENT: 20120442417