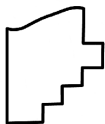
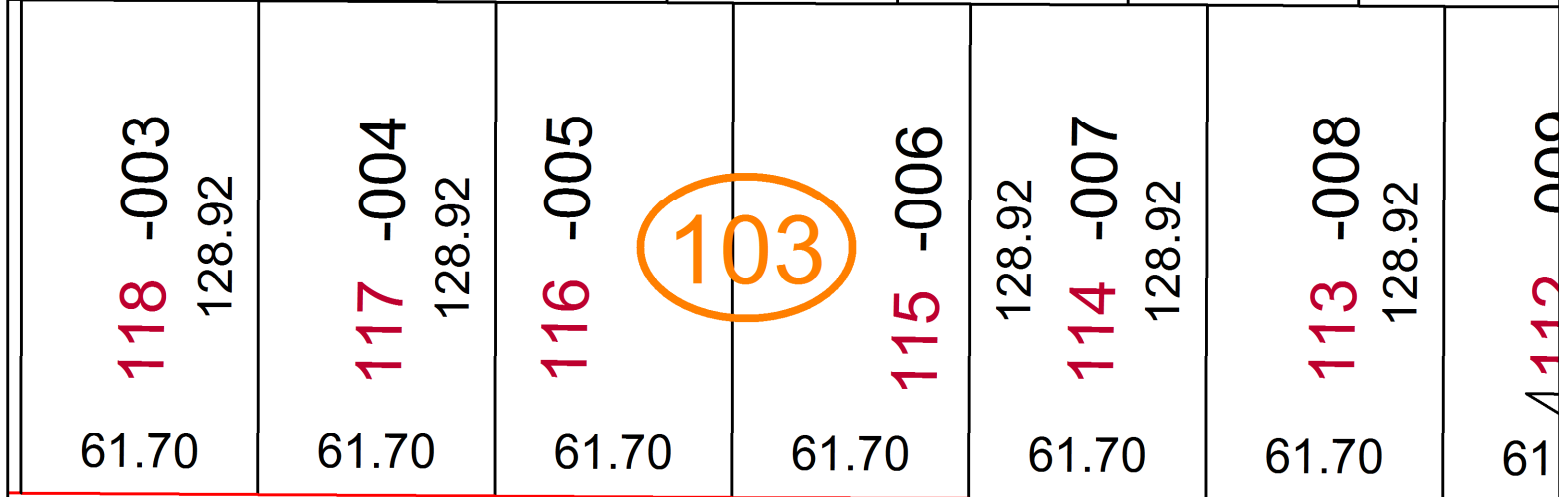
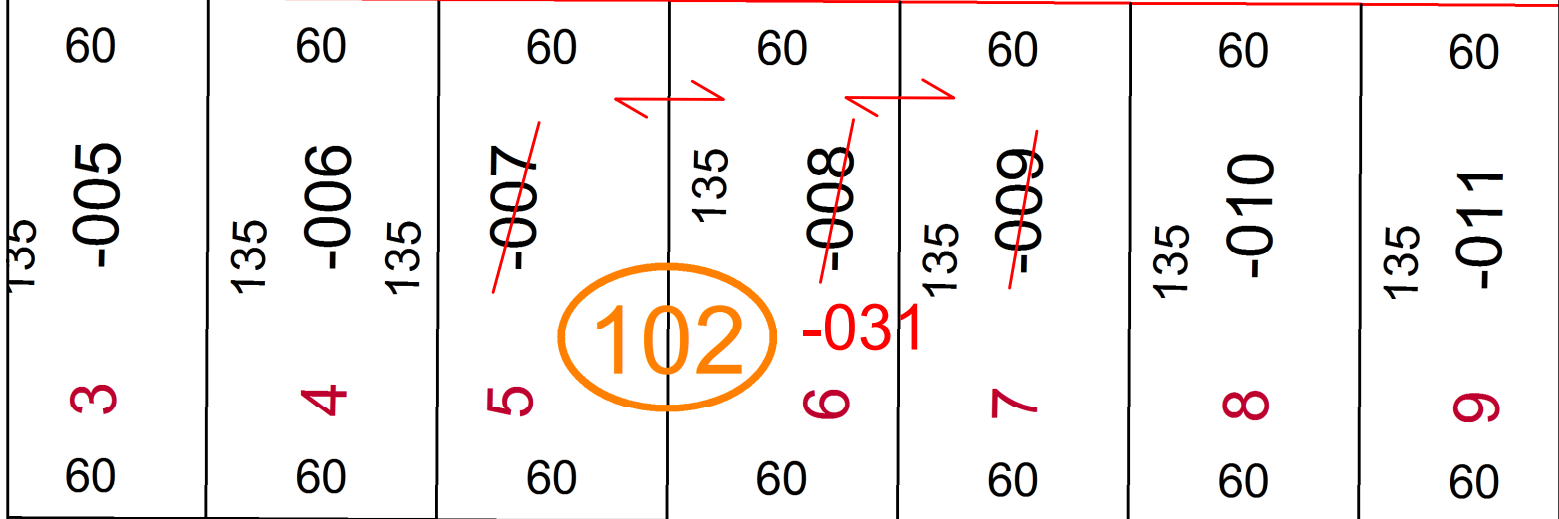
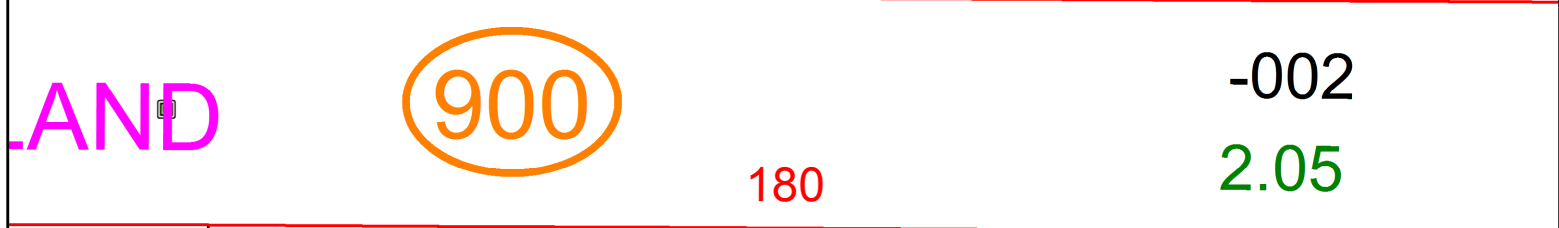
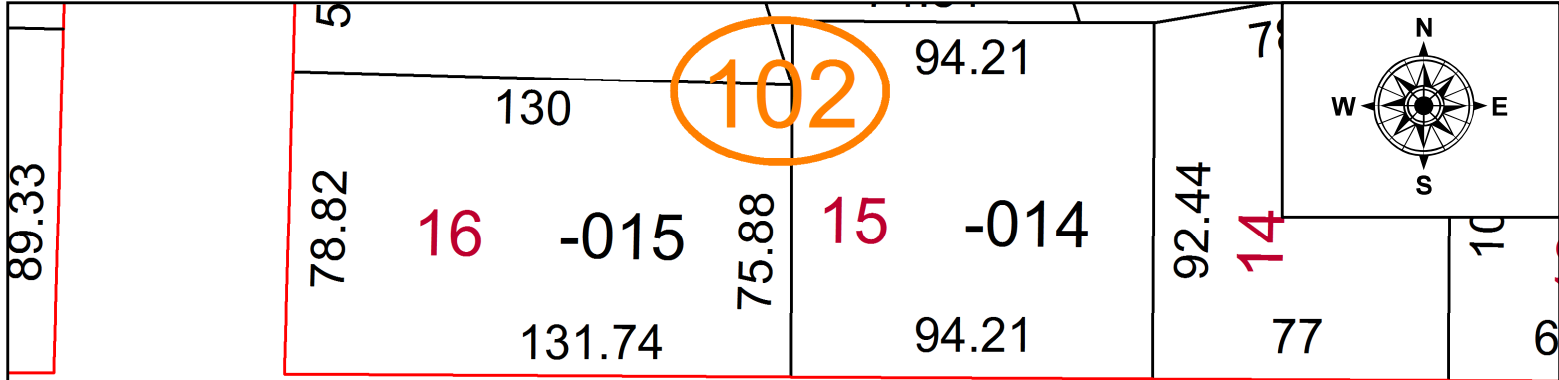


PARENT PARCEL: 06-24-023-102-007, -008, -009

CHILD PARCEL: 06-24-023-102-031

STARTING POINT: XXXXXXXXXXXX

21-04404



SPLITS/DEEDS PROCESSED
LORAIN COUNTY TAX MAP DEPARTMENT
226 MIDDLE AVE. ELYRIA, OH

SURVEYED BY: XXXXXXXXXXXX
 CLOSURE: XXXXXXXXXXXX
 MAP PAGE(S): 06-24-023
 APPROVED BY: DMA DATE: 11/5/2021
 SCALE: 1" = 50' PRIOR INSTRUMENT: 20210836774