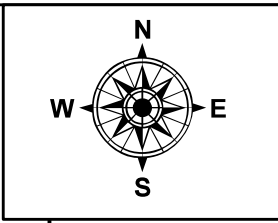
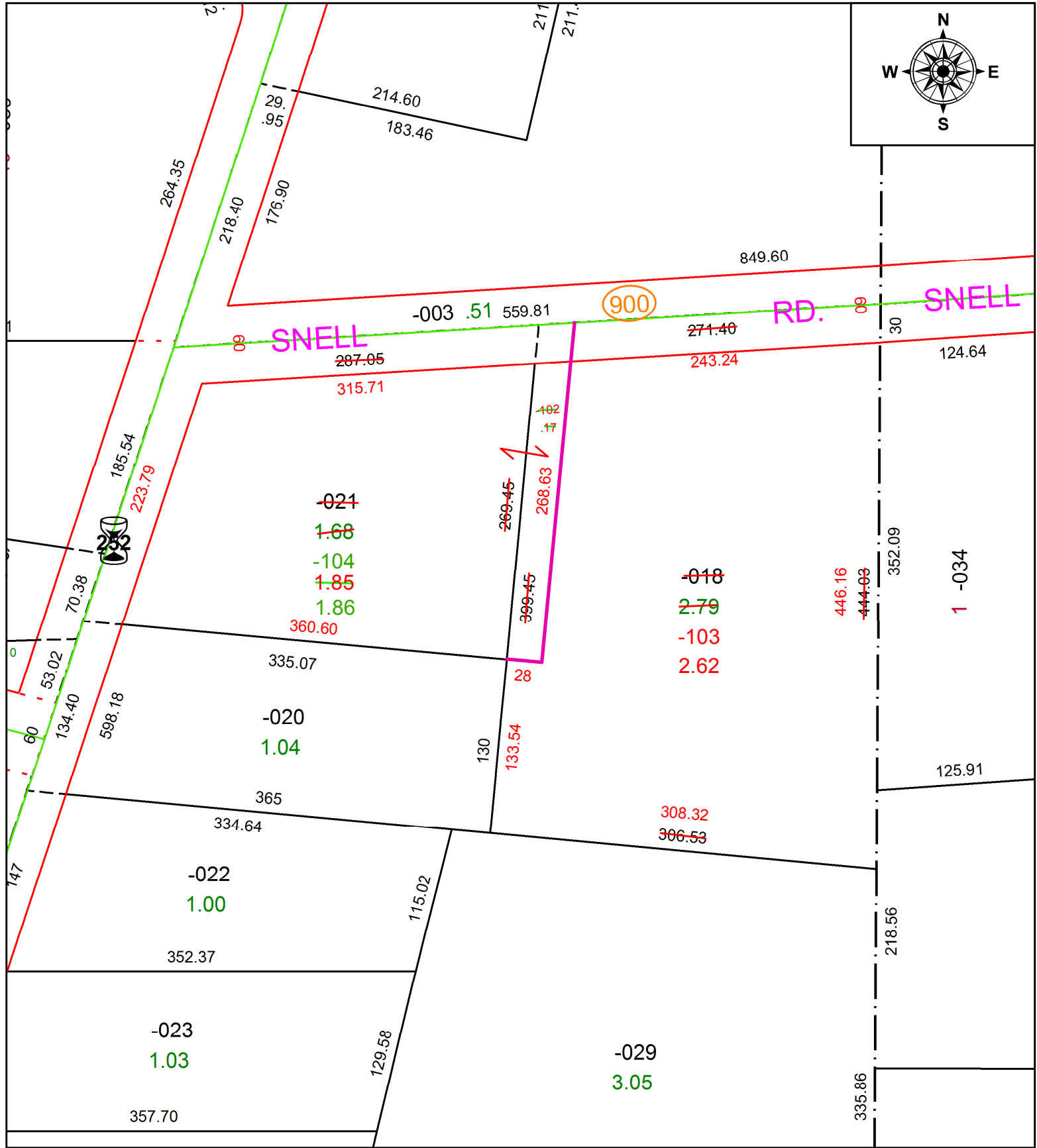


PARENT PARCEL: 12-00-038-000-018, -021

CHILD PARCEL: 12-00-038-000-102 THRU -104

STARTING POINT: C/L OF SR 252 AND SNELL RD **AC CORR PER SURV BY TIMOTHY HOZALSKI**

21-04402



SPLITS/DEEDS PROCESSED
 LORAIN COUNTY TAX MAP DEPARTMENT
 226 MIDDLE AVE. ELYRIA, OH

SURVEYED BY: TIMOTHY D. HOZALSKI
CLOSURE: 1: 161744
MAP PAGE(S): 12-00-038
APPROVED BY: AC **DATE:** 11/5/2021
SCALE: 1" = 100 **PRIOR INSTRUMENT:** 2015- 0570273